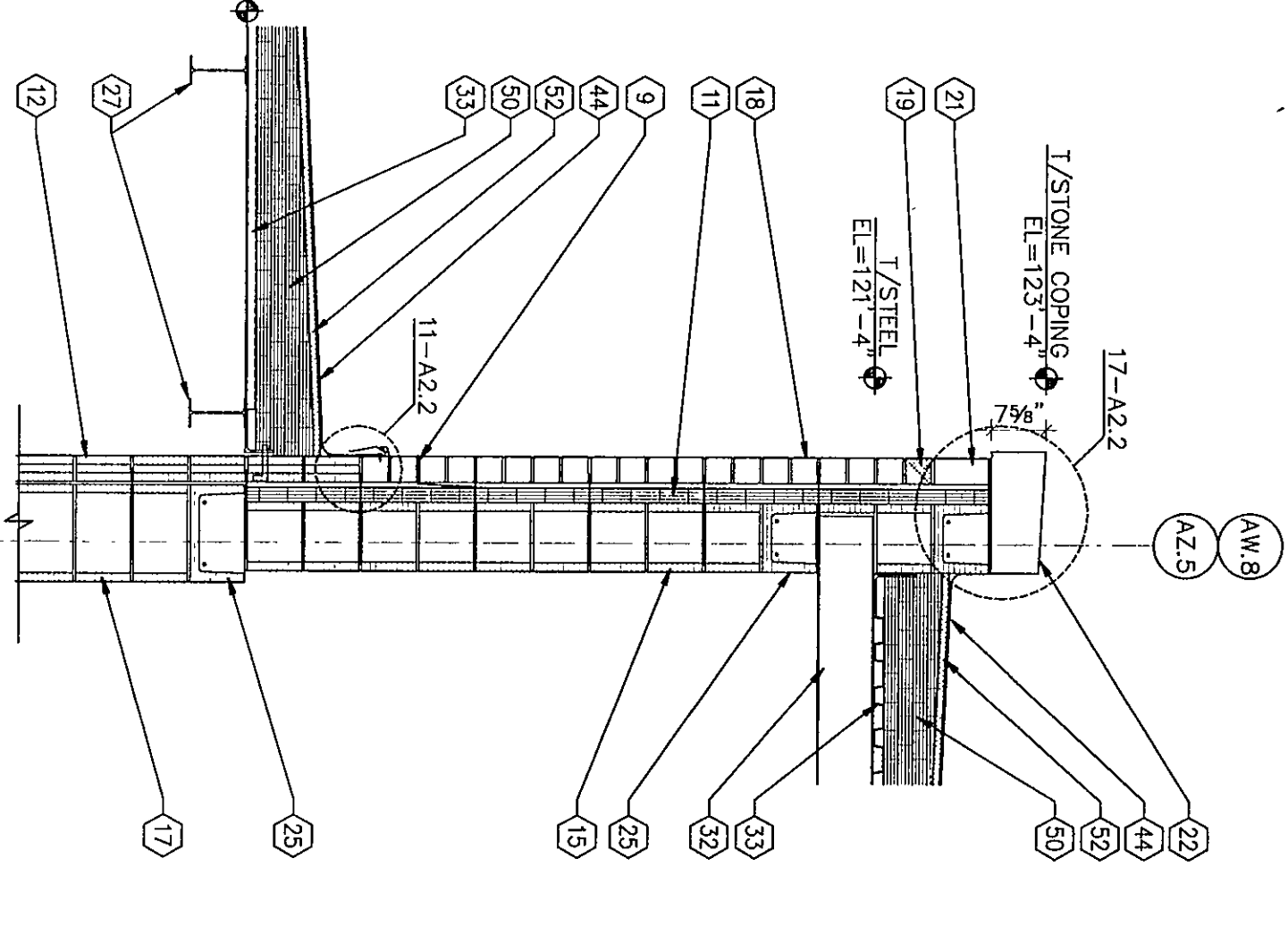
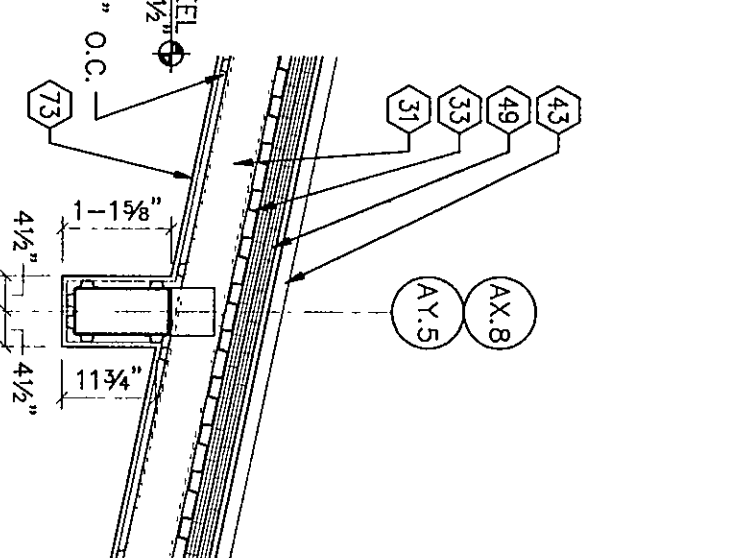


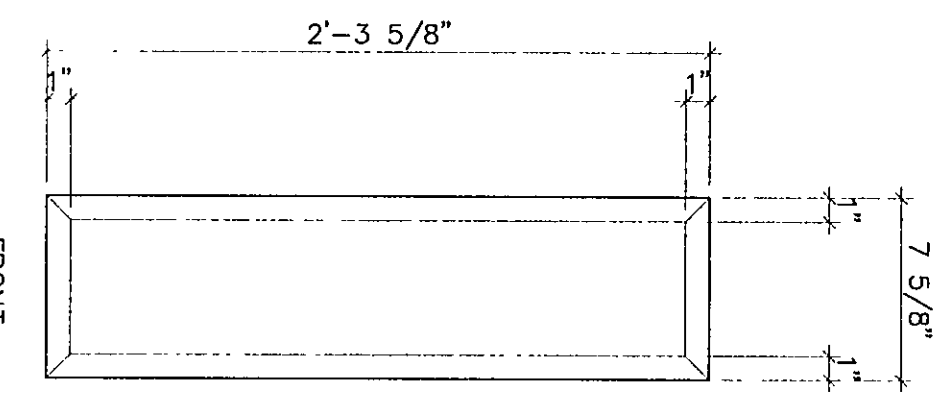
4/CONT WALL SECTION
1/2" = 1'-0"



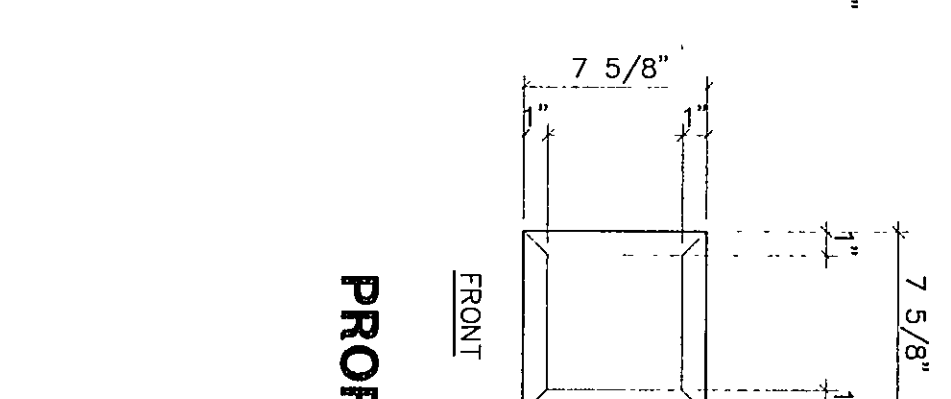
3A WALL SECTION
1/2" = 1'-0"



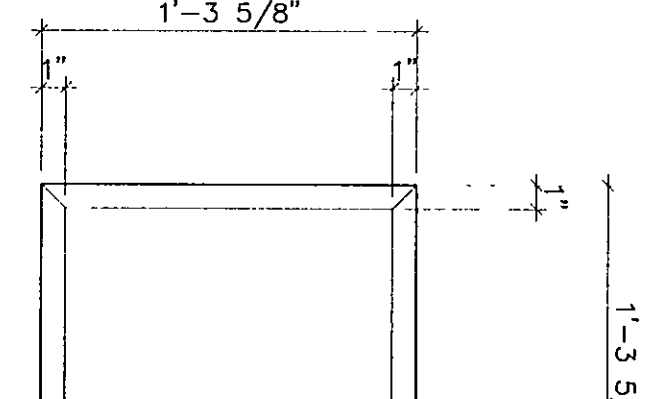
5 DETAIL
1/2" = 1'-0"



PROFILE 'A'



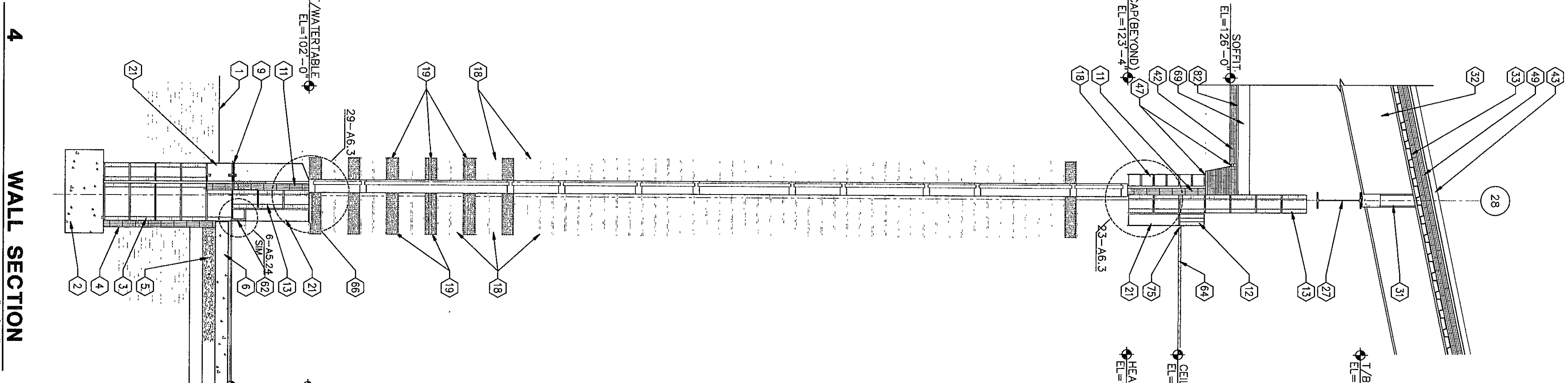
PROFILE 'B'



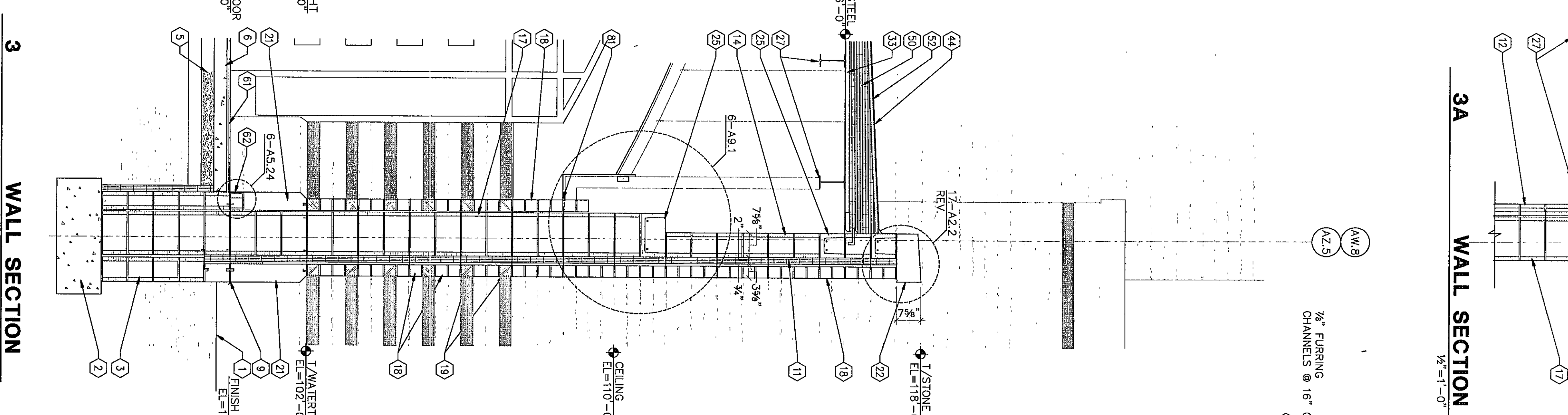
PROFILE 'C'

6 CAST STONE MEDALLION PROFILES
SCALE: 1 1/2" = 1'-0"

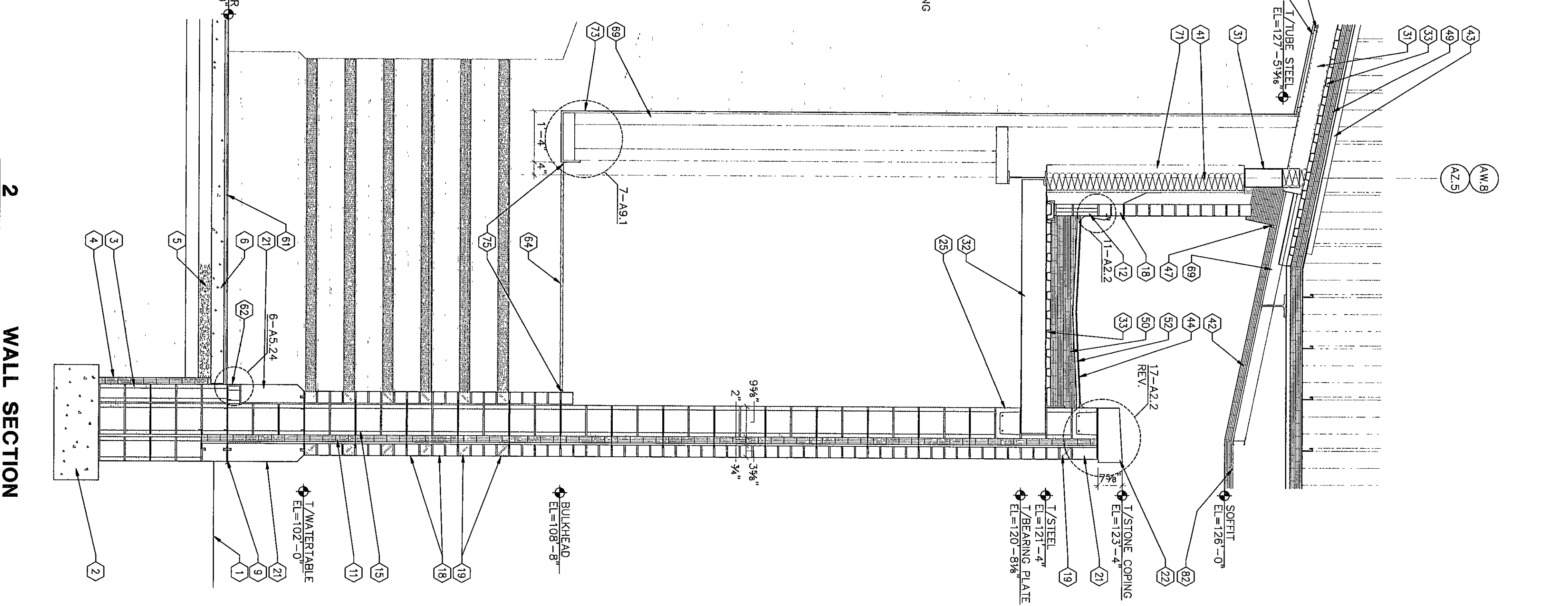
NOTE:
FOR ADDITIONAL MASONRY BOND BEAM
AND MASONRY ANCHOR BOLT
SEE S3.10 S3.19 & S3.10 S3.19



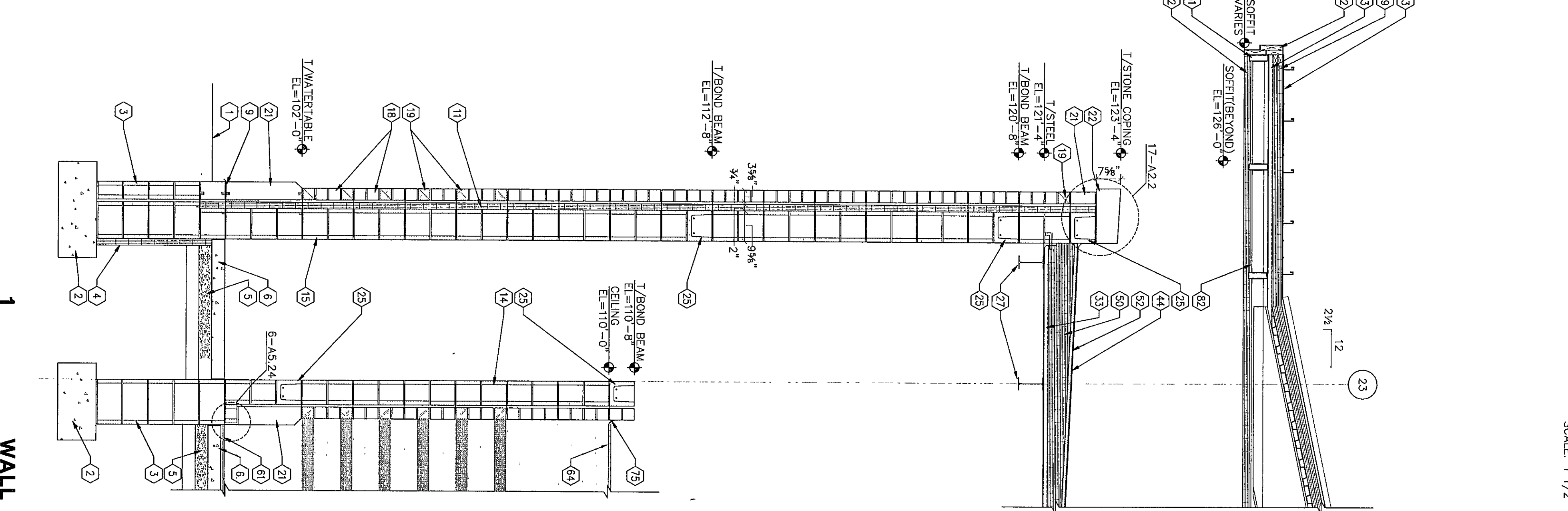
4 WALL SECTION
1/2" = 1'-0"



3 WALL SECTION
1/2" = 1'-0"



2 WALL SECTION
1/2" = 1'-0"



1 WALL SECTION
1/2" = 1'-0"

KEYNOTES

1. FINISH GRADE - REFER TO SITE DRAWINGS
2. CONCRETE FOOTING - REFER TO STRUCTURAL DRAWINGS
3. FOUNDATION WALL - REFER TO STRUCTURAL DRAWINGS
4. 2" FIBERGLASS INSULATION - REFER TO SECTION 03300
5. 4" DRAINAGE TILE OVER VAPOR BARRIER OVER 4" DRAINAGE TILE - REFER TO SECTION 03300
6. CONCRETE CURB - REFER TO SECTION 04200
7. 32" DIA. X 8" ANCHOR BOLT WITH HOOK AT 32" O.C. BY SECTION 04200 - REFER TO SECTION 04200
8. 12" CONCRETE MASONRY UNIT - REFER TO SECTION 04200
9. 12" CONCRETE MASONRY UNIT - REFER TO SECTION 04200
10. 12" CONCRETE MASONRY UNIT - REFER TO SECTION 04200
11. 2" CANTY INSULATION - REFER TO SECTION 04200
12. 12" CONCRETE MASONRY UNIT - REFER TO SECTION 04200
13. 12" CONCRETE MASONRY UNIT - REFER TO SECTION 04200
14. 12" CONCRETE MASONRY UNIT - REFER TO SECTION 04200
15. 12" CONCRETE MASONRY UNIT - REFER TO SECTION 04200
16. 12" CONCRETE MASONRY UNIT - REFER TO SECTION 04200
17. 12" CONCRETE MASONRY UNIT - REFER TO SECTION 04200
18. 12" CONCRETE MASONRY UNIT - REFER TO SECTION 04200
19. 12" CONCRETE MASONRY UNIT - REFER TO SECTION 04200
20. 12" CONCRETE MASONRY UNIT - REFER TO SECTION 04200
21. 12" CONCRETE MASONRY UNIT - REFER TO SECTION 04200
22. 12" CONCRETE MASONRY UNIT - REFER TO SECTION 04200
23. 12" CONCRETE MASONRY UNIT - REFER TO SECTION 04200
24. 12" CONCRETE MASONRY UNIT - REFER TO SECTION 04200
25. 12" CONCRETE MASONRY UNIT - REFER TO SECTION 04200
26. 12" CONCRETE MASONRY UNIT - REFER TO SECTION 04200
27. 12" CONCRETE MASONRY UNIT - REFER TO SECTION 04200
28. 12" CONCRETE MASONRY UNIT - REFER TO SECTION 04200
29. 12" CONCRETE MASONRY UNIT - REFER TO SECTION 04200
30. 12" CONCRETE MASONRY UNIT - REFER TO SECTION 04200
31. 12" CONCRETE MASONRY UNIT - REFER TO SECTION 04200
32. 12" CONCRETE MASONRY UNIT - REFER TO SECTION 04200
33. 12" CONCRETE MASONRY UNIT - REFER TO SECTION 04200
34. 12" CONCRETE MASONRY UNIT - REFER TO SECTION 04200
35. 12" CONCRETE MASONRY UNIT - REFER TO SECTION 04200
36. 12" CONCRETE MASONRY UNIT - REFER TO SECTION 04200
37. 12" CONCRETE MASONRY UNIT - REFER TO SECTION 04200
38. 12" CONCRETE MASONRY UNIT - REFER TO SECTION 04200
39. 12" CONCRETE MASONRY UNIT - REFER TO SECTION 04200
40. 12" CONCRETE MASONRY UNIT - REFER TO SECTION 04200
41. 12" CONCRETE MASONRY UNIT - REFER TO SECTION 04200
42. 12" CONCRETE MASONRY UNIT - REFER TO SECTION 04200
43. 12" CONCRETE MASONRY UNIT - REFER TO SECTION 04200
44. 12" CONCRETE MASONRY UNIT - REFER TO SECTION 04200
45. 12" CONCRETE MASONRY UNIT - REFER TO SECTION 04200
46. 12" CONCRETE MASONRY UNIT - REFER TO SECTION 04200
47. 12" CONCRETE MASONRY UNIT - REFER TO SECTION 04200
48. 12" CONCRETE MASONRY UNIT - REFER TO SECTION 04200
49. 12" CONCRETE MASONRY UNIT - REFER TO SECTION 04200
50. 12" CONCRETE MASONRY UNIT - REFER TO SECTION 04200
51. 12" CONCRETE MASONRY UNIT - REFER TO SECTION 04200
52. 12" CONCRETE MASONRY UNIT - REFER TO SECTION 04200
53. 12" CONCRETE MASONRY UNIT - REFER TO SECTION 04200
54. 12" CONCRETE MASONRY UNIT - REFER TO SECTION 04200
55. 12" CONCRETE MASONRY UNIT - REFER TO SECTION 04200
56. 12" CONCRETE MASONRY UNIT - REFER TO SECTION 04200
57. 12" CONCRETE MASONRY UNIT - REFER TO SECTION 04200
58. 12" CONCRETE MASONRY UNIT - REFER TO SECTION 04200
59. 12" CONCRETE MASONRY UNIT - REFER TO SECTION 04200
60. 12" CONCRETE MASONRY UNIT - REFER TO SECTION 04200
61. 12" CONCRETE MASONRY UNIT - REFER TO SECTION 04200
62. 12" CONCRETE MASONRY UNIT - REFER TO SECTION 04200
63. 12" CONCRETE MASONRY UNIT - REFER TO SECTION 04200
64. 12" CONCRETE MASONRY UNIT - REFER TO SECTION 04200
65. 12" CONCRETE MASONRY UNIT - REFER TO SECTION 04200
66. 12" CONCRETE MASONRY UNIT - REFER TO SECTION 04200
67. 12" CONCRETE MASONRY UNIT - REFER TO SECTION 04200
68. 12" CONCRETE MASONRY UNIT - REFER TO SECTION 04200
69. 12" CONCRETE MASONRY UNIT - REFER TO SECTION 04200
70. 12" CONCRETE MASONRY UNIT - REFER TO SECTION 04200
71. 12" CONCRETE MASONRY UNIT - REFER TO SECTION 04200
72. 12" CONCRETE MASONRY UNIT - REFER TO SECTION 04200
73. 12" CONCRETE MASONRY UNIT - REFER TO SECTION 04200
74. 12" CONCRETE MASONRY UNIT - REFER TO SECTION 04200
75. 12" CONCRETE MASONRY UNIT - REFER TO SECTION 04200
76. 12" CONCRETE MASONRY UNIT - REFER TO SECTION 04200
77. 12" CONCRETE MASONRY UNIT - REFER TO SECTION 04200
78. 12" CONCRETE MASONRY UNIT - REFER TO SECTION 04200
79. 12" CONCRETE MASONRY UNIT - REFER TO SECTION 04200
80. 12" CONCRETE MASONRY UNIT - REFER TO SECTION 04200
81. 12" CONCRETE MASONRY UNIT - REFER TO SECTION 04200
82. 12" CONCRETE MASONRY UNIT - REFER TO SECTION 04200

WALL SECTIONS

DRAWN BY: DMR
CHECKED BY: LEC

COMM. NO.: 95067.00
DATE: APRIL 21, 1997

REVISIONS NO. DATE

A5.2

Fanning/Howey
Associates, Inc.
Architects Engineers Consultants

THE NEW
CHESTERTON HIGH SCHOOL
FOR THE
DUNELAND SCHOOL CORPORATION
CHESTERTON, INDIANA

95067.00
CHESTERTON HIGH SCHOOL

95067.00

95067.00