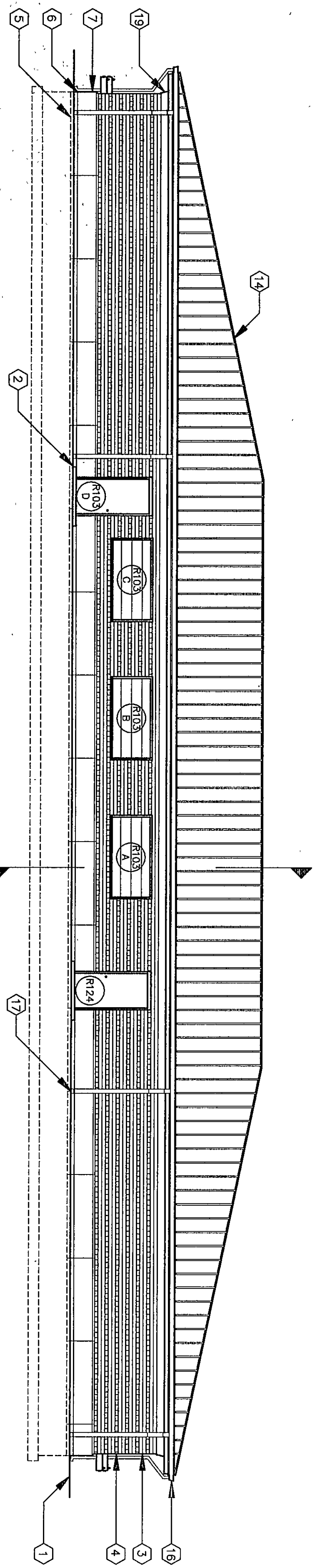
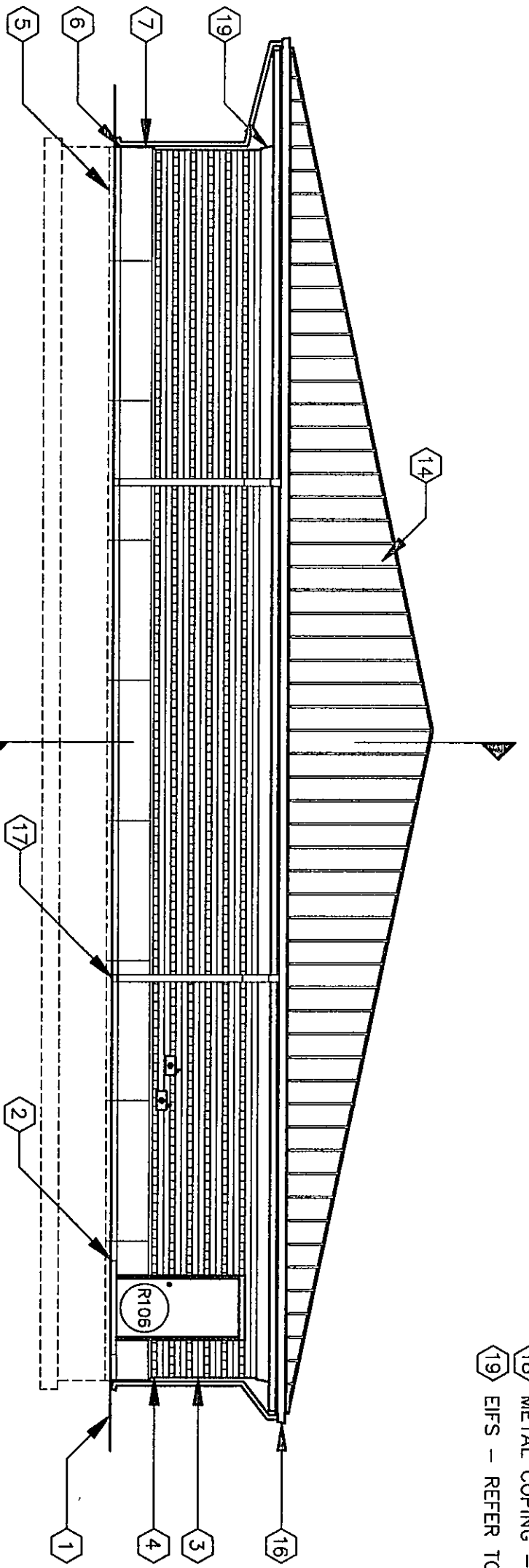


KEYNOTES

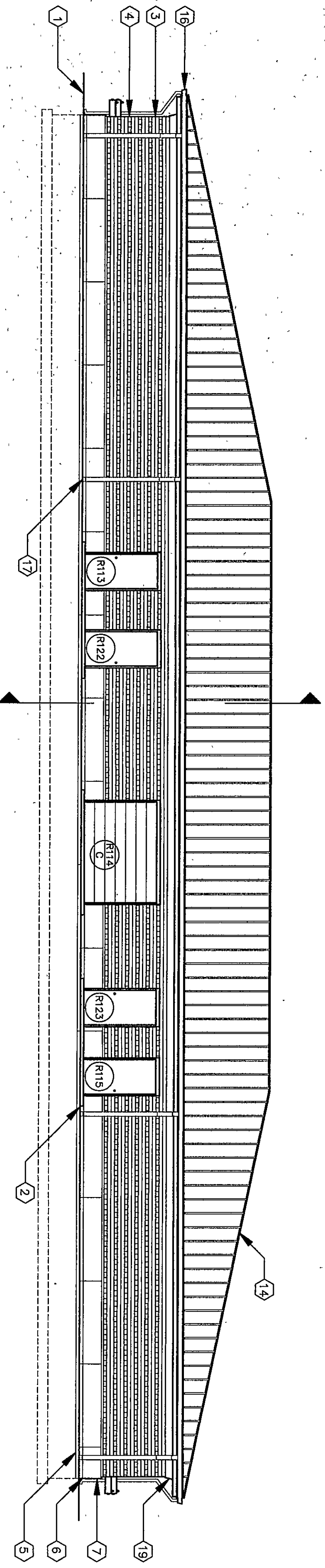
- 1 INDICATES FINISH GRADE - REFER TO SITE DRAWINGS
- 2 CONCRETE STOPS - REFER TO STRUCTURAL DRAWINGS
- 3 INDICATES FACE BRICK - COLOR 'A' - REFER TO SECTION 04200
- 4 INDICATES FACE BRICK - COLOR 'B' - REFER TO SECTION 04200
- 5 CAST STONE LEDE @ 99'-4"
- 6 CAST STONE STARTER COURSE - REFER TO SECTION 04720
- 7 CAST STONE WATER TABLE - REFER TO SECTION 04720
- 8 CAST STONE SILL - REFER TO SECTION 04720
- 9 CAST STONE - REFER TO SECTION 04720
- 10 CAST STONE MEDALLION - REFER TO SECTION 04720
- 11 (SEE 6-A&Z FOR PROFILES)
- 12 CAST STONE CORNER - REFER TO SECTION 04720
- 13 CAST STONE PER CAP - REFER TO SECTION 04720
- 14 PREFORMED METAL ROOFING - REFER TO SECTION 07412
- 15 METAL FASCIA AND GRAVEL STOP - REFER TO SECTION 07412
- 16 METAL GUTTER - REFER TO SECTION 07412
- 17 METAL DOWNSPOUT - REFER TO SECTION 07412
- 18 METAL CORNER - REFER TO SECTION 07412
- 19 EIFS - REFER TO SECTION 07240



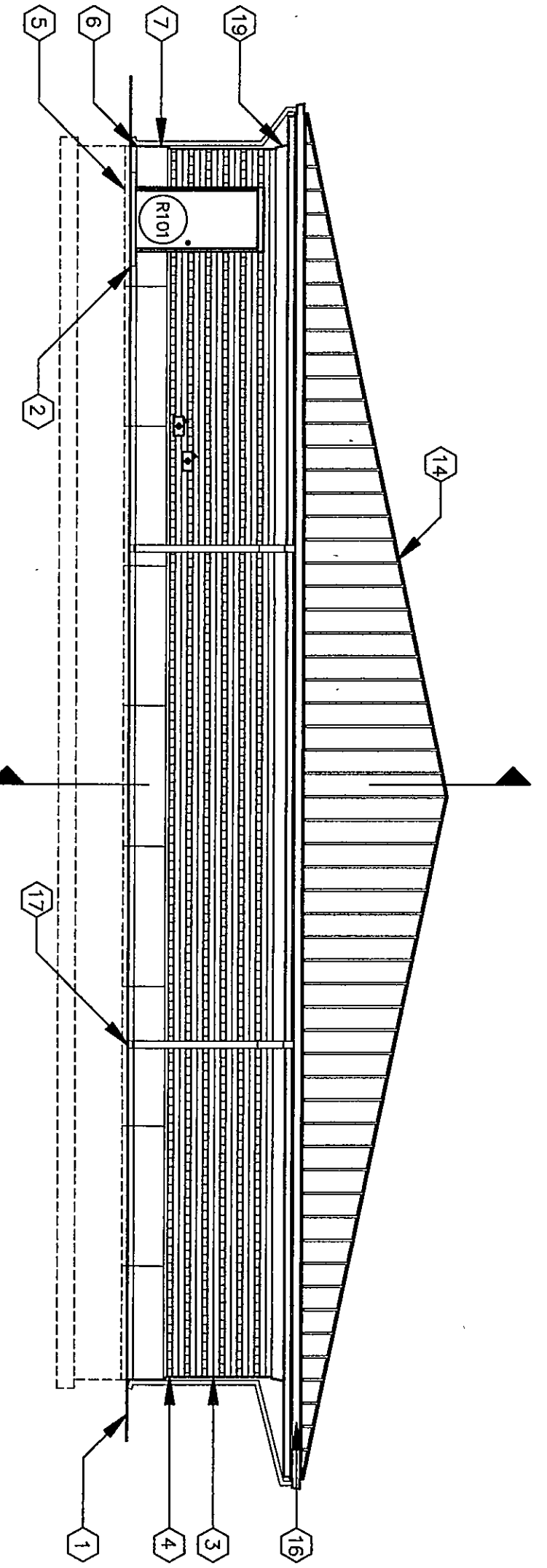
1 EAST ELEVATION  
UNIT: R'  
SCALE: 1/8"=1'-0"



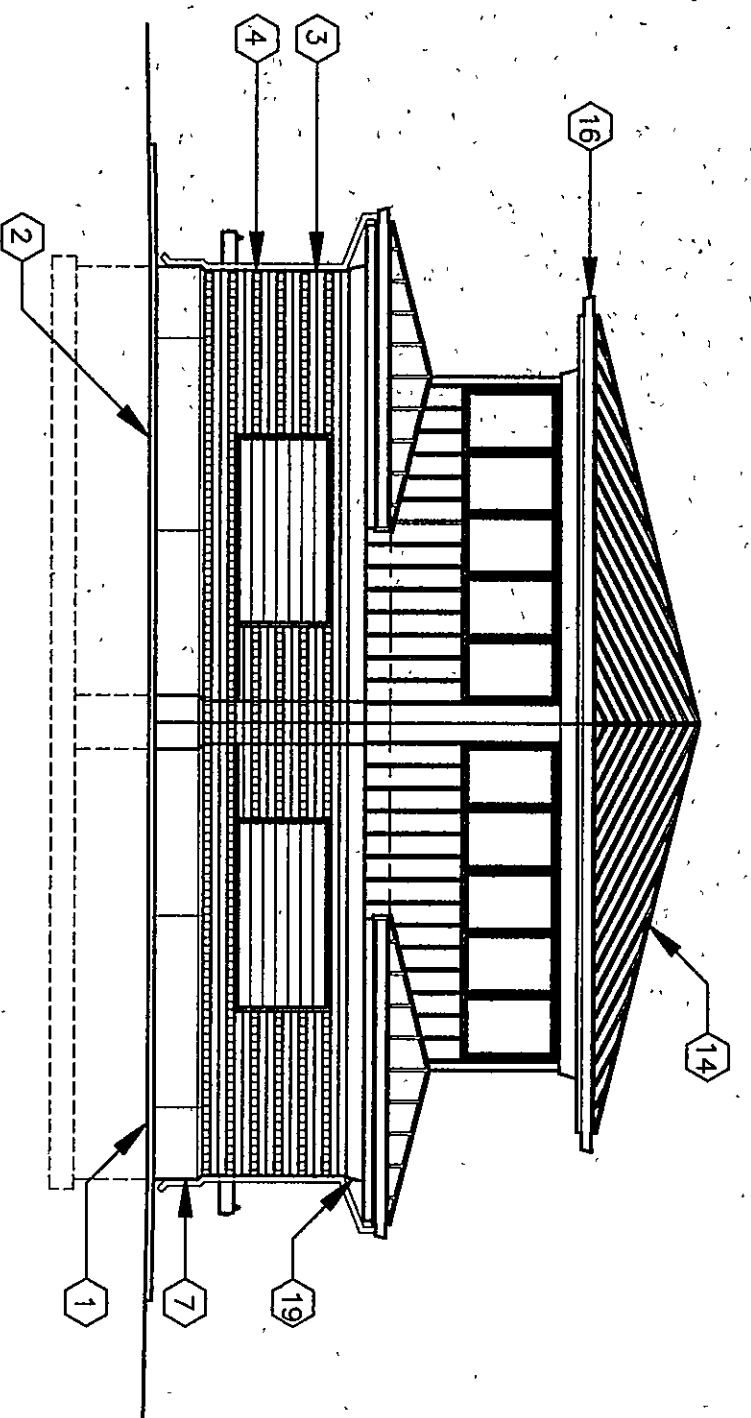
3 SOUTH ELEVATION  
UNIT: R'  
SCALE: 1/8"=1'-0"



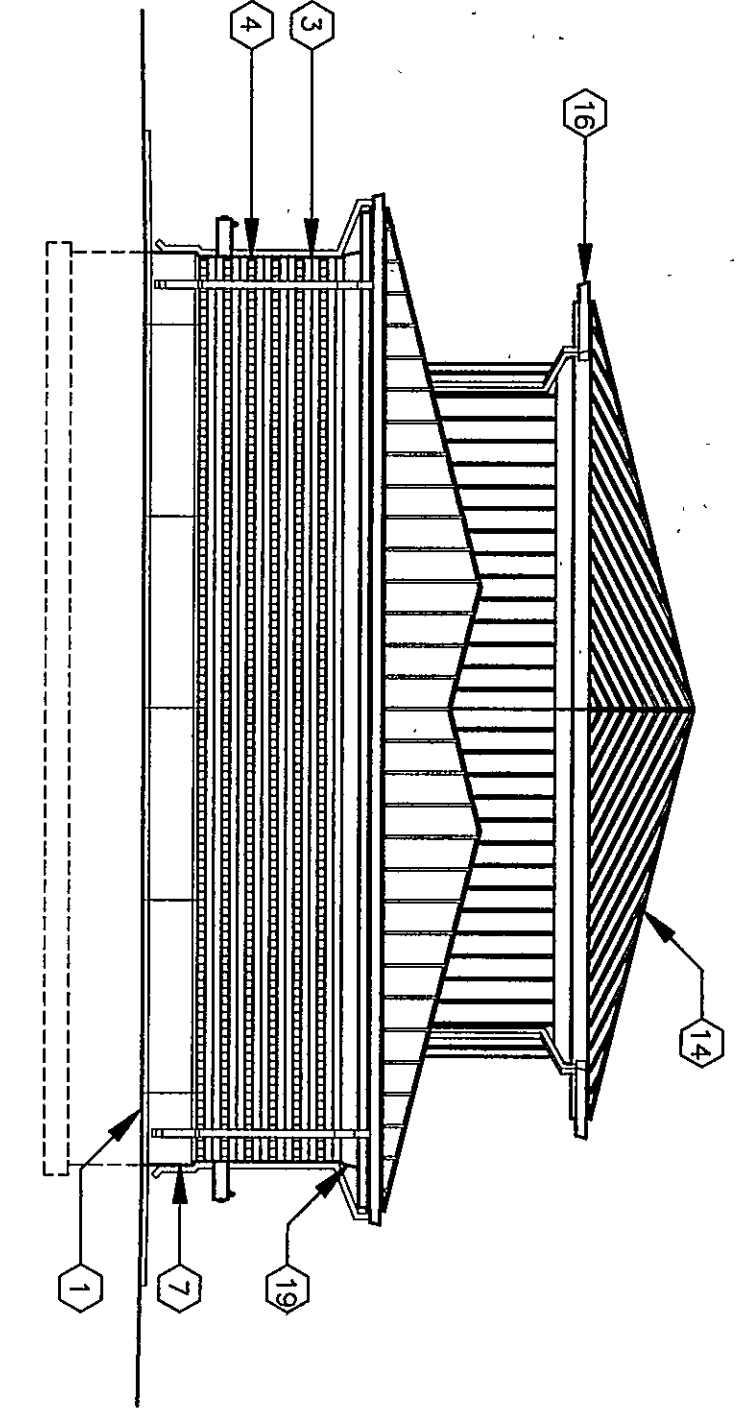
2 WEST ELEVATION  
UNIT: R'  
SCALE: 1/8"=1'-0"



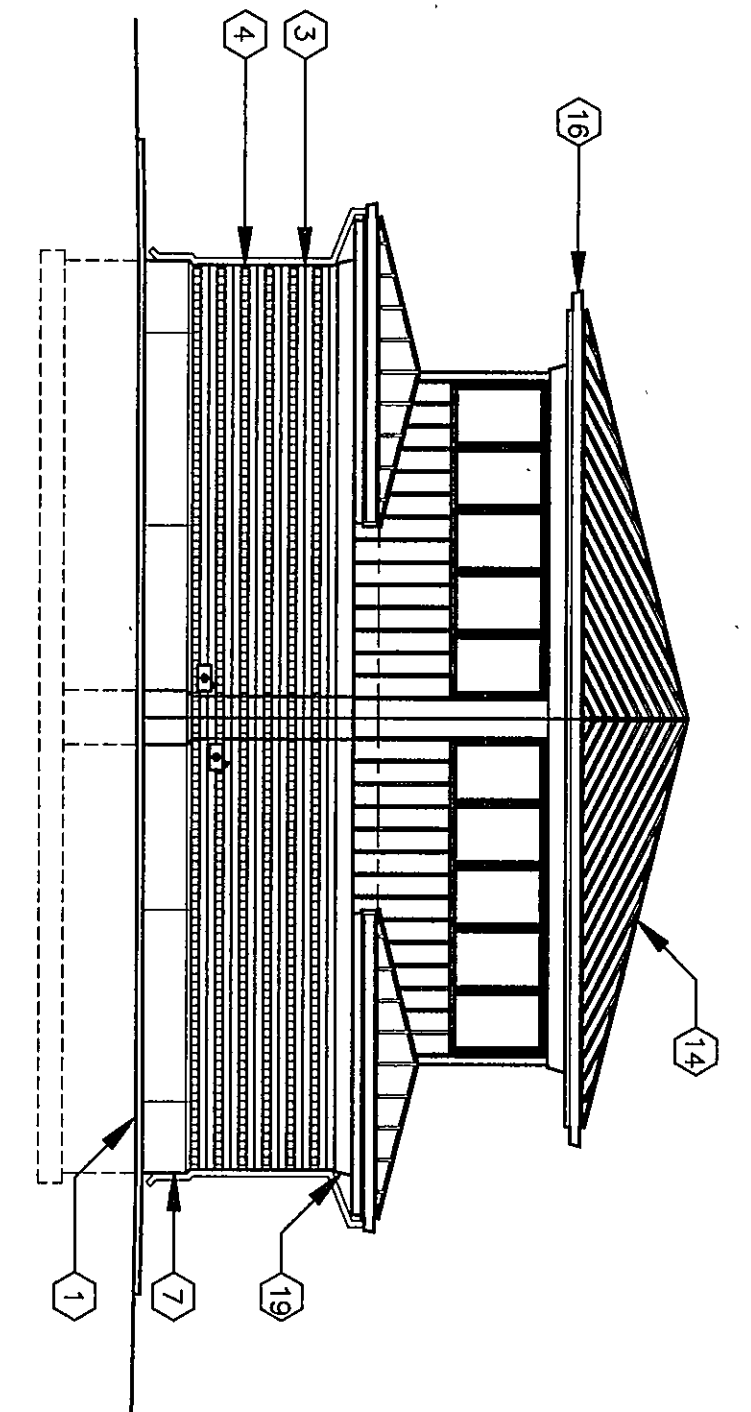
4 NORTH ELEVATION  
UNIT: R'  
SCALE: 1/8"=1'-0"



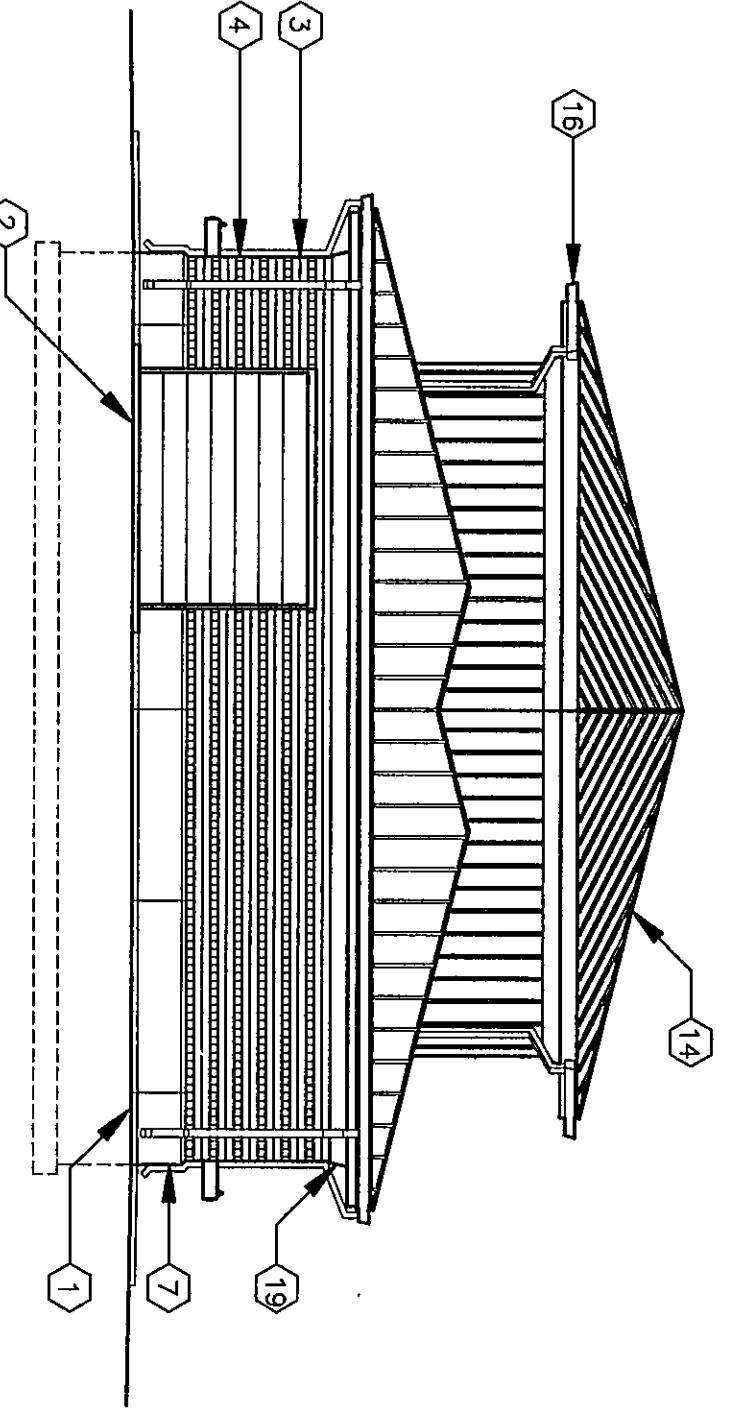
5 EAST ELEVATION  
UNIT: T' & V'  
SCALE: 1/8"=1'-0"



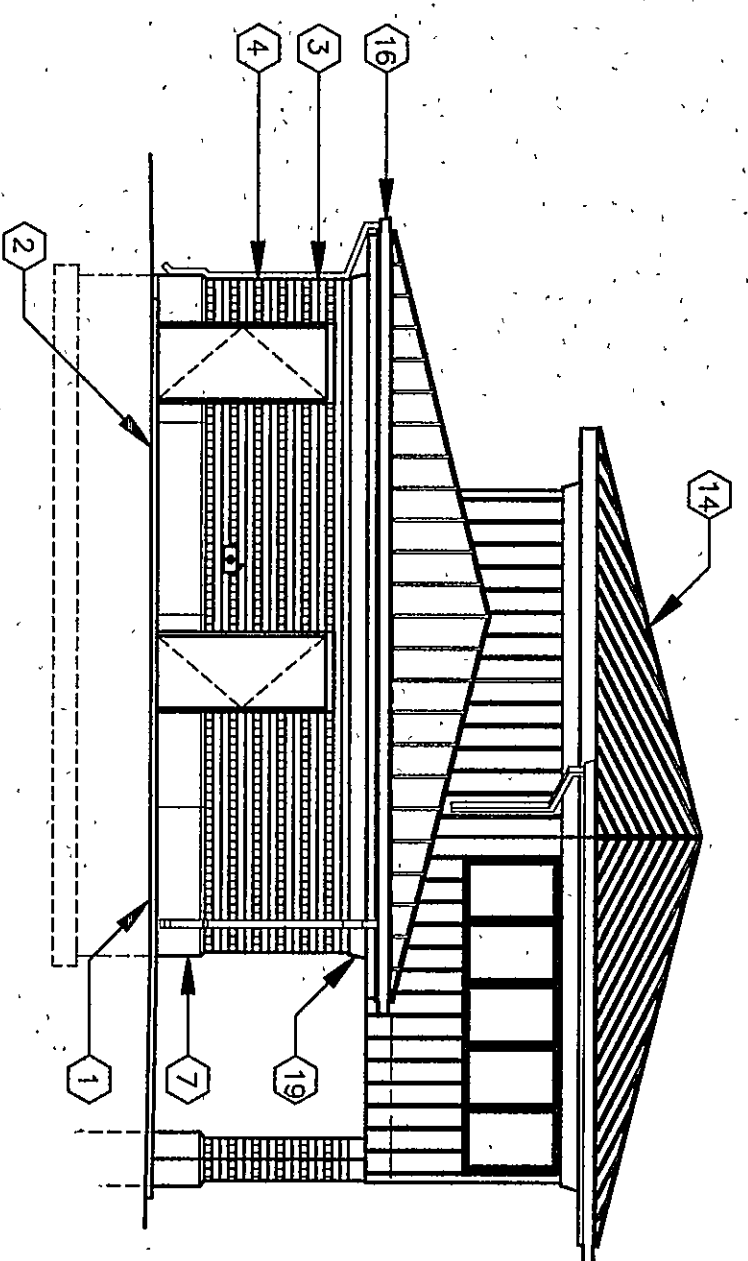
6 WEST ELEVATION  
UNIT: T'  
SCALE: 1/8"=1'-0"



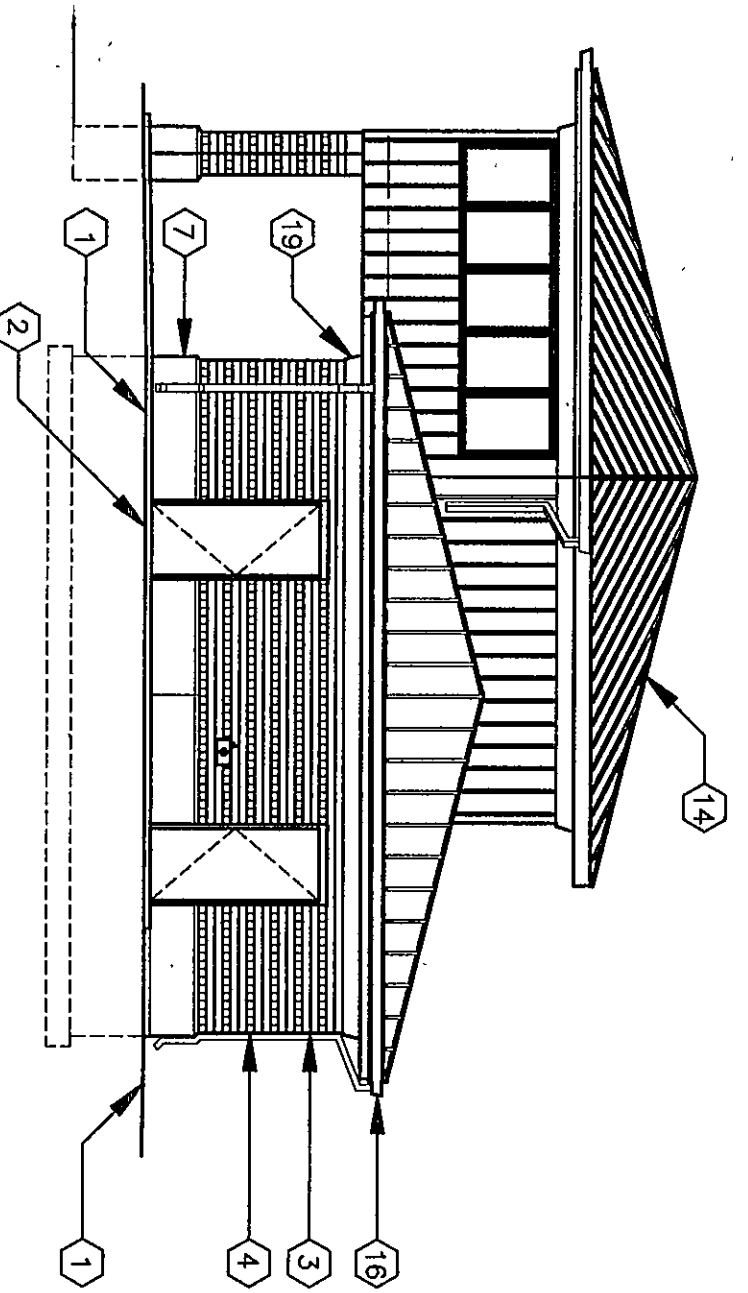
7 EAST ELEVATION  
UNIT: U'  
SCALE: 1/8"=1'-0"



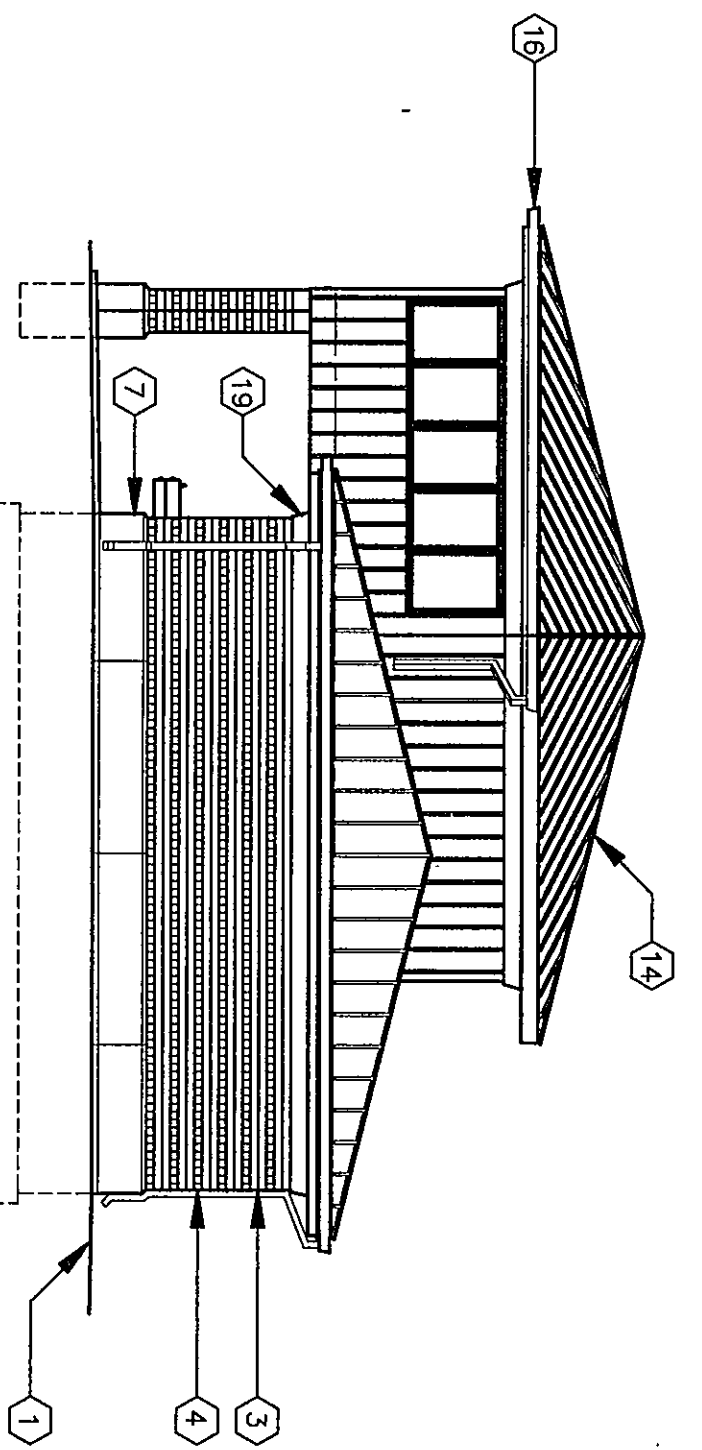
8 WEST ELEVATION  
UNIT: V'  
SCALE: 1/8"=1'-0"



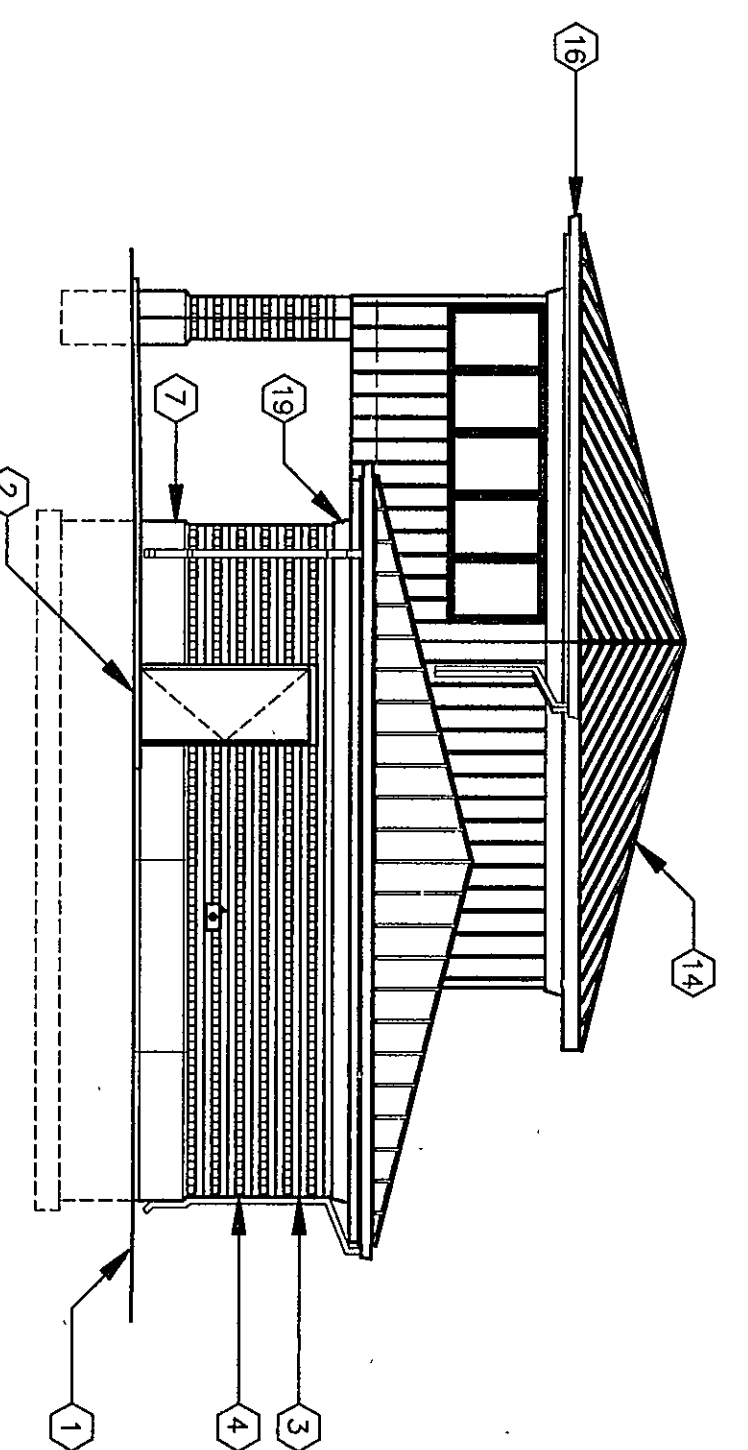
9 SOUTH  
UNIT: T'  
UNIT: V' SIMILAR  
SCALE: 1/8"=1'-0"



10 NORTH ELEVATION  
SCALE: 1/8"=1'-0"



11 NORTH ELEVATION  
UNIT: V'  
SCALE: 1/8"=1'-0"



12 NORTH ELEVATION  
UNIT: V'  
SCALE: 1/8"=1'-0"

97-A-54

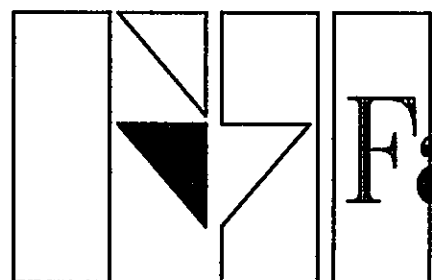
CHESTERTON HIGH SCHOOL  
95067.00

BUILDING ELEVATIONS

DRAWN BY: TOD,SM COMM. NO.: 95067.00  
CHECKED BY: LEC DATE: APRIL 21, 1997

A3.11

REVISIONS NO. DATE



Fanning/Howey  
Associates, Inc.  
Architects Engineers Consultants

THE NEW  
CHESTERTON HIGH SCHOOL  
FOR THE  
DUNELAND SCHOOL CORPORATION  
CHESTERTON, INDIANA

COPYRIGHT 1997 BY FANNING/HOWEY ASSOCIATES, INC.

