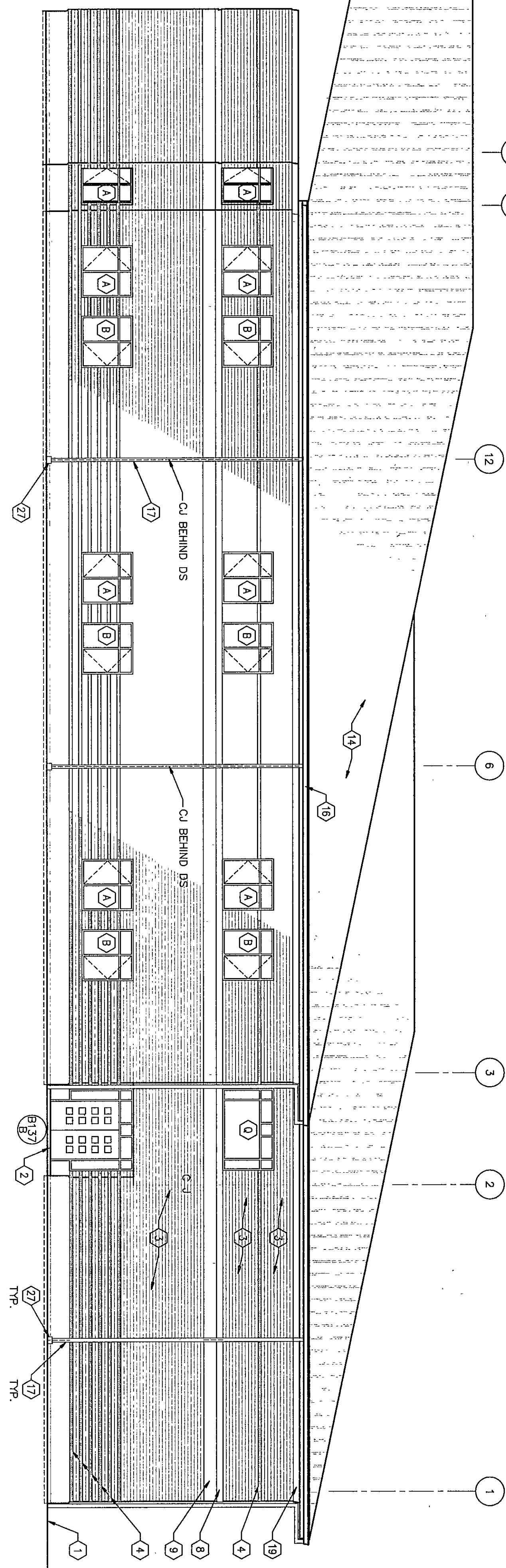
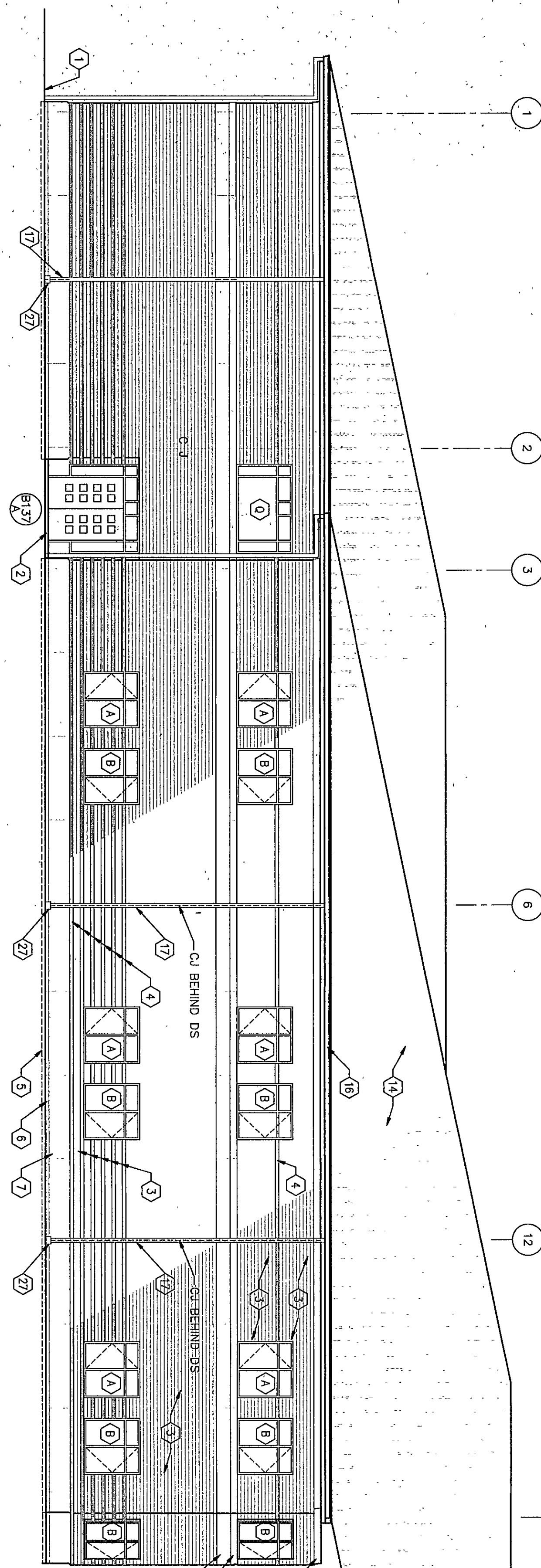


KEYNOTES

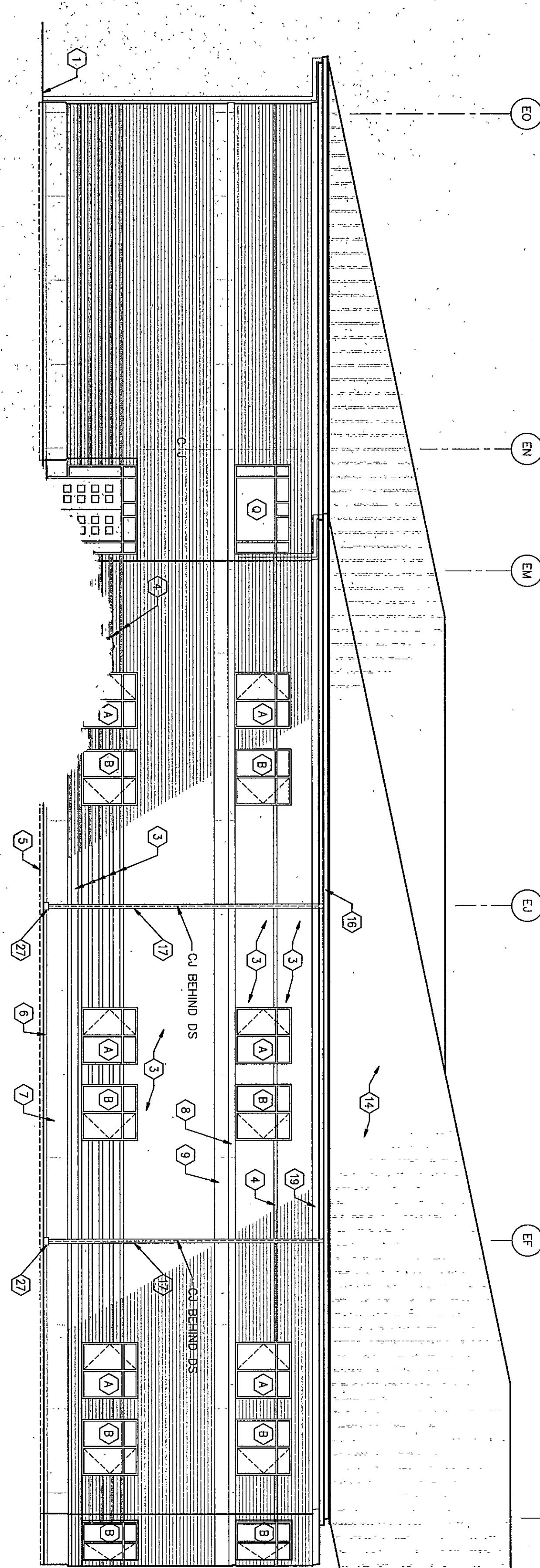
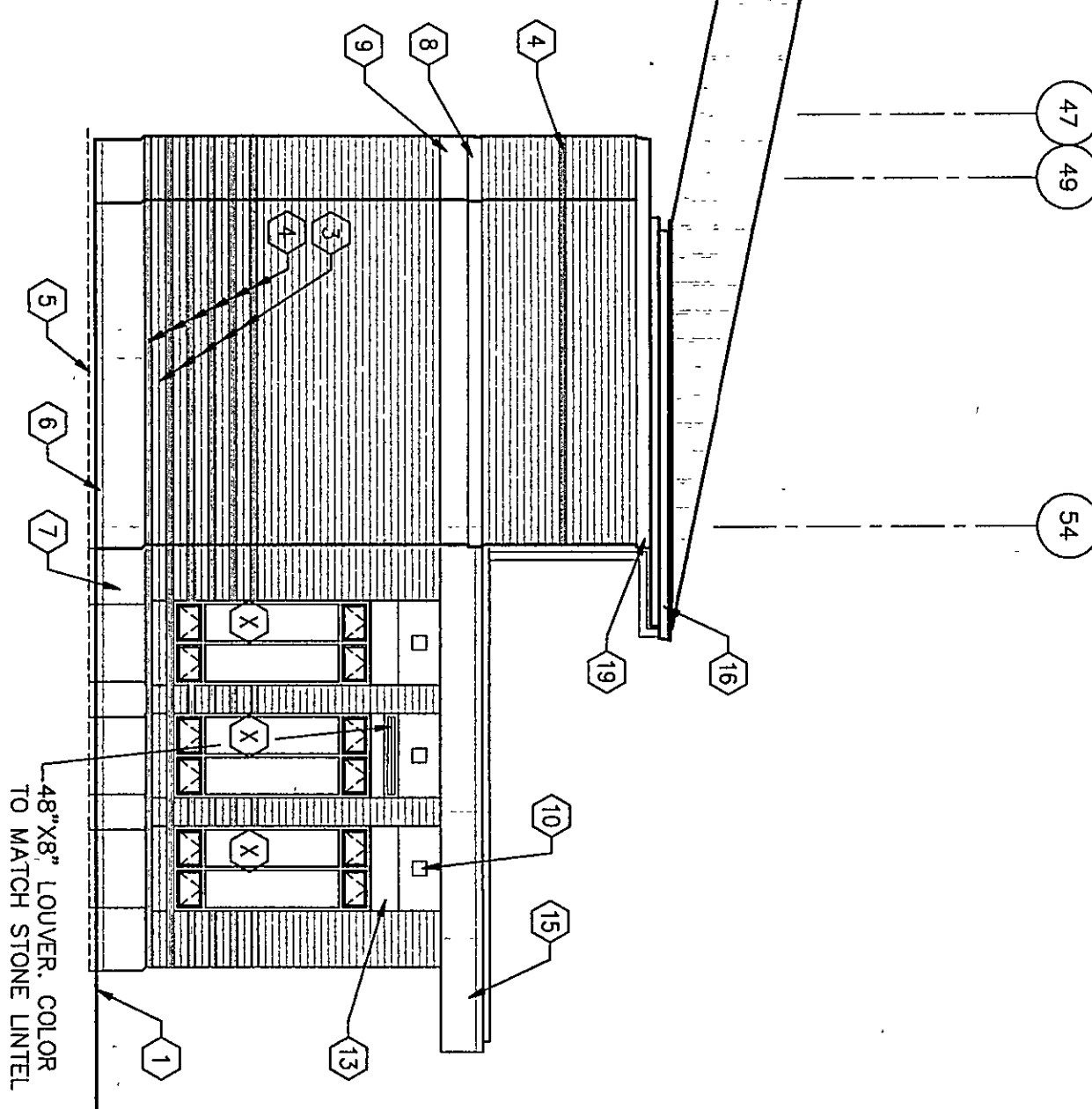
- 1 INDICATES FINISH GRADE - REFER TO SITE DRAWINGS
- 2 CONCRETE STOP - REFER TO STRUCTURAL DRAWINGS
- 3 INDICATES FACE BRICK - COLOR 'A' - REFER TO SECTION 04200.
- 4 INDICATES FACE BRICK - COLOR 'B' - REFER TO SECTION 04200.
- 5 CAST STONE LEDGE @ 9'-4"
- 6 CAST STONE STARTER COURSE - REFER TO SECTION 04720.
- 7 CAST STONE WATER TABLE - REFER TO SECTION 04720.
- 8 CAST STONE SILL - REFER TO SECTION 04720.
- 9 CAST STONE - REFER TO SECTION 04720.
- 10 CAST STONE MEDALLION - REFER TO SECTION 04720. (REFER TO DETAIL 6-A5.2 FOR PROFILES)
- 11 CAST STONE COPING - REFER TO SECTION 04720.
- 12 CAST STONE PIER CAP - REFER TO SECTION 04720.
- 13 CAST STONE UNIT - REFER TO SECTION 04720.
- 14 PREFORMED METAL ROOFING - REFER TO SECTION 07412.
- 15 METAL FASCIA AND GRAVEL STOP - REFER TO SECTION 07500.
- 16 METAL GUTTER - REFER TO SECTION 07412.
- 17 METAL DOWNSPOUT - REFER TO SECTION 07412.
- 18 METAL COPING - REFER TO SECTION 07500.
- 19 EPS - REFER TO SECTION 07240.
- 20 FULLY ADHERED FLEXIBLE SHEET ROOFING - REFER TO SECTION 07231.
- 21 PREFINISHED METAL FLASHING - REFER TO SECTION 07412.
- 22 PREFINISHED METAL GRAVEL STOP - REFER TO SECTION 07500.
- 23 EDUCATIONAL CASEWORK - REFER TO EQUIPMENT PLANS.
- 24 GIBB BULKHEAD PAINTED - REFER TO REFLECTED CEILING PLANS.
- 25 SLOPED PROJECTION SURFACE AND ACT CEILING ALTERNATE BID.
- 26 ACT CEILING - REFER TO ROOM FINISH SCHEDULE.
- 27 DOWNSPOUT BOOT - REFER TO SU SERIES DRAWINGS
- 28 SPLASH BLOCK



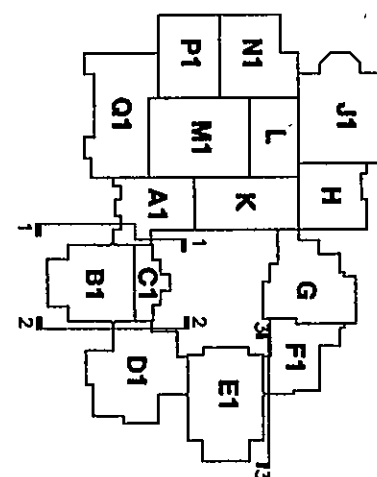
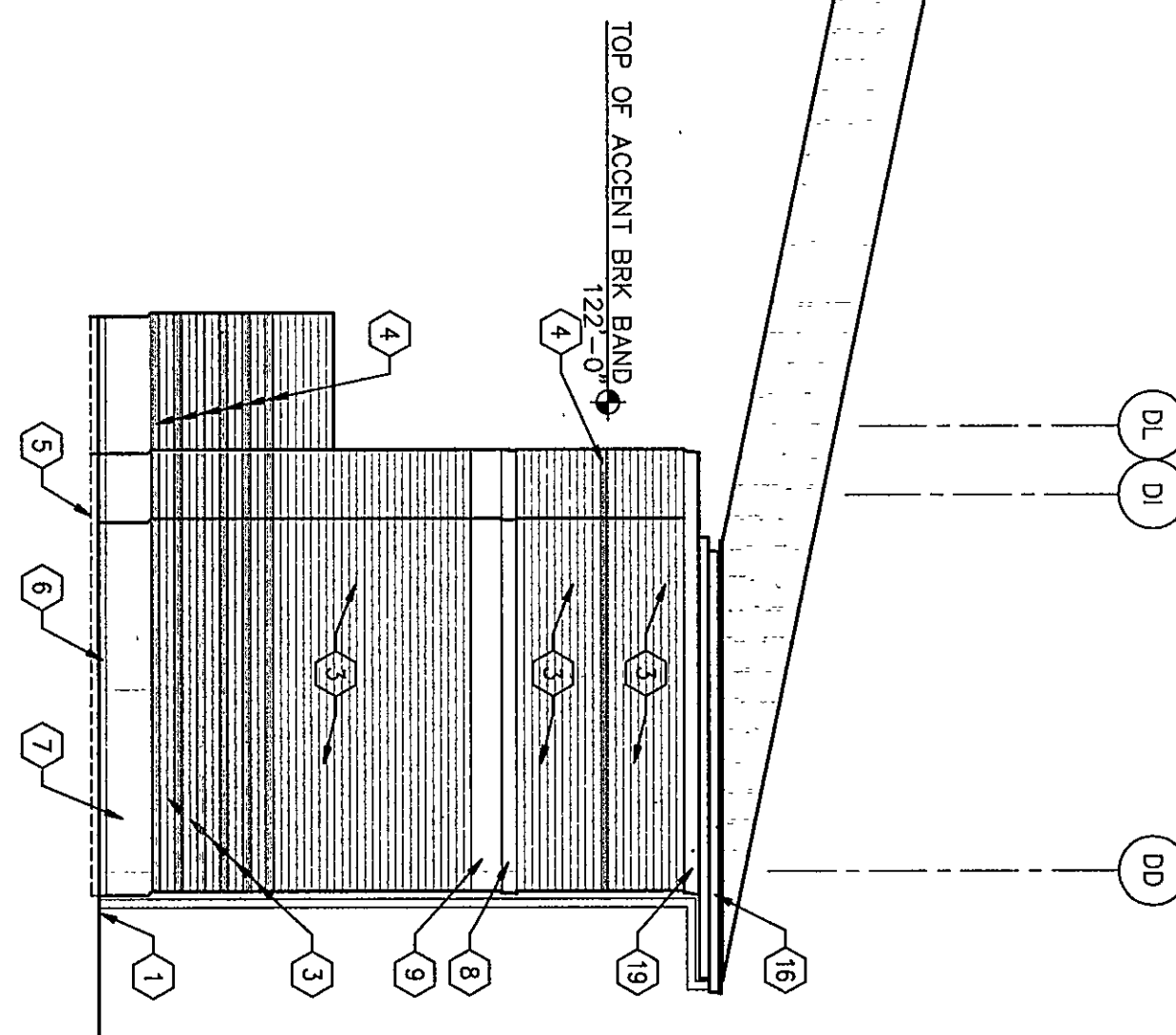
1 NORTH ELEVATION - UNIT B&C
1/8" = 1'-0"



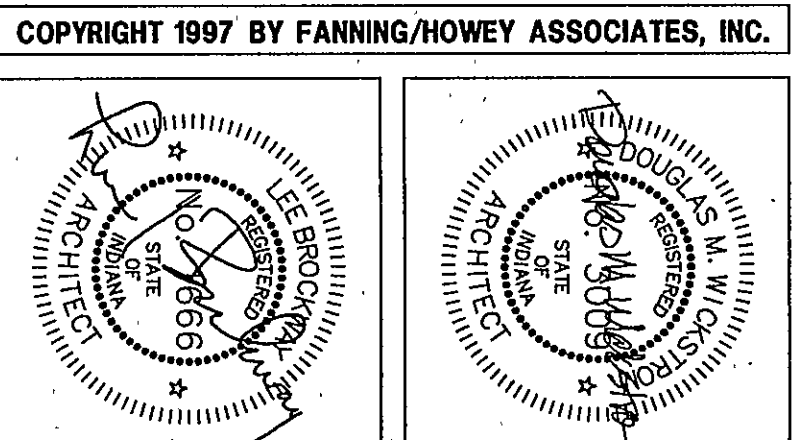
2 SOUTH ELEVATION - UNIT B&C
1/8" = 1'-0"



3 EAST ELEVATION - UNIT E
1/8" = 1'-0"



THE NEW
CHESTERTON HIGH SCHOOL
FOR THE
DUNELAND SCHOOL CORPORATION
CHESTERTON, INDIANA



Fanning/Howe Associates, Inc.
Architects Engineers Consultants

BUILDING ELEVATIONS	
DRAWN BY: JHJ	COMM. NO.: 95067.00
CHECKED BY: JHJ	DATE: APRIL 21, 1997
REVISIONS NO. DATE	
A3.8	

97-A-51