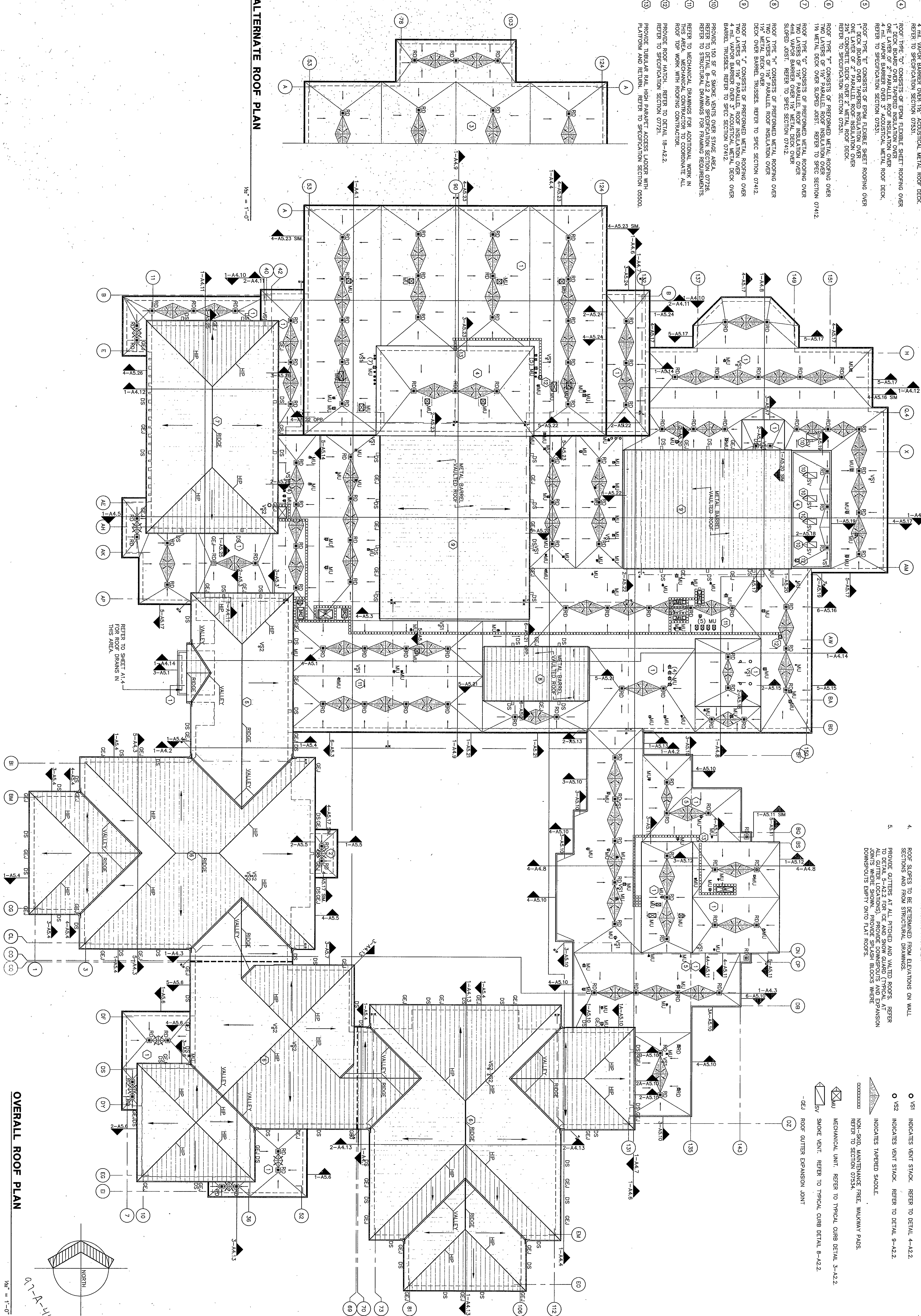


ROOF PLAN NOTES

1. ROOF TYPE "A" CONSISTS OF EPDM FLEXIBLE SHEET ROOFING OVER 1" DECK BOARD OVER JARRED INSULATION OVER 1 1/2" METAL ROOF DECK. REFER TO SPECIFICATION SECTION 07531.
2. ROOF TYPE "B" CONSISTS OF EPDM FLEXIBLE SHEET ROOFING OVER 1" DECK BOARD OVER JARRED INSULATION OVER 1 1/2" METAL ROOF DECK. REFER TO SPECIFICATION SECTION 07531.
3. ROOF TYPE "C" CONSISTS OF EPDM FLEXIBLE SHEET ROOFING OVER 1" DECK BOARD OVER JARRED INSULATION OVER 1 1/2" METAL ROOF DECK. REFER TO SPECIFICATION SECTION 07531.
4. ROOF TYPE "D" CONSISTS OF EPDM FLEXIBLE SHEET ROOFING OVER 1" DECK BOARD OVER JARRED INSULATION OVER 1 1/2" METAL ROOF DECK. REFER TO SPECIFICATION SECTION 07531.
5. ROOF TYPE "E" CONSISTS OF EPDM FLEXIBLE SHEET ROOFING OVER 1" DECK BOARD OVER JARRED INSULATION OVER 1 1/2" METAL ROOF DECK. REFER TO SPECIFICATION SECTION 07531.
6. ROOF TYPE "F" CONSISTS OF EPDM FLEXIBLE SHEET ROOFING OVER 1" DECK BOARD OVER JARRED INSULATION OVER 1 1/2" METAL ROOF DECK. REFER TO SPECIFICATION SECTION 07531.
7. ROOF TYPE "G" CONSISTS OF EPDM FLEXIBLE SHEET ROOFING OVER 1" DECK BOARD OVER JARRED INSULATION OVER 1 1/2" METAL ROOF DECK. REFER TO SPECIFICATION SECTION 07531.
8. ROOF TYPE "H" CONSISTS OF EPDM FLEXIBLE SHEET ROOFING OVER 1" DECK BOARD OVER JARRED INSULATION OVER 1 1/2" METAL ROOF DECK. REFER TO SPECIFICATION SECTION 07531.
9. ROOF TYPE "I" CONSISTS OF EPDM FLEXIBLE SHEET ROOFING OVER 1" DECK BOARD OVER JARRED INSULATION OVER 1 1/2" METAL ROOF DECK. REFER TO SPECIFICATION SECTION 07531.
10. ROOF TYPE "J" CONSISTS OF EPDM FLEXIBLE SHEET ROOFING OVER 1" DECK BOARD OVER JARRED INSULATION OVER 1 1/2" METAL ROOF DECK. REFER TO SPECIFICATION SECTION 07531.
11. ROOF TYPE "K" CONSISTS OF EPDM FLEXIBLE SHEET ROOFING OVER 1" DECK BOARD OVER JARRED INSULATION OVER 1 1/2" METAL ROOF DECK. REFER TO SPECIFICATION SECTION 07531.
12. ROOF TYPE "L" CONSISTS OF EPDM FLEXIBLE SHEET ROOFING OVER 1" DECK BOARD OVER JARRED INSULATION OVER 1 1/2" METAL ROOF DECK. REFER TO SPECIFICATION SECTION 07531.
13. PROVIDE TUBULAR RAIL HIGH PARAPET ACCESS LADDER WITH PLATFORM AND RETURN. REFER TO SPECIFICATION SECTION 05550.

ALTERNATE ROOF PLAN



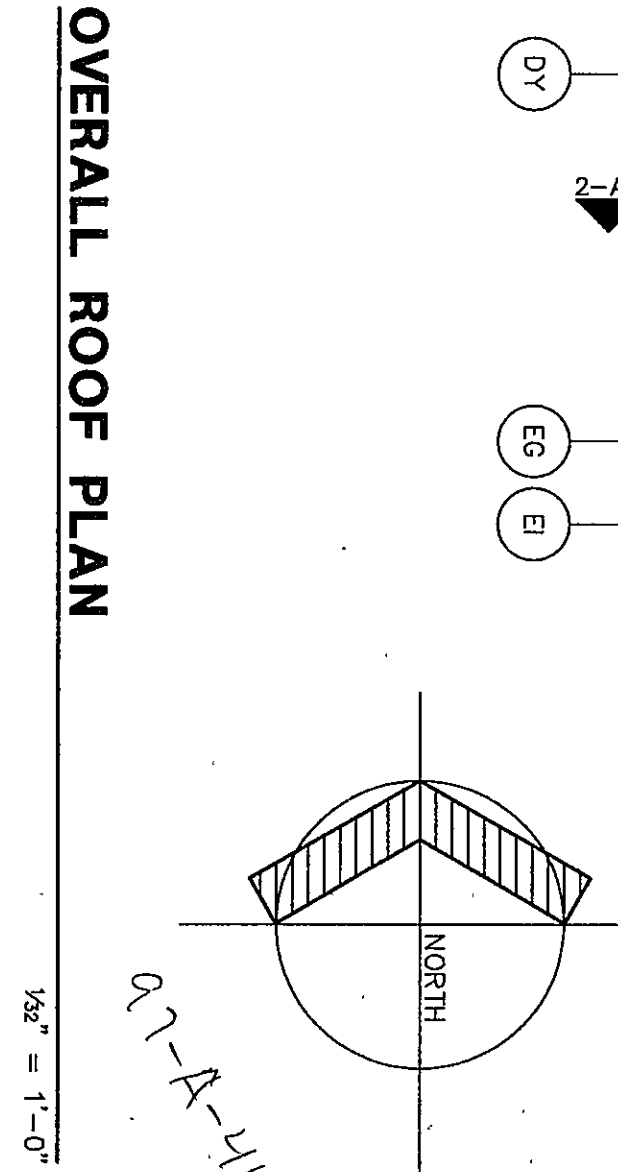
GENERAL NOTES

1. GUTTERS IN ROOF WILL BE CUT BY CONTRACTOR RESPONSIBLE FOR ROOF. MECHANICAL CONTRACTOR TO COORDINATE LOCATION OF ANY OPENING IN ROOF WITH ROOF CONTRACTOR.
2. REFER TO PLUMBING, MECHANICAL, AND VENTILATION DRAWINGS FOR NEW EQUIPMENT LOCATIONS THAT ARE REQUIRED TO BE IN ROOF. PROVIDE 12" DIA. VENT STACK FLASHING, AND TO DETAIL 3-A4.2 FOR CRAB FLASHING.
3. ROOF CONTRACTOR SHALL PROTECT ALL ROOF DRAINS FROM DAMAGE DURING CONSTRUCTION. ROOF CONTRACTOR SHALL BE RESPONSIBLE FOR PROTECTING ALL ROOF DRAINS AND WORK TO ENSURE THAT ALL ROOF DRAINS ARE FREE OF DEBRIS AND ARE FUNCTIONING PROPERLY.
4. ROOF SLOPES TO BE DETERMINED FROM ELEVATIONS ON WALL SECTIONS AND FROM STRUCTURAL DRAWINGS.
5. PROVIDE GUTTERS AT ALL PITCHED AND VALUED ROOFS. REFER TO DETAIL 3-A4.2 FOR CRAB FLASHING. PROVIDE DOWNSPUTS AND EXPANSION JOINTS WHERE SHOWN. PROVIDE FLASH BLOCKS WHERE DOWNSPUTS EMPTY ONTO FLAT ROOFS.

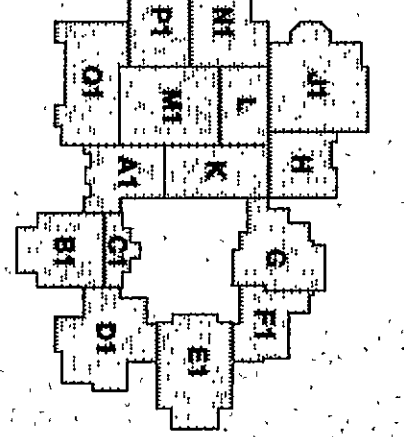
ROOF PLAN SYMBOL LEGEND

- KEY NOTES:
- ROOF EXPANSION JOINT. REFER TO DETAIL 10-A4.2
 - INDICATES ROOF DRAIN WITH ROOF SUMP. REFER TO DETAIL 2-A4.2
 - INDICATES DIRECTION OF ROOF SLOPE.
 - INDICATES FLE.
 - VSI INDICATES VENT STACK. REFER TO DETAIL 4-A4.2
 - VSI INDICATES VENT STACK. REFER TO DETAIL 9-A4.2
 - INDICATES TAPERED SADDLE.
 - NON-SOLID MAINTENANCE FREE WALKWAY PADS. REFER TO SECTION 07534
 - MECHANICAL UNIT. REFER TO TYPICAL CURB DETAIL 3-A4.2
 - SMOKE VENT. REFER TO TYPICAL CURB DETAIL 8-A4.2
 - ROOF GUTTER EXPANSION JOINT

OVERALL ROOF PLAN



Fanning/Howey Associates, Inc.
Architects Engineers Consultants



THE NEW
CHESTERTON HIGH SCHOOL
FOR THE
DUNELAND SCHOOL CORPORATION
CHESTERTON, INDIANA

COPYRIGHT 1997 BY FANNING/HOWEY ASSOCIATES, INC.

Professional Engineer Seal for Fanning/Howey Associates, Inc., State of Indiana, License No. 12666, dated 10/1/96.

OVERALL ROOF PLAN

DRAWN BY: LEC COMM. NO.: 95067.00
CHECKED BY: JHJ DATE: APRIL 21, 1997

A2.1

REVISIONS NO. DATE