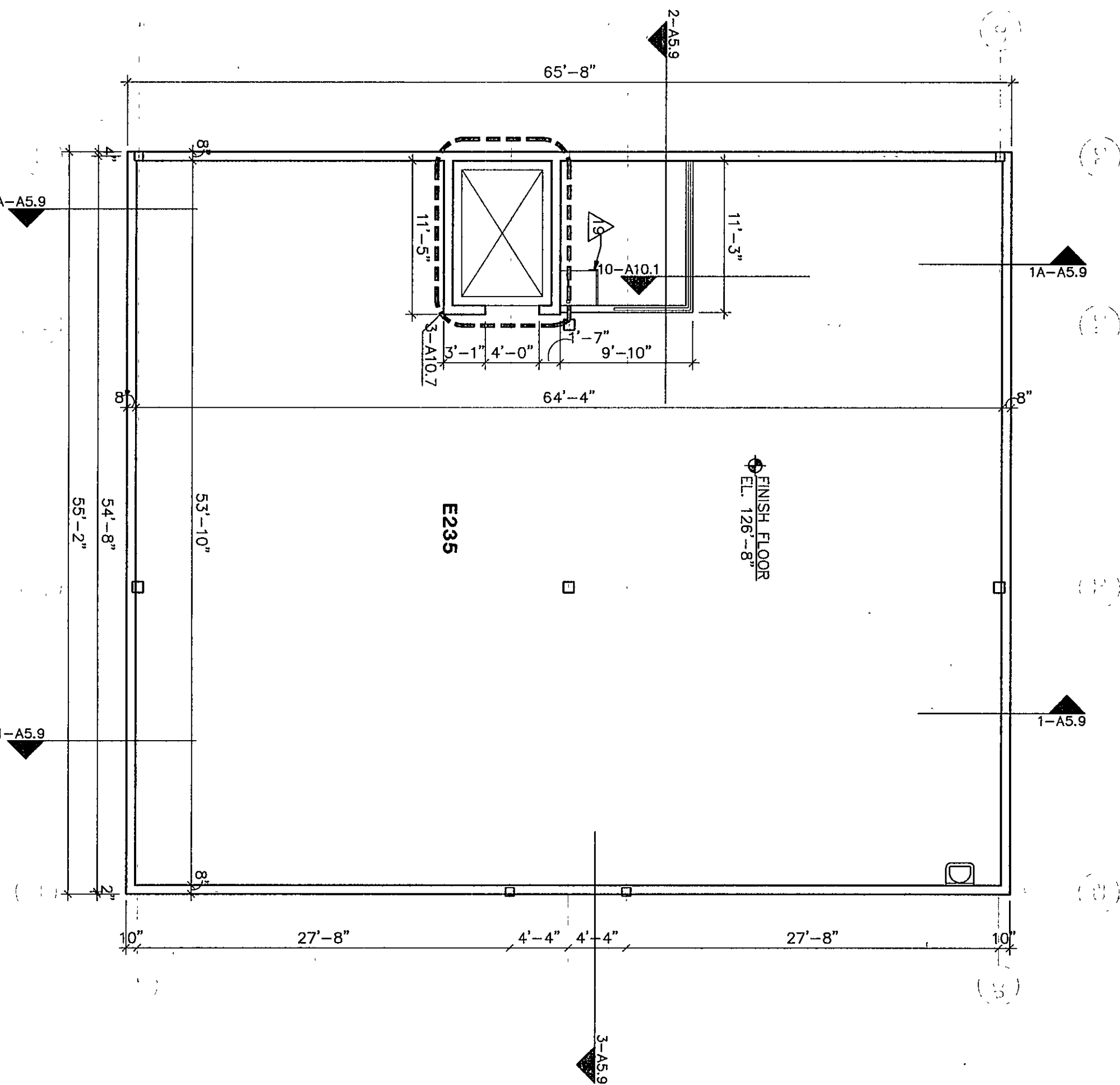


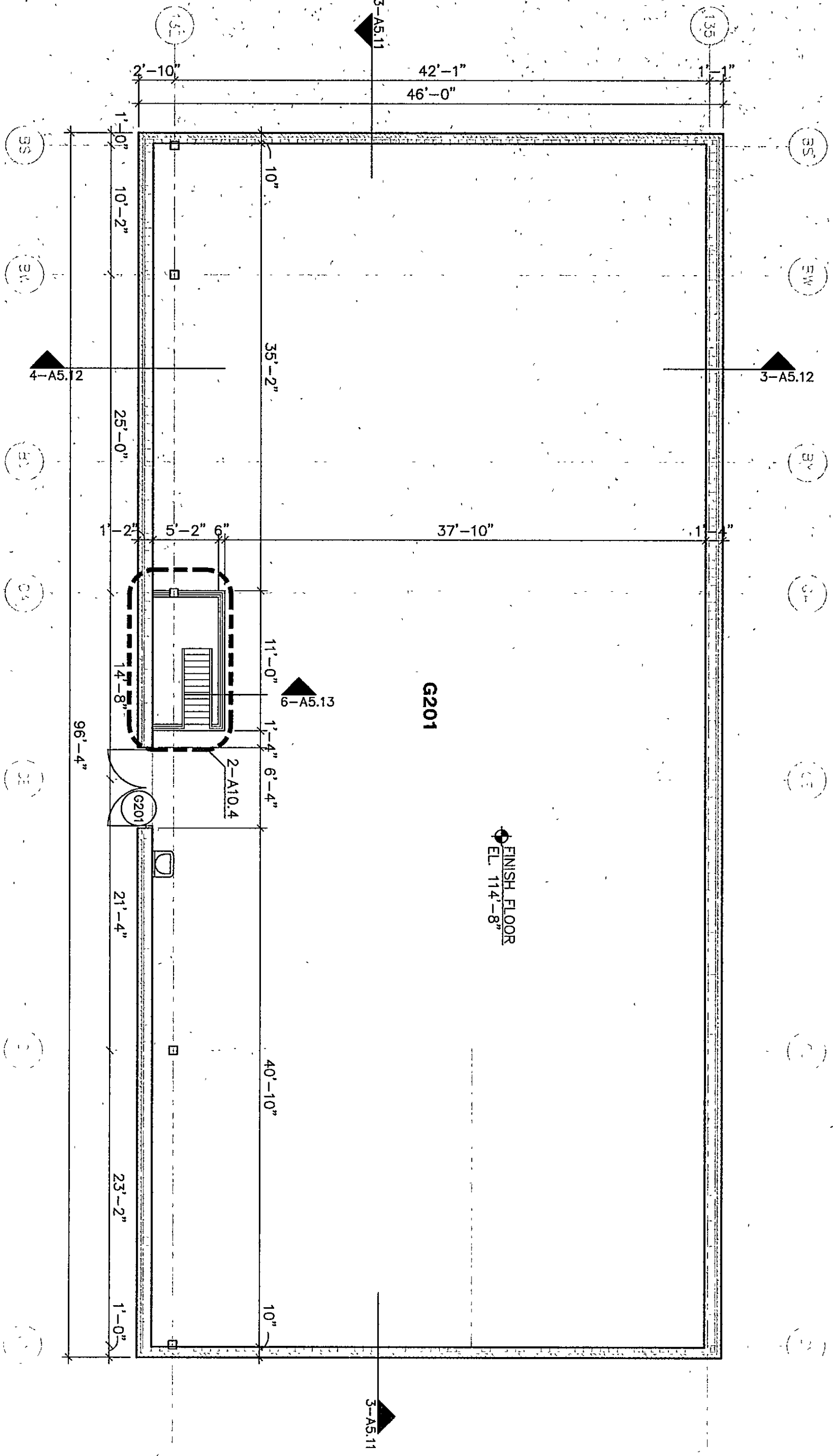
MEZZININE PLAN UNIT B

1/8" = 1'-0"



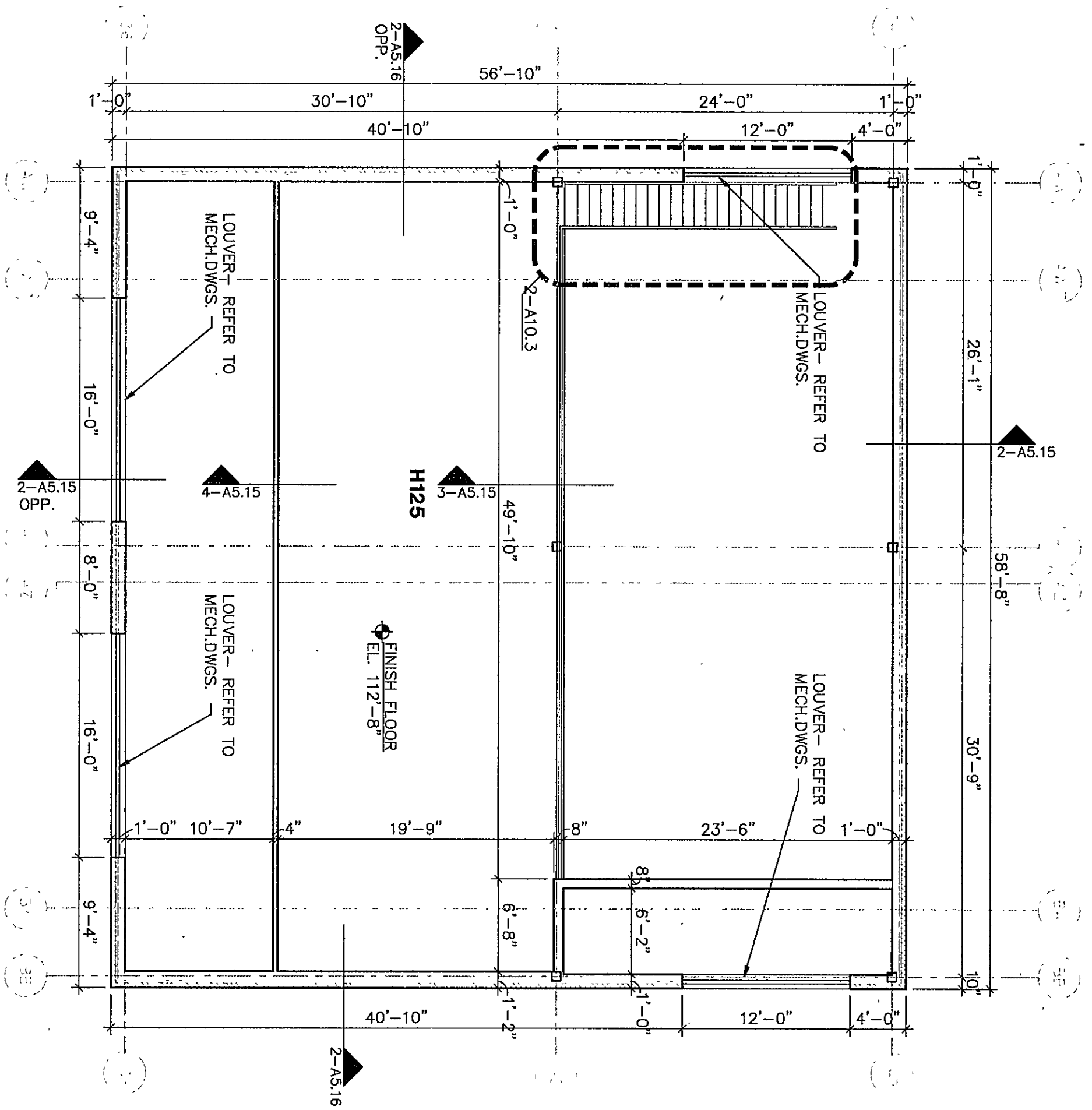
MEZZININE PLAN UNIT E

1/8" = 1'-0"



MEZZININE PLAN UNIT H

1/8" = 1'-0"

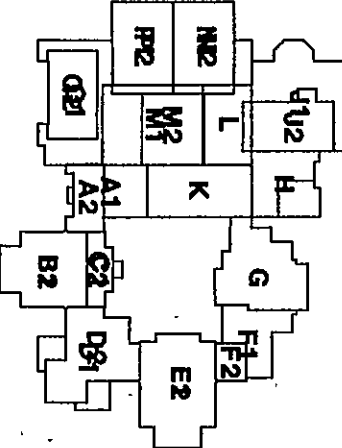


FLOOR PLAN NOTES

- WHERE DIFFERENT FLOOR MATERIALS MEET THEY SHALL MEET UNDER THE CENTERLINE OF THE ROOM, UNLESS NOTED OTHERWISE.
- WALLS THAT DO NOT LAY OUT IN FULL OR HALF UNITS SHALL BE CONSTRUCTED USING UNITS WITH A 1/4" RADIUS TO LOCKERS. USE BULLDOGE CORNER UP TO UNDERSIDE OF CEILING OR BULKHEAD PLANE, ABOVE THIS PLANE USE CNU W/O BULLDOGE CORNER.
- INTERIOR MASONRY WALLS THAT RUN UP TO THE UNDERSIDE OF THE DECK SHALL HAVE A 1" JOINT AT THE DECK FILLED WITH FIRESTOPPING AT RATED WALLS PER SPEC SECT. 07200 AND BATT INSULATION AT NON-RATED WALLS THAT ALLOW FOR DEFLECTION.
- SEE DETAILS ON SHEET A1.31 FOR TYPICAL MASONRY CONTROL JOINTS AND EXPANSION JOINTS.
- SINGLE WHITE MASONRY WALLS ARE INDICATED AT NOMINAL DIMENSIONS.
- EXPOSED CONCRETE MASONRY UNITS (CMU) CORNERS ARE TO BE CONSTRUCTED USING UNITS WITH A 1/4" RADIUS TO LOCKERS. USE BULLDOGE CORNER UP TO UNDERSIDE OF CEILING OR BULKHEAD PLANE, ABOVE THIS PLANE USE CNU W/O BULLDOGE CORNER.
- FINISH FLOOR ELEVATION INDICATED FOR THE BUILDING IS 100'-0". REFER TO THE SITE PLAN FOR CORRELATION TO USGS DATUM.
- SEE SHEET A7.26 FOR MOUNTING HEIGHTS.
- INTERIOR AND EXTERIOR WALLS ARE TO BE CONSTRUCTED USING UNITS WITH A 1/4" RADIUS TO LOCKERS. USE BULLDOGE CORNER UP TO UNDERSIDE OF CEILING OR BULKHEAD PLANE, ABOVE THIS PLANE USE CNU W/O BULLDOGE CORNER.
- ALL DIMENSIONS INDICATED ARE NOMINAL. METAL STUD WALLS ARE DIMENSIONED TO FACE OF STUDS. REFER TO INDICATED PLAN DETAILS OR SECTIONS FOR ACTUAL DIMENSIONS, WHERE INDICATED.
- UNLESS OTHERWISE NOTED, THE WALL LENGTH FROM THE FINISH FLOOR TO THE FINISH CEILING (FINISH CEILING SIDE OF DOOR FRAMES) TO THE NEAREST INTERSECTING WALL IS TO BE FOUR INCHES. (4")
- REFER TO SHEET A1.3 FOR WALL TYPES.
- GENERAL NOTE: BUILDING DIMENSIONS ARE TO FACE OF BRICK.
- GENERAL NOTE: FINISH FLOOR ELEVATION = 100'-0" FOR THE FIRST FLOOR AND 114'-8" FOR THE SECOND FLOOR UNLESS OTHERWISE NOTED.

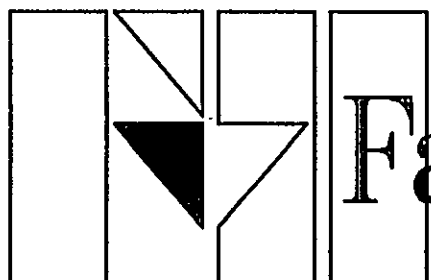
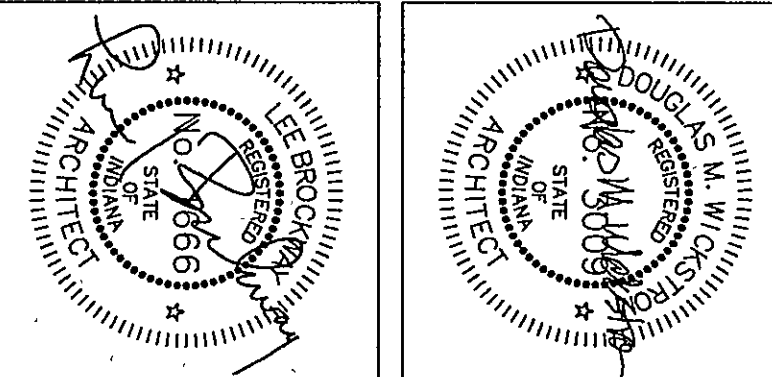
KEY NOTES

- INDICATES BUILDING LINE, ABOVE - REFER TO SPEC. SECT. 05050 FOR DETAILS.
- INDICATES ROOF OVERHANG - SEE SECTIONS 5-A7.29.
- INDICATES ROOF OVERHANG - SEE SECTIONS 5-A7.29.
- TYPE I OPERABLE WALL - REFER TO SPEC. SECTION 05050 FOR DETAILS.
- TYPE II OPERABLE WALL - REFER TO SPEC. SECTION 05050 FOR DETAILS.
- APPLY PLASTER SKIN COAT OVER CONC. MASONRY UNITS WHERE INDICATED PER SPEC. SEC. 09200.
- METAL STUDS @ 1'-4" O.C. WITH 1/2" Gypsum BOARD BOTH SIDES - REFER TO SPEC. SEC. 05050 FOR DETAILS.
- INDICATES CORNER GUARD - REFER TO SPEC. SEC. 05050 FOR DETAILS.
- INDICATES ADA COMPLIANT SHOWER CURB. REFER TO SECTIONS AND DETAILS 12-A7.28.
- DISPLAY CASE - REFER TO EQUIPMENT DRAWINGS.
- LOCKER BENCH/BASE - REFER TO DETAIL 1-A7.30 AND 2-A7.30.
- INDICATES FLOOR FINISH PER DETAIL 11-54.5 FOR FLOOR FINISHES WITH FLOOR FINISHES AND CASEWORK.
- INDICATES POSTER CASE - REFER TO EQUIPMENT DRAWINGS.
- METAL STUDS @ 1'-4" O.C. W/5/8" GYPSUM BOARD ON EXPOSED FACE ONLY - REFER TO SPEC. SECTION 05050. SEE NOTE 7 ABOVE REGARDING NOMINAL DIMENSIONS.
- METAL STUDS @ 1'-4" O.C. W/5/8" GYPSUM BOARD ON EXPOSED FACE ONLY - REFER TO SPEC. SECTION 05050. SEE NOTE 7 ABOVE REGARDING NOMINAL DIMENSIONS.
- BUILT-IN BENCH, REFER TO DETAIL 18-A7.28.
- INDICATES BUILDING EXPANSION JOINT, REFER TO INDICATED SECTIONS.
- WIRE MESH PARTITIONS-REFER TO SPEC. SEC. 10605.
- INDICATES LOCKER-REFER TO SPEC. SEC. 05500.
- LOCKER BASE - SEE SECTION 3-A7.30.



THE NEW
CHESTERTON HIGH SCHOOL
FOR THE
DUNELAND SCHOOL CORPORATION
CHESTERTON, INDIANA

COPYRIGHT 1997 BY FANNING/HOWEY ASSOCIATES, INC.



Fanning/Howey
Associates, Inc.
Architects Engineers Consultants

MISC. MEZZ PLANS

DRAWN BY: LJ/LEC COMM. NO.: 95067.00
CHECKED BY: JHJ DATE: APRIL 21, 1997

REVISIONS NO. DATE

A1.29

CHESTERTON HIGH SCHOOL
95067.00

07-A-51