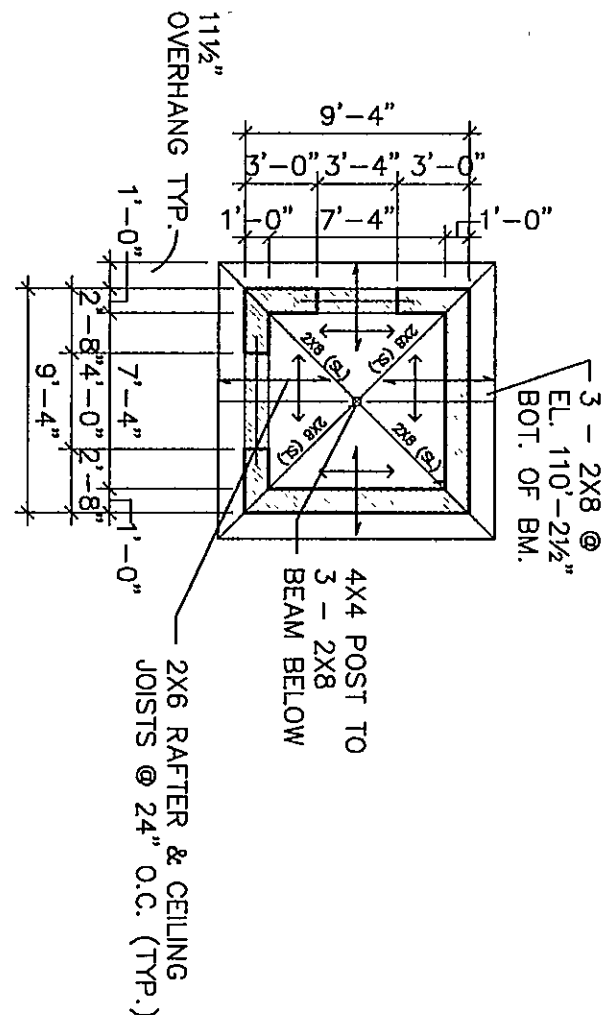


TRANSMITTER BUILDING

1/8" = 1'-0"

TICKET BOOTH-FLOOR PLAN

1/8" = 1'-0"



TICKET BOOTH-STRUCTURAL PLAN

1/8" = 1'-0"

EAST ELEVATION

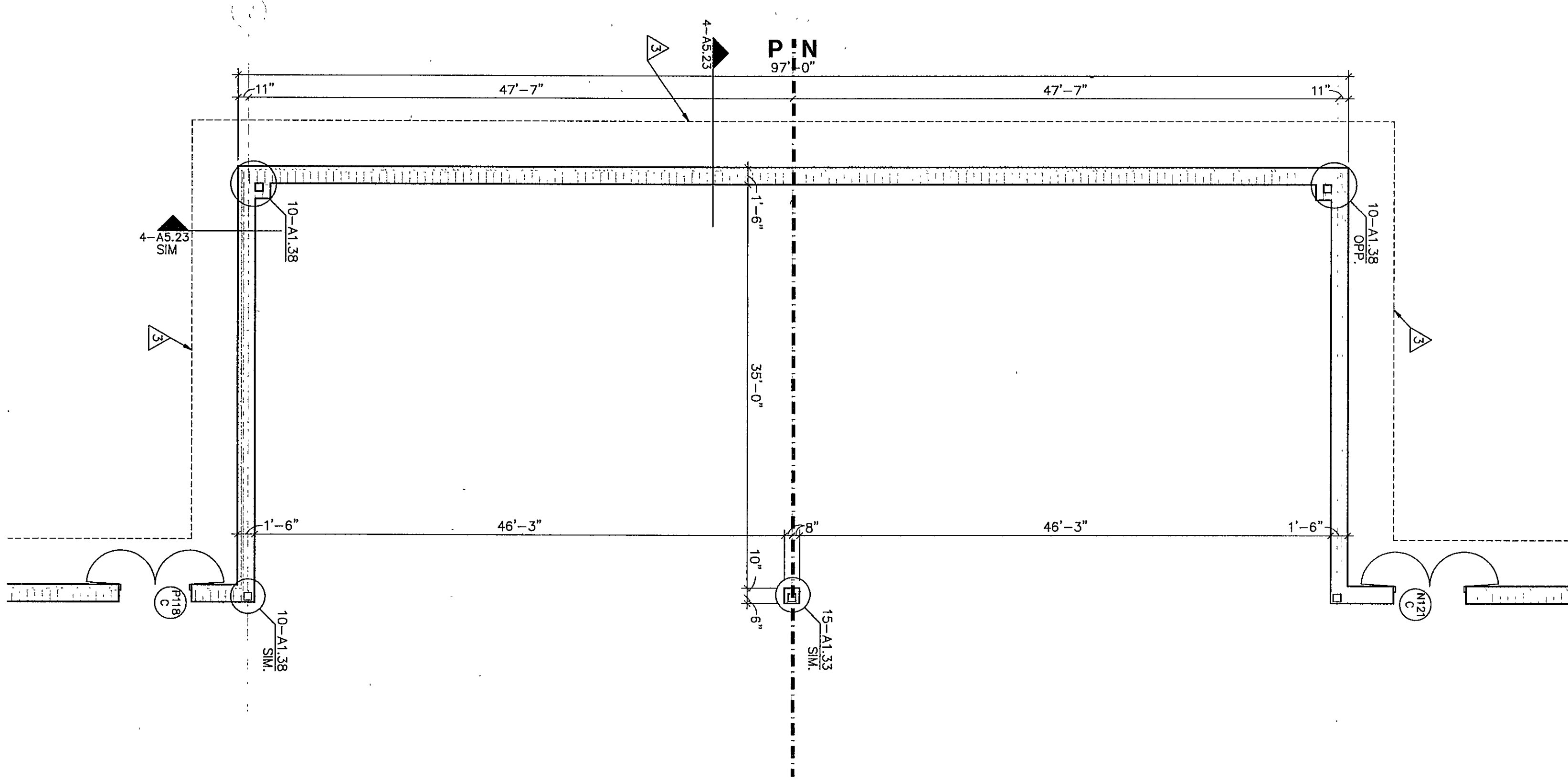
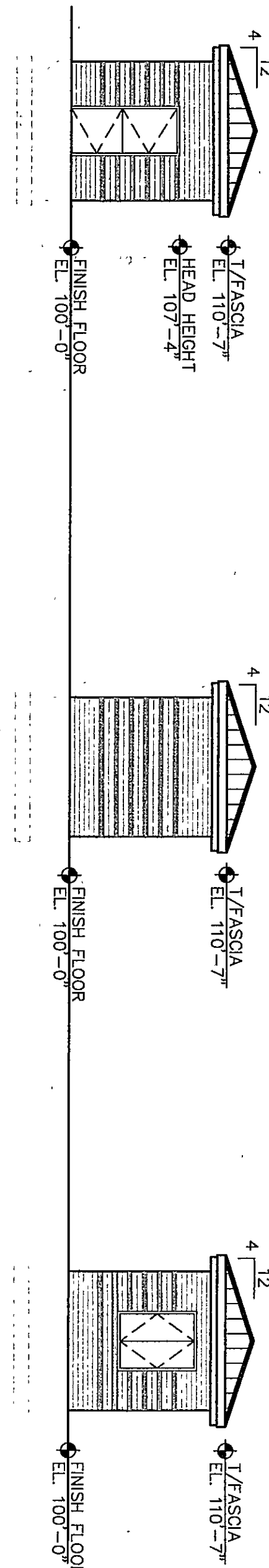
1/8" = 1'-0"

WEST ELEVATION

1/8" = 1'-0"

NORTH ELEVATION

1/8" = 1'-0"



KEY NOTES

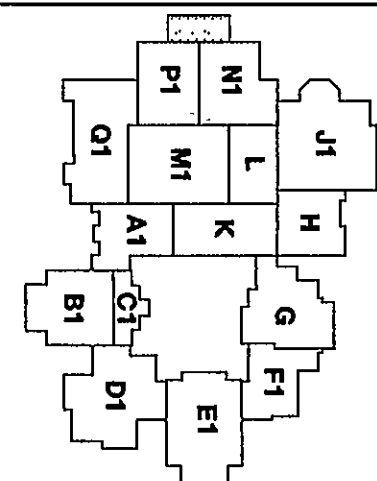
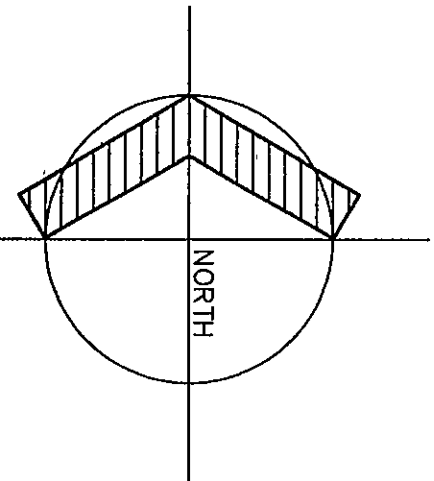
1. INDICATES BLUEHEAD LINE ABOVE - REFER TO SPEC. SEC. 09200.
2. LOCKER BASE - SEE SECTION 5-A7.29
3. INDICATES ROOF OVERHANG - SEE SECTIONS AND DETAILS
4. TYPE I OPERABLE WALL - REFER TO SPEC. SECTION 09200.
5. TYPE II OPERABLE WALL - REFER TO SPEC. SECTION 09200.
6. APPLY PLASTER SOAK COAT OVER CONC. MASONRY UNITS WHERE INDICATED PER SPEC. SEC. 09200.
7. METAL STUDS @ 1'-4" O.C. WITH 3/4" Gypsum BOARD BOTH SIDES - REFER TO SPEC. SEC. 09200.
8. INDICATES CORNER GUARD - REFER TO SPEC. SEC. 10260.
9. INDICATES ADA COMPLIANT SHOWER CURB, REFER TO SECTIONS AND DETAILS 12-A7.29.
10. DISPLAY CASE - REFER TO EQUIPMENT DRAWINGS.
11. LOCKER BENCH/BASE - REFER TO DETAIL 1-A7.30 AND 2-A7.30.
12. INDICATES FLOOR TRENCH PER DETAIL 11-S4.5 AND CASTERWORK.
13. INDICATES POSTER CASE - REFER TO EQUIPMENT DRAWINGS.
14. METAL STUDS @ 1'-4" O.C. W/5/8" Gypsum BOARD ON EXPOSED FACE ONLY - REFER TO SPEC. SECTION 09200.
15. METAL STUDS @ 1'-4" O.C. W/5/8" Gypsum BOARD ON EXPOSED FACE ONLY - REFER TO SPEC. SECTION 09200.
16. BUILT-IN BENCH, REFER TO DETAIL 18-A7.29.
17. INDICATES BUILDING EXPANSION JOINT, REFER TO INDICATED SECTIONS.
18. WIRE MESH PARTITIONS-REFER TO SPEC. SEC. 10660.
19. INDICATES LADDER-REFER TO SPEC. SEC. 05500.
20. LOCKER BASE - SEE SECTION 3-A7.30

FLOOR PLAN NOTES

1. WHERE DIFFERENT FLOOR MATERIALS MEET THEY SHALL MEET UNDER THE CENTERLINE OF THE DOOR, UNLESS NOTED OTHERWISE.
2. WALLS THAT DO NOT LAY OUT IN FULL OR HALF BLOCK LENGTHS SHOULD BE BALANCED SO AS NOT TO NOT TO HAVE PIECES LESS THAN 4" EXPOSED.
3. INTERIOR MASONRY WALLS THAT RUN UP TO THE CEILING SHALL BE CONSTRUCTED WITH 4" RADIUS AT THE CORNER INCLUDING THOSE THAT ARE ADJACENT TO CEILING OR BULKHEAD PLANE, ABOVE THIS PLANE USE CMU W/O BULKHEAD CORNER.
4. SEE DETAILS ON SHEET A1.31 FOR TYPICAL MASONRY CONTROL JOINTS AND EXPANSION JOINTS.
5. SINGLE W/TH MASONRY WALLS ARE INDICATED AT NOMINAL DIMENSIONS.
6. EXPOSED CONCRETE MASONRY UNITS (CMU) CORNERS ARE TO BE CONSTRUCTED USING UNITS WITH A 1" RADIUS BULKHEAD CORNER INCLUDING THOSE THAT ARE ADJACENT TO CEILING OR BULKHEAD PLANE, ABOVE THIS PLANE USE CMU W/O BULKHEAD CORNER.
7. FINISH FLOOR ELEVATION INDICATED FOR THE BUILDING IS 100'-0" REFER TO THE SITE PLAN FOR CORRELATION TO USGS DATUM.
8. SET SHEET A7.26 FOR MOUNTING HEIGHTS.
9. INTERIOR AND EXTERIOR CMU WALLS ARE TO BE CONSTRUCTED WITH 4" RADIUS AT THE CORNER INCLUDING THOSE THAT ARE ADJACENT TO CEILING OR BULKHEAD PLANE, ABOVE THIS PLANE USE CMU W/O BULKHEAD CORNER.
10. ALL DIMENSIONS INDICATED ARE NOMINAL. METAL STUD WALLS ARE DIMENSIONED TO FACE OF STUDS. REFER TO INDICATED PLAN DETAILS OR SECTIONS FOR ACTUAL DIMENSIONS, WHERE INDICATED.
11. UNLESS OTHERWISE NOTED, THE WALL LENGTH FROM THE OUTER FACE OF DOOR/LITE ROUGH OPENING (HENCE THE WALL IS TO BE FOUR INCHES (4") THICK) INTERSECTING WALL IS TO BE FOUR INCHES (4") THICK.
12. REFER TO SHEET A1.3 FOR WALL TYPES.
13. GENERAL NOTE: BUILDING DIMENSIONS ARE TO FACE OF BRICK.
14. GENERAL NOTE: FINISH FLOOR ELEVATION = 100'-0" FOR THE FIRST FLOOR AND 114'-8" FOR THE SECOND FLOOR UNLESS OTHERWISE NOTED.

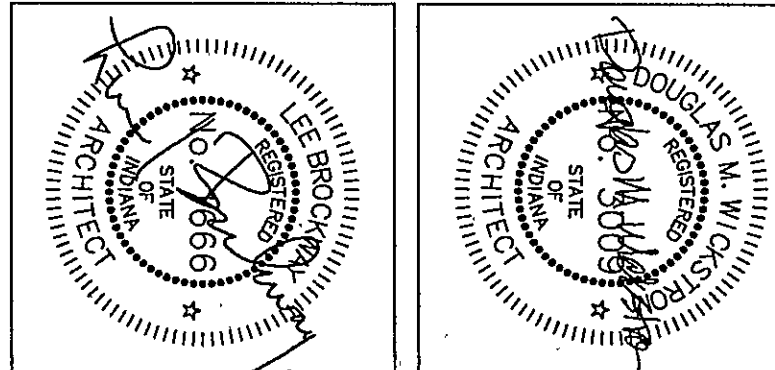
FIELDHOUSE ALTERNATE

1/8" = 1'-0"



THE NEW
CHESTERTON HIGH SCHOOL
FOR THE
DUNELAND SCHOOL CORPORATION
CHESTERTON, INDIANA

COPYRIGHT 1997 BY FANNING/HOWEY ASSOCIATES, INC.



Fanning/Howey Associates, Inc.
Architects Engineers Consultants

FIELDHOUSE ALTERNATE

DRAWN BY: LEC COMM. NO.: 95067.00
CHECKED BY: JHU DATE: APRIL 21, 1997

A1.26

REVISIONS NO. DATE

CHESTERTON HIGH SCHOOL
95067.00