

FLOOR PLAN UNIT "N2"

1/4" = 1'-0"

07-A-25

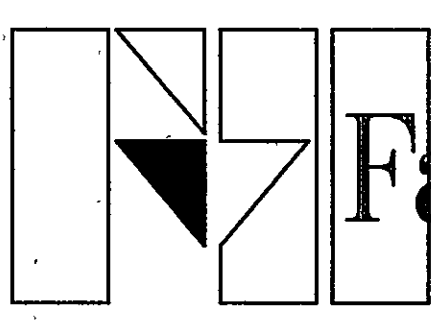
ROOM LEGEND "N2"			
ROOM NO.	NAME	AREA S.F.	CEILING HEIGHT
N201	STAIR	579	10'-8"
N202	MECHANICAL ROOM	2866	---
N203	ELECTRICAL EQUIPMENT	37	---
N205	BALCONY COURT	4681	---

KEY NOTES

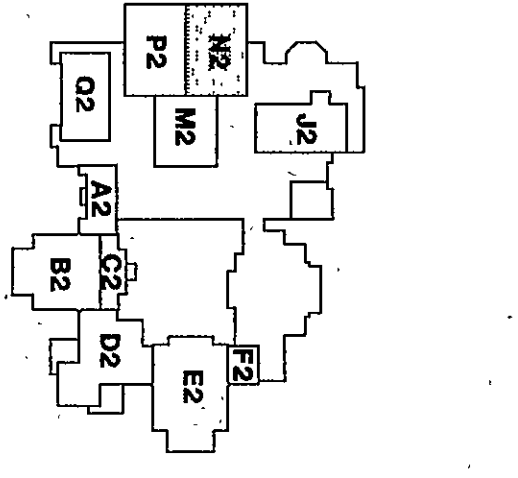
- INDICATES BULKHEAD LINE ABOVE-- REFER TO INDICATED SECTIONS, DETAILS, REFLECTED CEILING PLANS, AND INTERIOR ELEVATIONS.
- LOOKER BASE -- SEE SECTION 5-A7.29
- INDICATES ROOF OVERHANG -- SEE SECTIONS AND DETAILS
- TYPE I OPERABLE WALL -- REFER TO SPEC. SECTION 10650. REFER TO EQUIP. PLANS FOR LOCATIONS OF WALLING SURFACE.
- TYPE II OPERABLE WALL -- REFER TO SPEC. SECTION 10650. REFER TO EQUIP. PLANS FOR LOCATIONS OF WALLING SURFACE.
- APPLY PLASTER S&M COAT OVER CONC. MASONRY.
- METAL STUDS @ 1'-4" O.C. WITH 4" Gypsum BOARD BOTH SIDES. REFER TO SPEC. SEC. 09250. NOTE THAT DIMENSIONS (L.E. 4" x 3" 5/8" METAL STUDS)
- SPEC. SEC. 09250. NOTE THAT DIMENSIONS (L.E. 4" x 3" 5/8" METAL STUDS)
- INDICATES ADA COMPLIANT SHOWER CURB. REFER TO SECTIONS AND DETAILS 12-A7.29.
- DISPLAY CASE -- REFER TO EQUIPMENT DRAWINGS
- LOOKER BENCH/BASE -- REFER TO DETAIL 1-A7.30 AND 2-A7.30.
- INDICATES FLOOR TRENCH PER DETAIL 11-S4.5
- EQUIPMENT DRAWINGS
- INDICATES POSTER CASE -- REFER TO EQUIPMENT DRAWINGS
- METAL STUDS @ 1'-4" O.C. W/5/8" Gypsum BOARD 09250. SEE NOTE 7 ABOVE REGARDING NOMINAL DIMENSIONS.
- METAL STUDS @ 1'-4" O.C. W/5/8" Gypsum BOARD ON EXPOSED FACE, AND 5/8" Gypsum SHEATHING 1-A7.30. ALSO SEE WALL SECTION 1-A7.30.
- BUILT-IN BENCH, REFER TO DETAIL 18-A7.29.
- INDICATES BUILDING EXPANSION JOINT. REFER TO INDICATED SECTIONS.
- WIRE MESH PARTITIONS--REFER TO SPEC. SEC. 10605.
- INDICATES LOOKER--REFER TO SPEC. SEC. 05500.
- LOOKER BASE -- SEE SECTION 3-A7.30

FLOOR PLAN NOTES

- WHERE DIFFERENT FLOOR MATERIALS MEET THEY SHALL MEET UNDER THE CENTRLINE OF THE DOOR, UNLESS NOTED OTHERWISE.
- WALLS THAT DO NOT LAY OUT IN FULL OR HALF BLOCK LENGTHS SHOULD BE BALANCED SO AS NOT TO NOT TO HAVE PIECES LESS THAN 6" EXPOSED.
- INTERIOR MASONRY WALLS THAT RUN UP TO THE CEILING SHALL BE CONSTRUCTED WITH A MINIMUM OF 4" ABOVE THE HIGHEST CEILING TEND A MINIMUM OF 4" ABOVE THE HIGHEST CEILING TEND A MINIMUM OF 4" ABOVE THE HIGHEST CEILING TEND A MINIMUM OF 4" ABOVE THE HIGHEST CEILING TEND
- SEE DETAILS ON SHEET A1.31 FOR TYPICAL MASONRY CONTROL JOINTS AND EXPANSION JOINTS.
- SINGLE WYTHE MASONRY WALLS ARE INDICATED AT NOMINAL DIMENSIONS.
- EXPOSED CONCRETE MASONRY UNITS (CMU) CORNERS ARE TO BE CONSTRUCTED USING UNITS WITH A 1" RADIUS BULLDOSE CORNER INCLUDING THOSE THAT ARE ADJACENT TO CEILING OR BULKHEAD PLANE. ABOVE THIS PLANE USE CMU W/O BULLDOSE CORNER.
- FINISH FLOOR ELEVATION INDICATED FOR THE BUILDING IS 100'-0" REFER TO THE SITE PLAN FOR CORRELATION TO USDS DATUM.
- SEE SHEET A1.26 FOR MOUNTING HEIGHTS.
- INTERIOR AND EXTERIOR CMU WALLS ARE TO BE A MINIMUM OF 4" ABOVE THE HIGHEST CEILING TEND A MINIMUM OF 4" ABOVE THE HIGHEST CEILING TEND A MINIMUM OF 4" ABOVE THE HIGHEST CEILING TEND
- ALL DIMENSIONS UNLESS NOTED ARE NOMINAL. METAL STUD WALLS ARE DIMENSIONED TO FACE OF STUDS. REFER TO INDICATED PLAN DETAILS OR SECTIONS FOR ACTUAL DIMENSIONS, WHERE INDICATED.
- UNLESS OTHERWISE NOTED, THE WALL LENGTH FROM THE OUTER FACE OF DOOR/LITE ROUGH OPENING (HINGE WALL IS TO BE FOUR INCHES (4"))
- REFER TO SHEET A1.3 FOR WALL TYPES.
- GENERAL NOTE: BUILDING DIMENSIONS ARE TO FACE OF BRICK.
- GENERAL NOTE: FINISH FLOOR ELEVATION = 100'-0" FOR THE FIRST FLOOR AND 114'-6" FOR THE SECOND FLOOR UNLESS OTHERWISE NOTED.

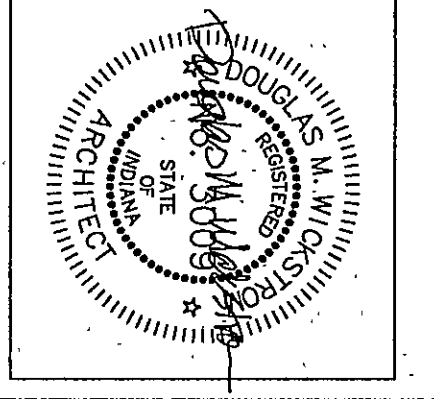
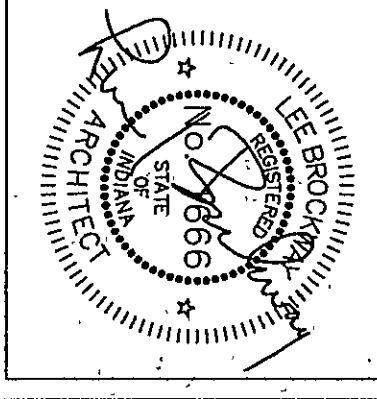


Fanning/Howey
Associates, Inc.
Architects Engineers Consultants



THE NEW
CHESTERTON HIGH SCHOOL
FOR THE
DUNELAND SCHOOL CORPORATION
CHESTERTON, INDIANA

COPYRIGHT 1997 BY FANNING/HOWEY ASSOCIATES, INC.



FLOOR PLAN UNIT N2

DRAWN BY: LEC COMM. NO.: 95067.00
CHECKED BY: JHJ DATE: APRIL 21, 1997

A1.23

REVISIONS NO. DATE

CHESTERTON HIGH SCHOOL
95067.00