

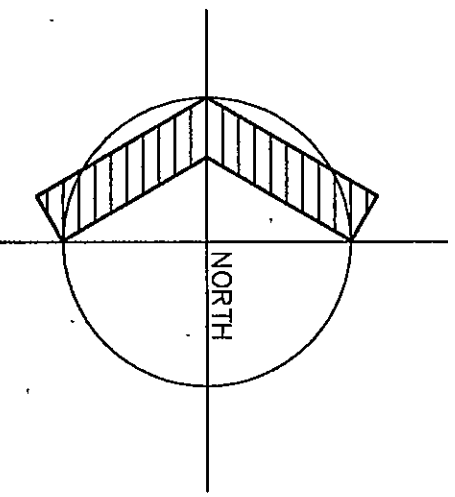
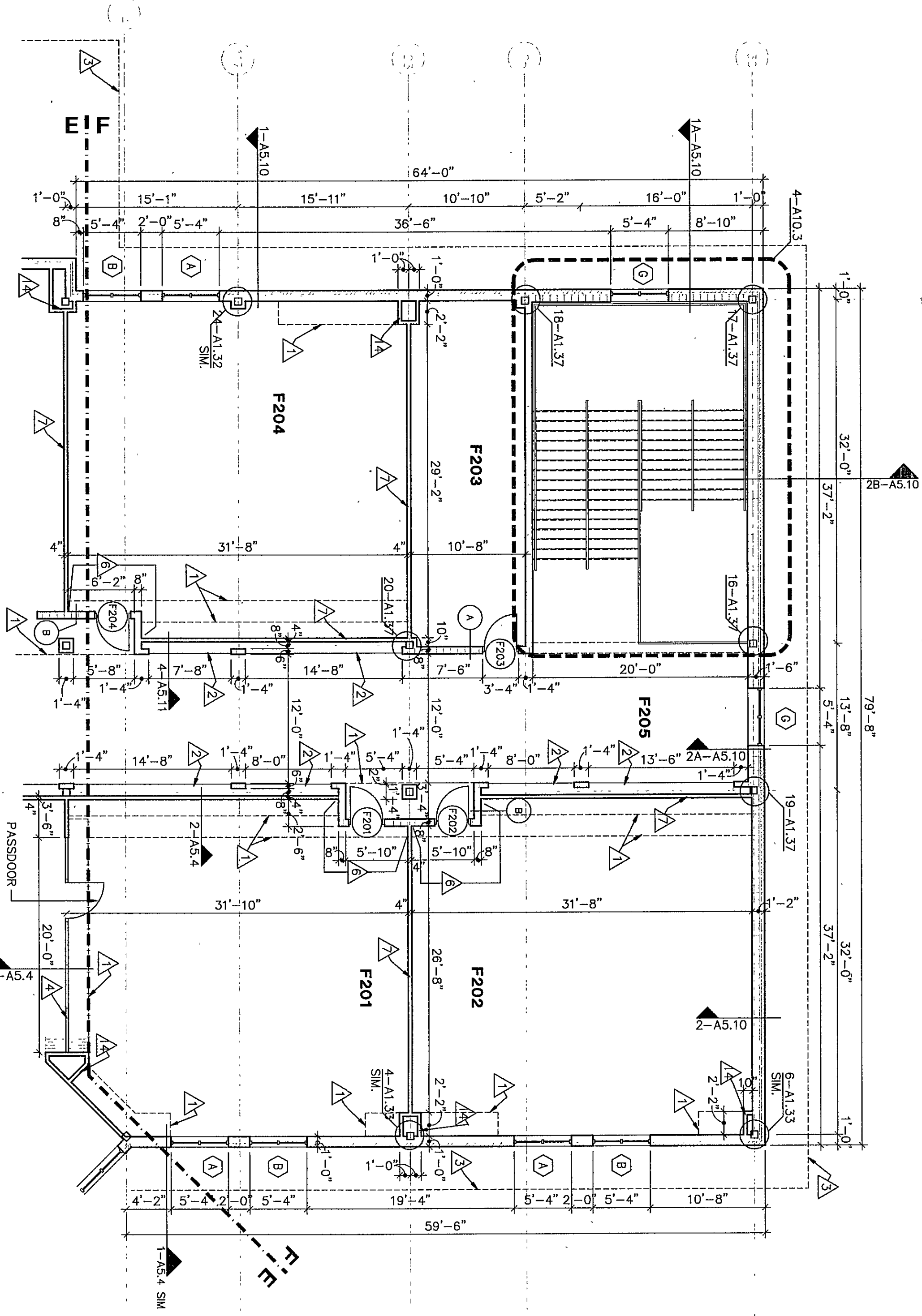
ROOM LEGEND "F2"			
ROOM NO.	NAME	AREA S.F.	CEILING HEIGHT
F201	CLASSROOM	960	VARIABLE
F202	CLASSROOM	972	VARIABLE
F203	CLASSROOM	972	VARIABLE
F204	CLASSROOM	972	VARIABLE
F205	CORRIDOR	823	10'-0"

KEY NOTES

- INDICATES BULKHEAD LINE ABOVE -- REFER TO INDICATED SECTIONS, DETAILS, REFLECTED CEILING PLANS, AND INTERIOR ELEVATIONS.
- LOCKER BASE -- SEE SECTION 5-A7.29
- INDICATES ROOF OVERHANG -- SEE SECTIONS AND DETAILS
- TYPE I OPERABLE WALL -- REFER TO SPEC. SECTION 10650. REFER TO EQUIP. PLANS FOR LOCATIONS OF WRITING SURFACE.
- TYPE II OPERABLE WALL -- REFER TO SPEC. SECTION 10650. REFER TO EQUIP. PLANS FOR LOCATIONS OF WRITING SURFACE.
- APPLY PLASTER SKIN COAT OVER CONC. PER SPEC. 09200.
- METAL STUDS @ 1'-4" O.C. WITH 1/2" GYPSUM BOARD ON EXPOSED FACE ONLY. REFER TO SPEC. SECTION 09250. NOTE 7 ABOVE REGARDING NOMINAL DIMENSIONS.
- INDICATES CORNER GUARD -- REFER TO CORNERS OF PARTITIONS DESCRIBED IN KEYNOTE 7.
- INDICATES ADA COMPLIANT SHOWER CURB. REFER TO SECTIONS AND DETAILS 12-A7.29.
- DISPLAY CASE -- REFER TO EQUIPMENT DRAWINGS.
- LOCKER BENCH/BASE -- REFER TO DETAIL 1-A7.30 AND 2-A7.30.
- INDICATES FLOOR TRENCH PER DETAIL 11-54.5 COORDINATE LOCATIONS WITH FLOOR FINISHES AND CASEWORK.
- INDICATES POSTER CASE -- REFER TO EQUIPMENT DRAWINGS.
- METAL STUDS @ 1'-4" O.C. W/5/8" GYPSUM BOARD ON EXPOSED FACE ONLY. REFER TO SPEC. SECTION 09250. NOTE 7 ABOVE REGARDING NOMINAL DIMENSIONS.
- METAL STUDS @ 1'-4" O.C. W/5/8" GYPSUM BOARD ON EXPOSED FACE, AND 5/8" GYPSUM SHEATHING TOWARD BRICK FACE. ALSO SEE WALL SECTION 1-A7.30.
- BUILT-IN BENCH, REFER TO DETAIL 18-A7.29.
- INDICATES BUILDING EXPANSION JOINT. REFER TO INDICATED SECTIONS.
- WIRE MESH PARTITIONS--REFER TO SPEC. SEC. 10605.
- INDICATES LADDER--REFER TO SPEC. SEC. 04550.
- LOCKER BASE -- SEE SECTION 3-A7.30

FLOOR PLAN NOTES

- WHERE DIFFERENT FLOOR MATERIALS MEET THEY SHALL MEET UNDER THE CENTRINE OF THE DOOR, UNLESS NOTED OTHERWISE.
- WALLS THAT DO NOT LAY OUT IN FULL OR HALF DIMENSIONS SHALL BE SHOWN AS SUCH. NOT TO NOT TO HAVE PIECES LESS THAN 4" EXPOSED.
- INTERIOR MASONRY WALLS THAT RUN UP TO THE CEILING SHALL BE SHOWN AS SUCH. NOT TO NOT TO HAVE PIECES LESS THAN 4" EXPOSED.
- SEE DETAILS ON SHEET A1.31 FOR TYPICAL MASONRY CONTROL JOINTS AND EXPANSION JOINTS.
- SINGLE WYTHE MASONRY WALLS ARE INDICATED AT NOMINAL DIMENSIONS.
- EXPOSED CONCRETE MASONRY UNITS (CMU) CORNERS ARE TO BE CONSTRUCTED USING UNITS WITH A 1" RADIUS TO LOCKERS. USE BALANCE CORNER UP TO UNDERSIDE OF CEILING OR BULKHEAD PLANE. ABOVE THIS PLANE USE CMU W/O BALANCE CORNER.
- FINISH FLOOR ELEVATION INDICATED FOR THE BUILDING IS 100'-0". REFER TO THE SITE PLAN FOR CORRELATION TO USDS DATUM.
- SEE SHEET A7.26 FOR MOUNTING HEIGHTS.
- INTERIOR AND EXTERIOR CMU WALLS ARE TO BE CONSTRUCTED USING UNITS WITH A 1" RADIUS TO LOCKERS. USE BALANCE CORNER UP TO UNDERSIDE OF CEILING OR BULKHEAD PLANE. ABOVE THIS PLANE USE CMU W/O BALANCE CORNER.
- ALL DIMENSIONS INDICATED ARE NOMINAL. METAL STUD WALLS ARE DIMENSIONED TO FACE OF STUDS. REFER TO INDICATED PLAN DETAILS OR SECTIONS FOR ACTUAL DIMENSIONS, WHERE INDICATED.
- UNLESS OTHERWISE NOTED, THE WALL LENGTH FROM THE END OF THE STUD TO THE END OF THE STUD ON THE SIDE OF DOOR FRAMES TO THE NEAREST INTERSECTING WALL IS TO BE FOUR INCHES. (4")
- GENERAL NOTE: BUILDING DIMENSIONS ARE TO FACE OF BRICK.
- GENERAL NOTE: FINISH FLOOR ELEVATION = 100'-0" FOR THE FIRST FLOOR AND 114'-8" FOR THE SECOND FLOOR UNLESS OTHERWISE NOTED.



FLOOR PLAN UNIT "F2"

1/8" = 1'-0"

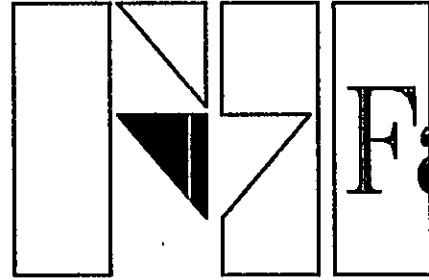
07-A-15

FLOOR PLAN UNIT F2

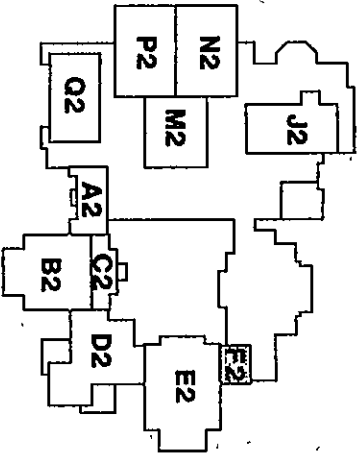
DRAWN BY: LEC COMM. NO.: 95067.00
CHECKED BY: JHJ DATE: APRIL 21, 1997

A1.13

REVISIONS NO. DATE

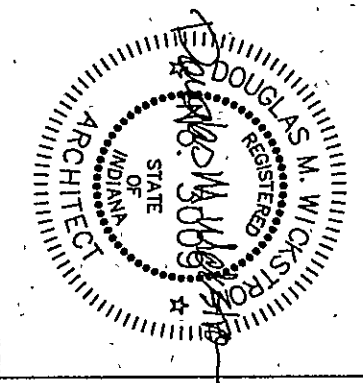
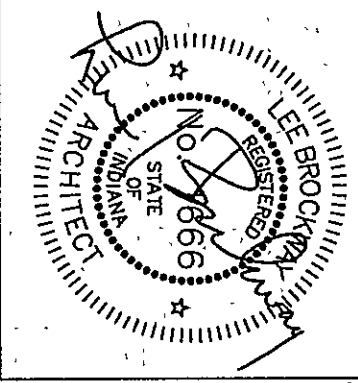


Fanning/Howey Associates, Inc.
Architects Engineers Consultants



THE NEW
CHESTERTON HIGH SCHOOL
FOR THE
DUNELAND SCHOOL CORPORATION
CHESTERTON, INDIANA

COPYRIGHT 1997 BY FANNING/HOWEY ASSOCIATES, INC.



CHESTERTON HIGH SCHOOL
5509/00