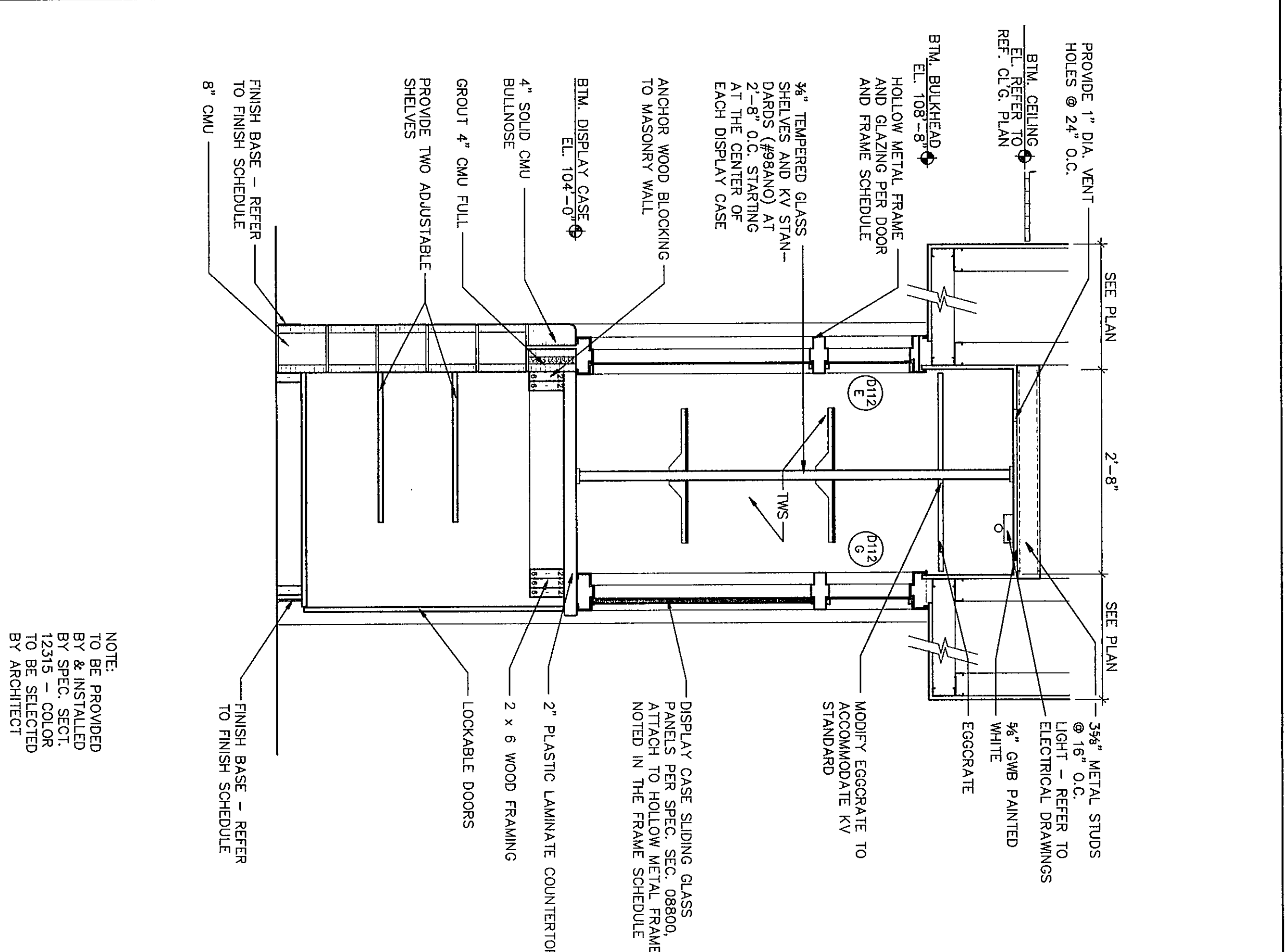
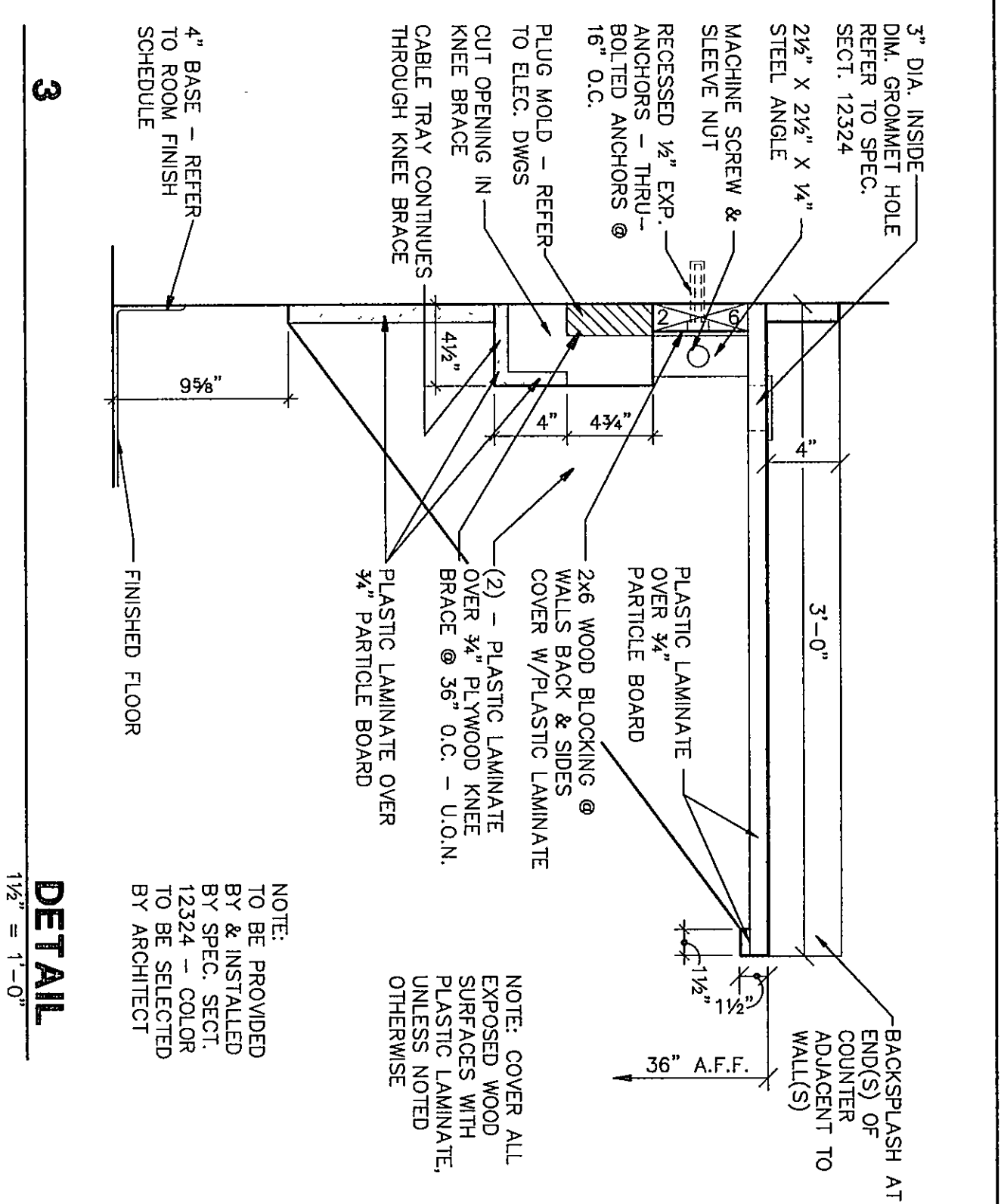


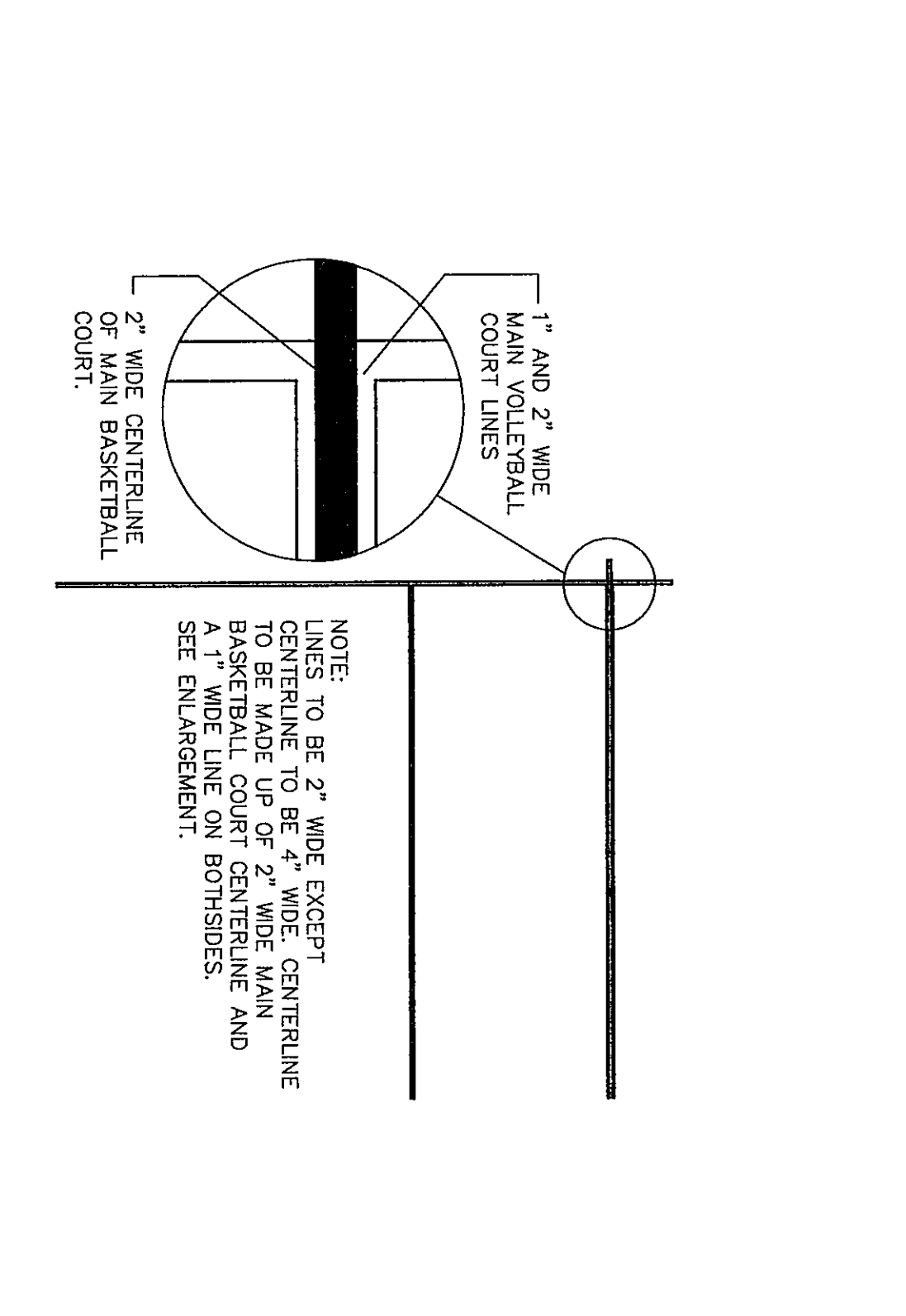
1
DISPLAY CASE DETAIL
1/4" = 1'-0"



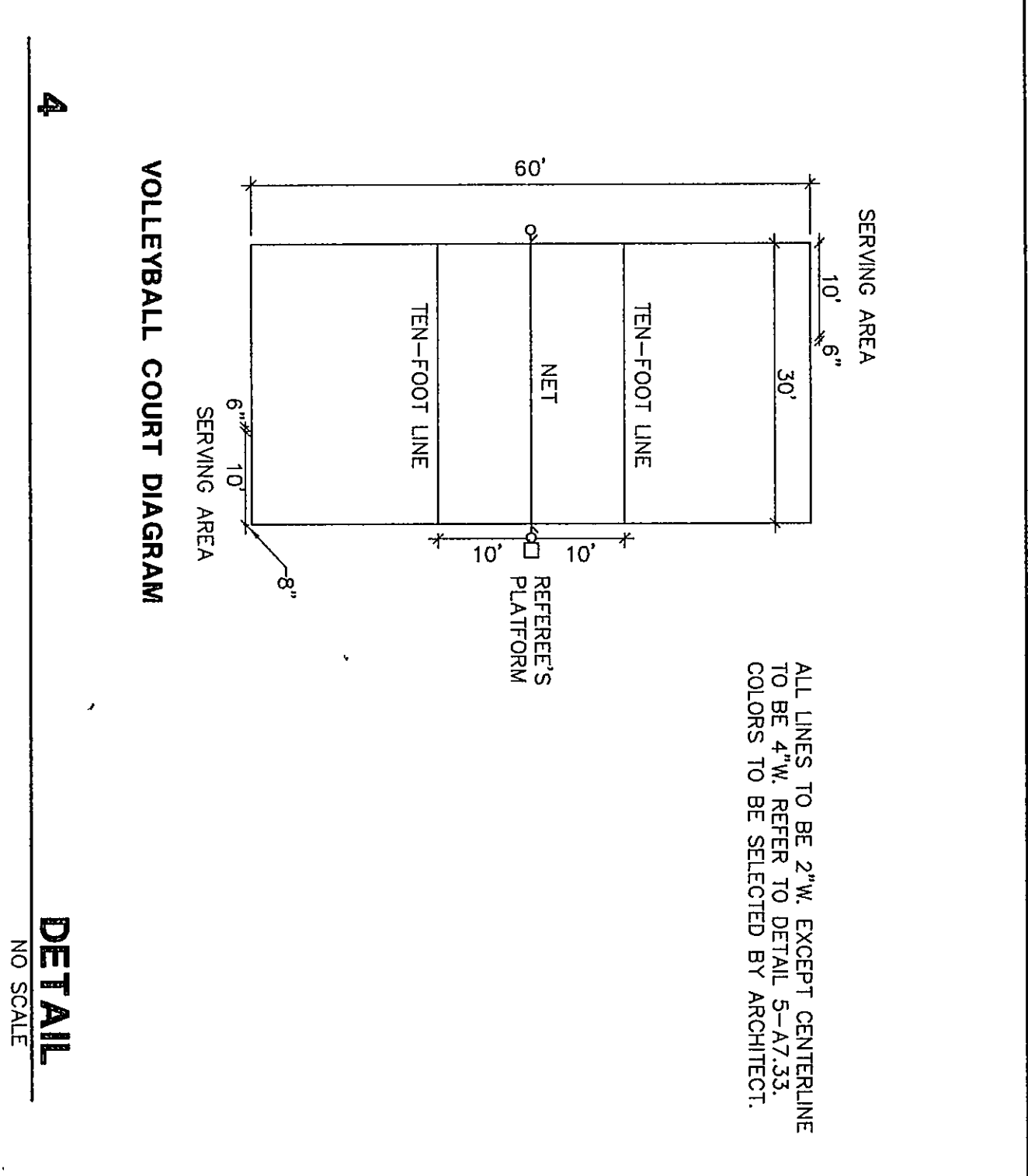
2
DISPLAY CASE DETAIL
1/4" = 1'-0"



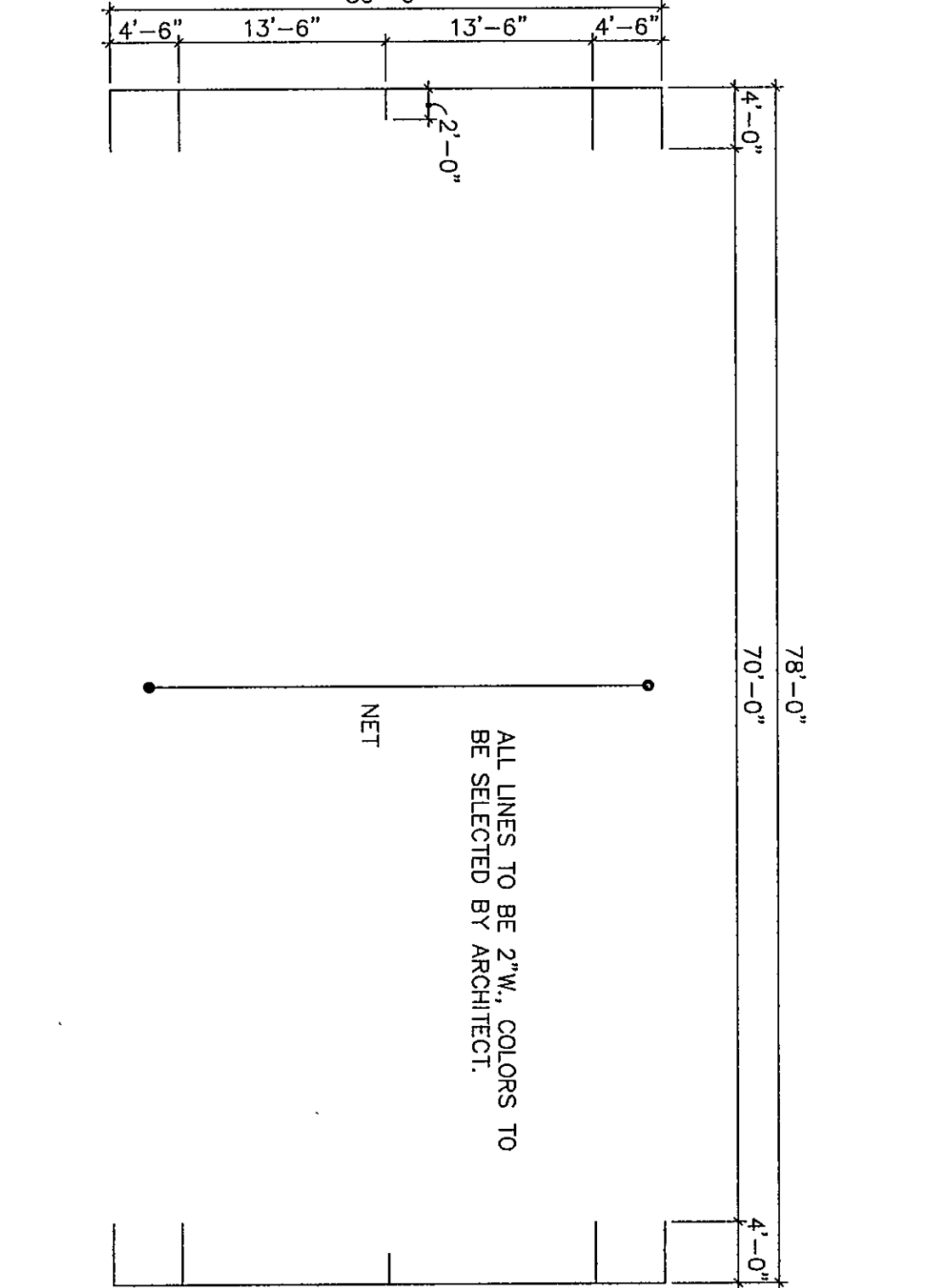
3
DETAIL
1/2" = 1'-0"



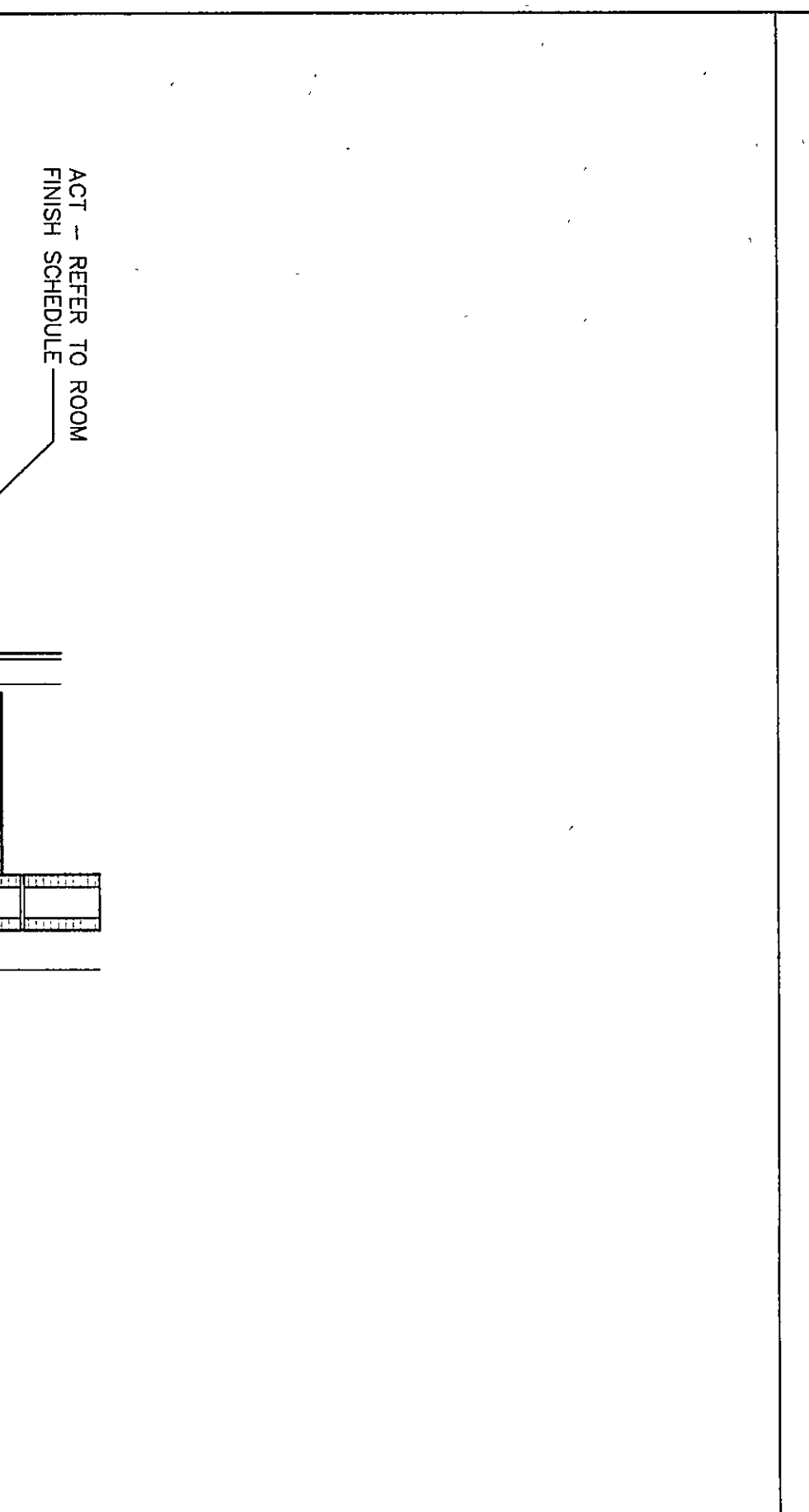
5
DETAIL
1/8" = 1'-0"



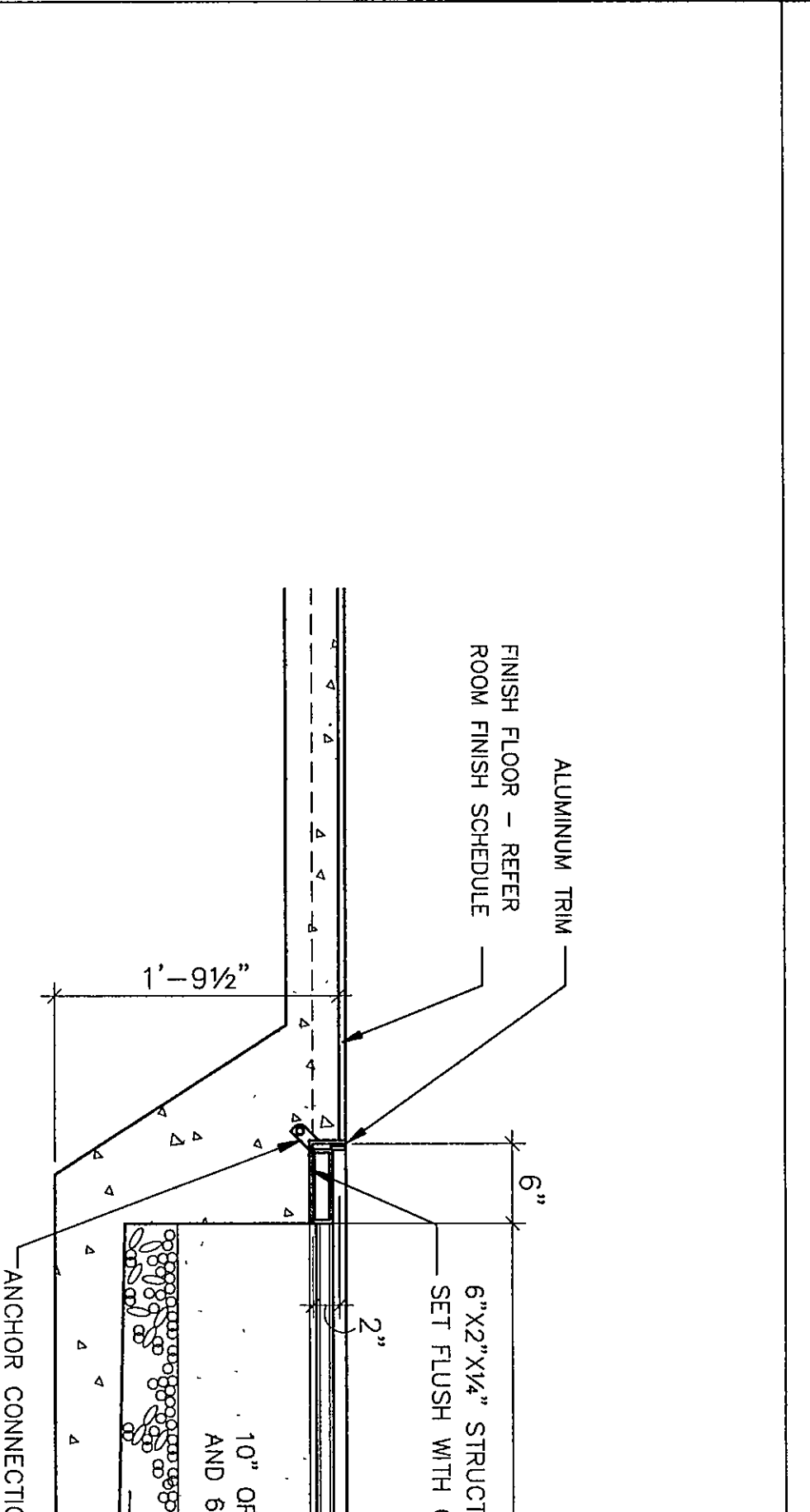
4
VOLLEYBALL COURT DIAGRAM
DETAIL
NO SCALE



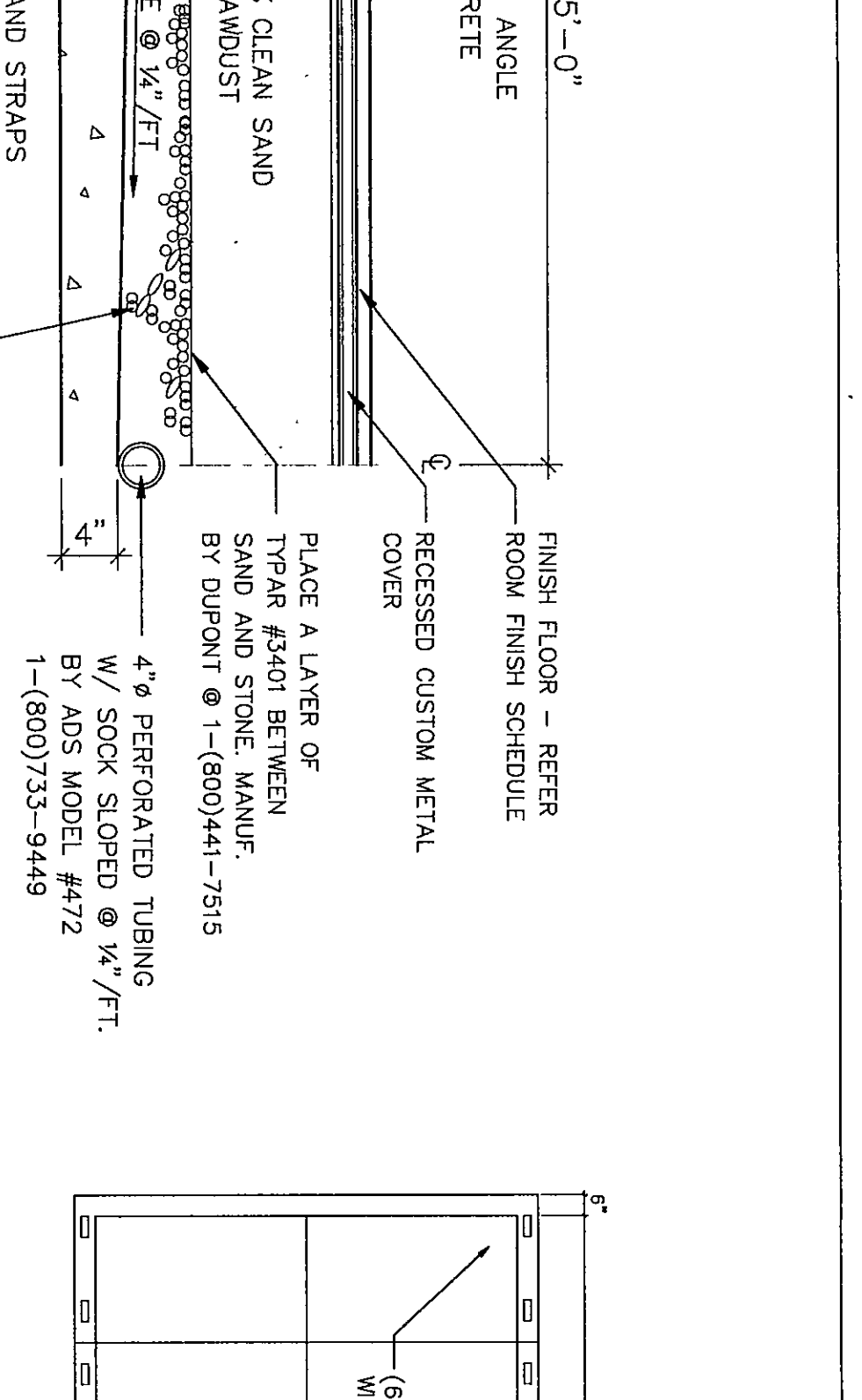
6
TENNIS COURT DIAGRAM
DETAIL
NO SCALE



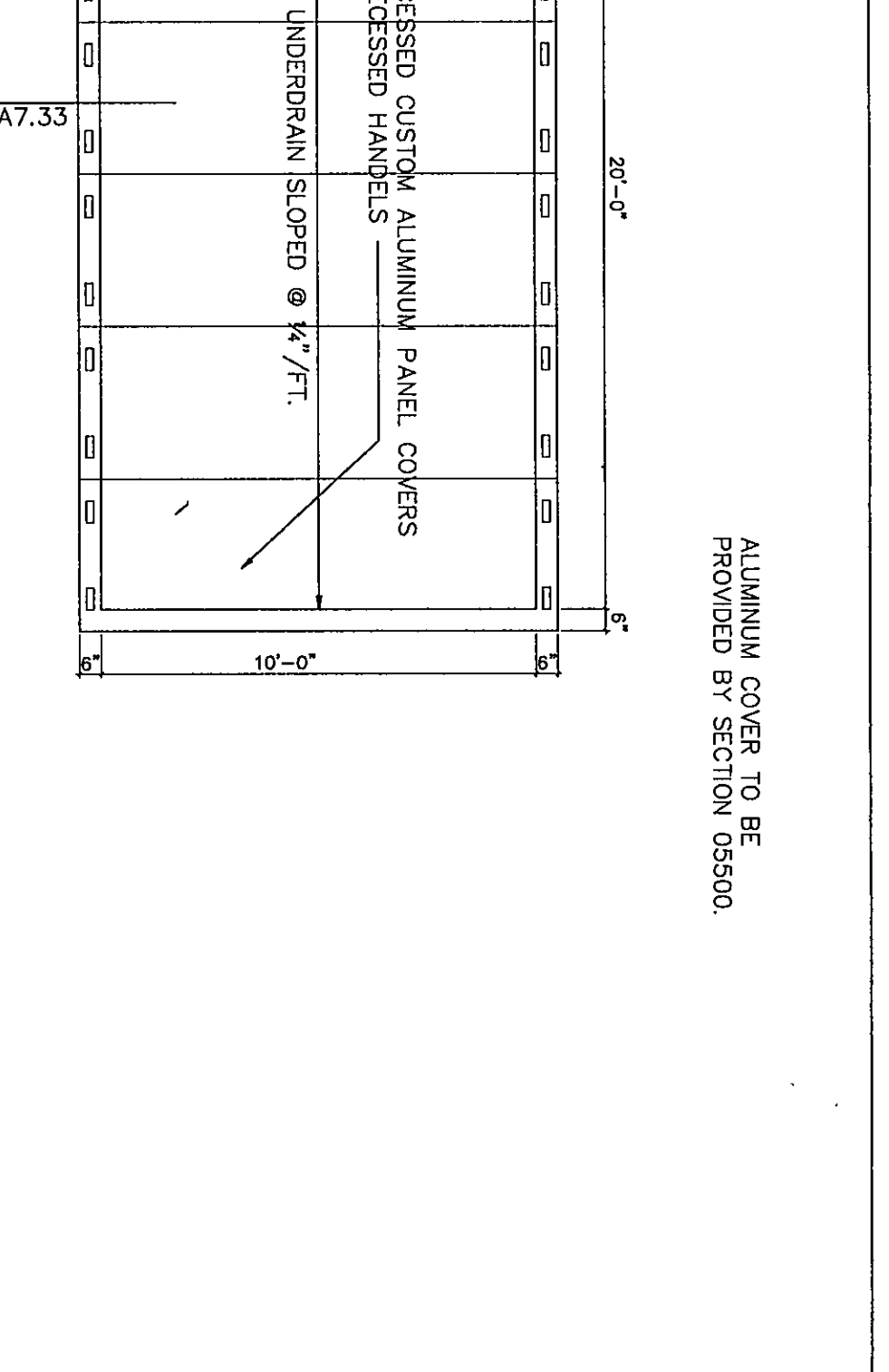
7
DETAIL
1/4" = 1'-0"



8
SECTION A
1" = 1'-0"



10
DETAIL
1/4" = 1'-0"



11
ELEVATION
1/4" = 1'-0"

MISCELLANEOUS DETAILS			
DRAWN BY: SB	COMM. NO.: 95067.00		
CHECKED BY: JHJ	DATE: APRIL 21, 1997		
REVISIONS NO. DATE			
A7.33			

Fanning/Howey Associates, Inc.
Architects Engineers Consultants

THE NEW
CHESTERTON HIGH SCHOOL
FOR THE
DUNELAND SCHOOL CORPORATION
CHESTERTON, INDIANA

