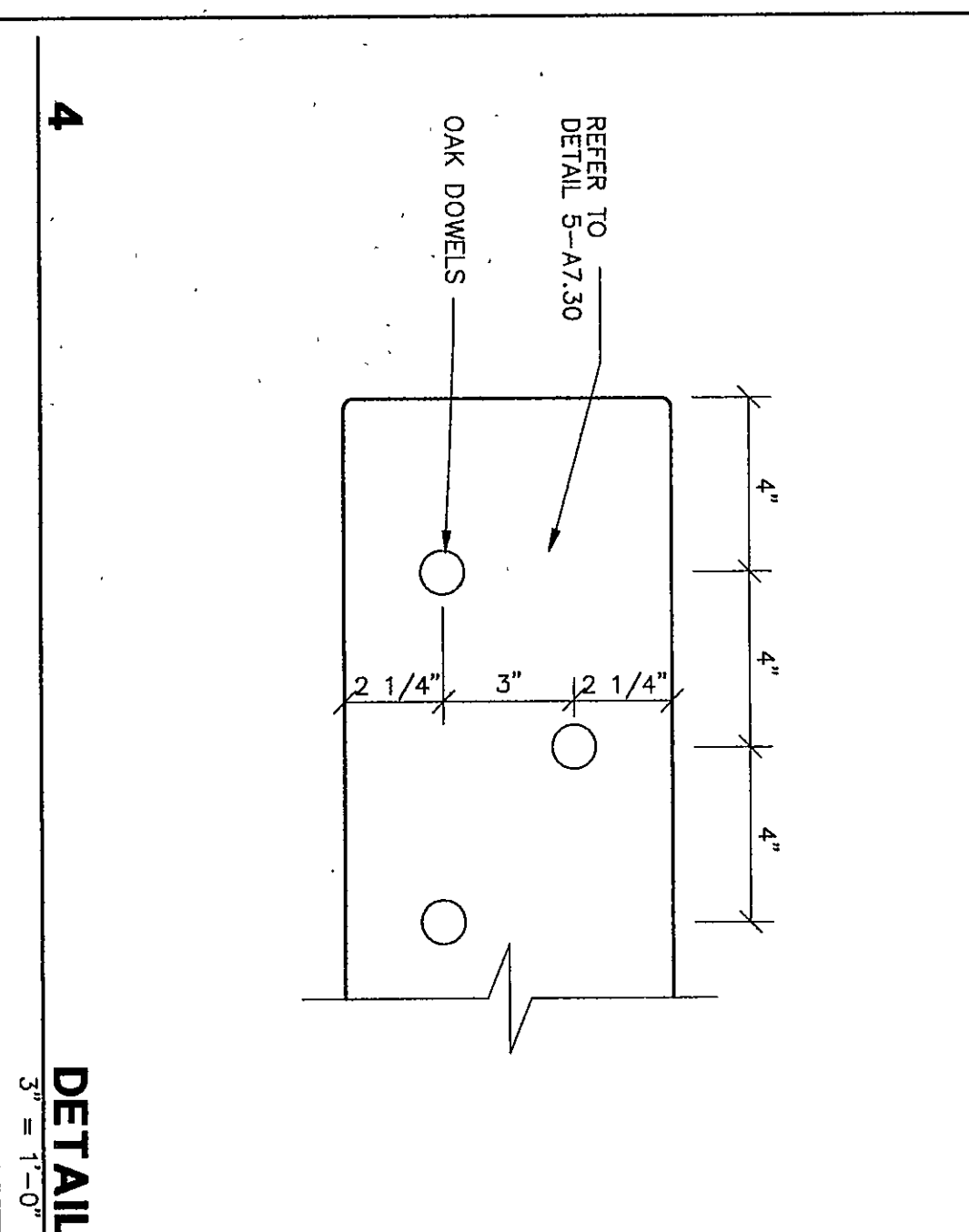
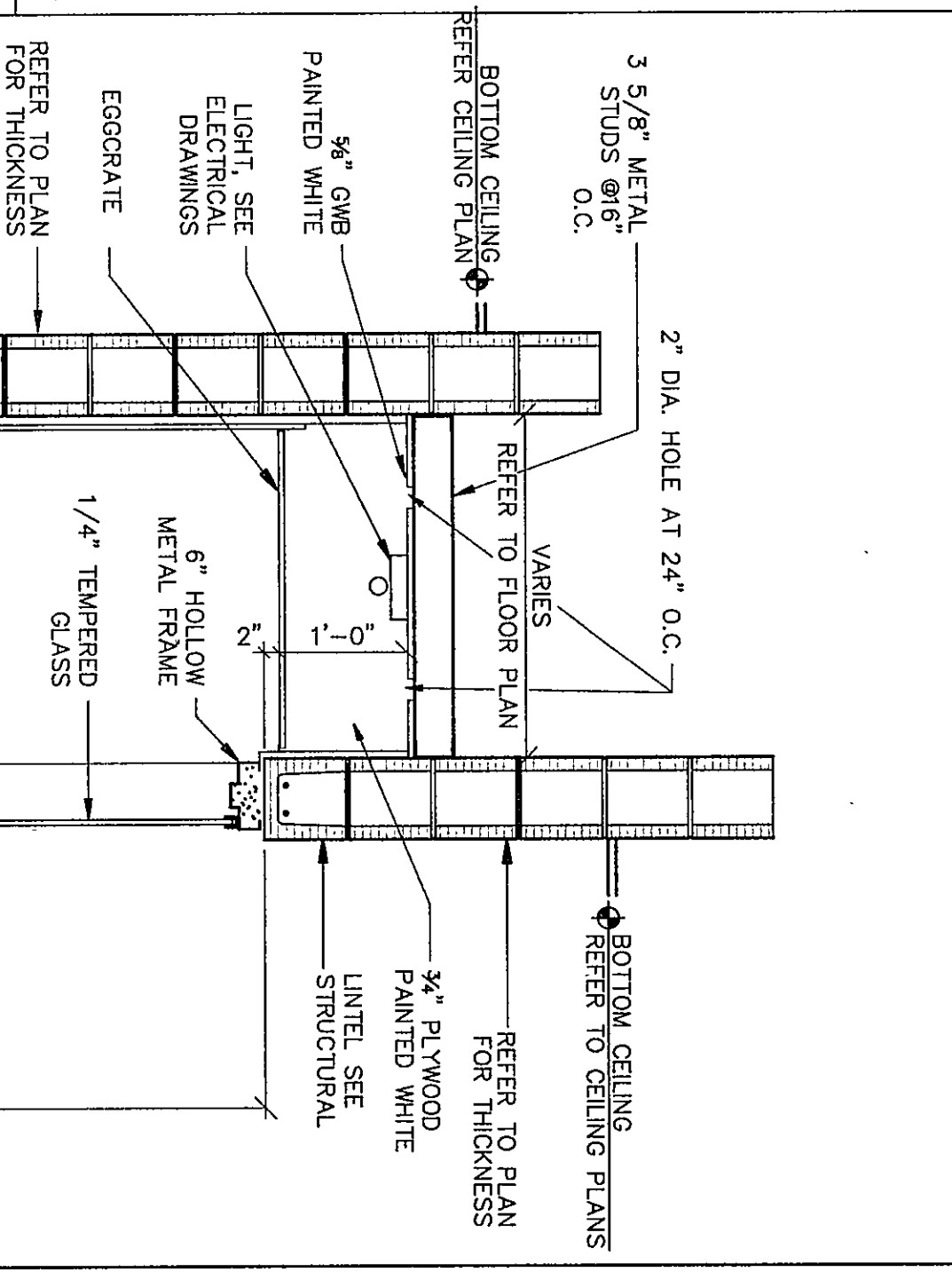
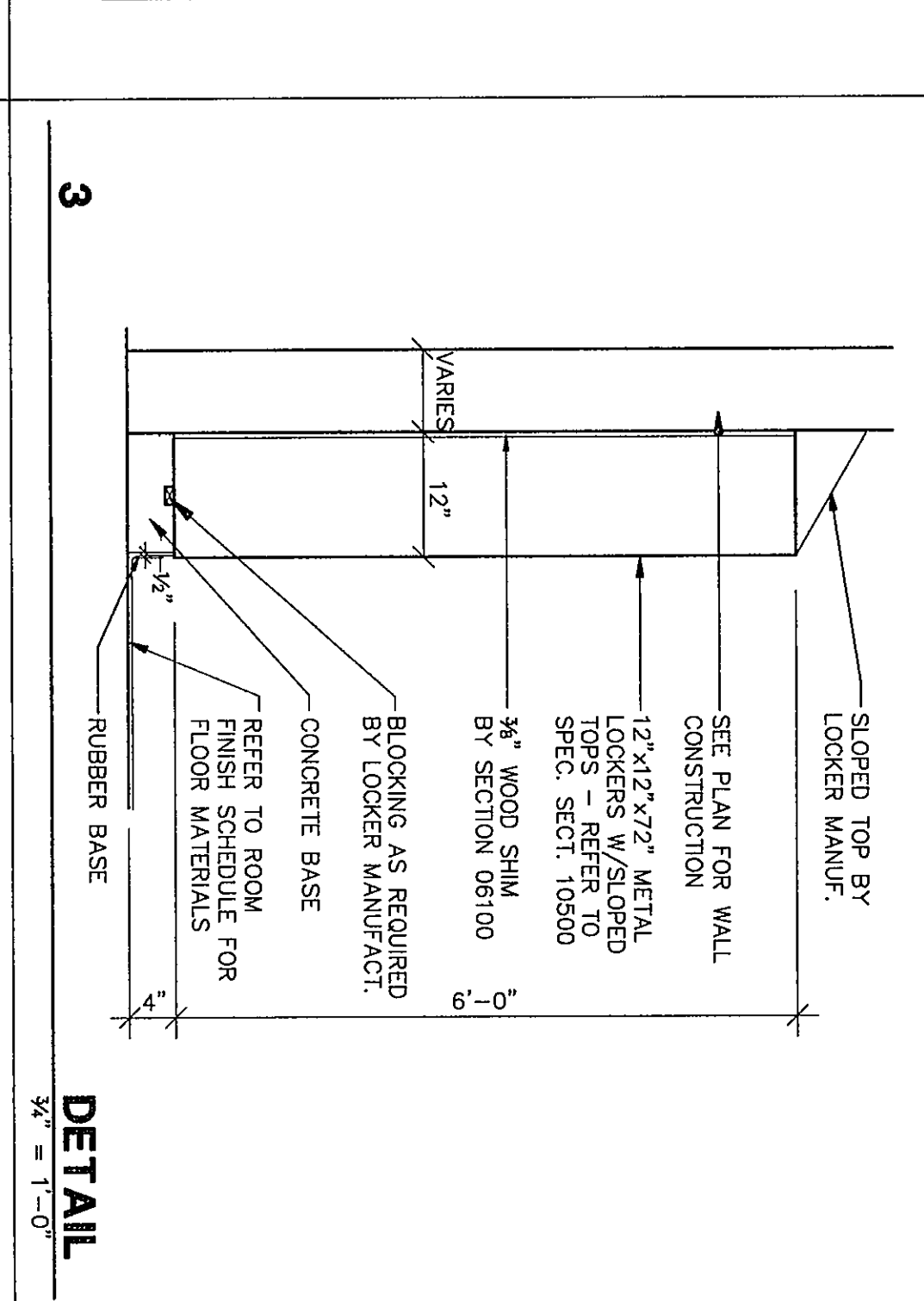
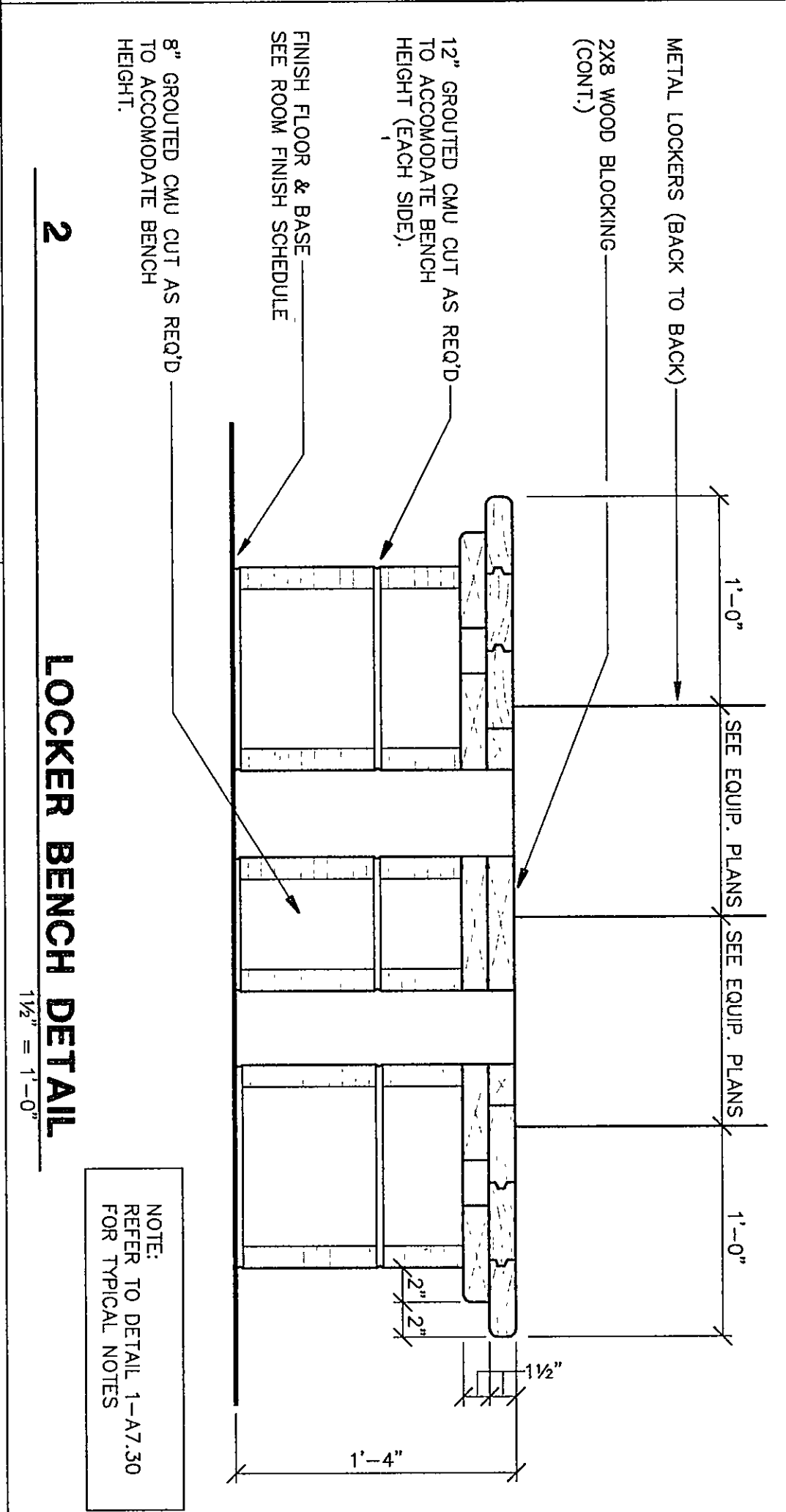
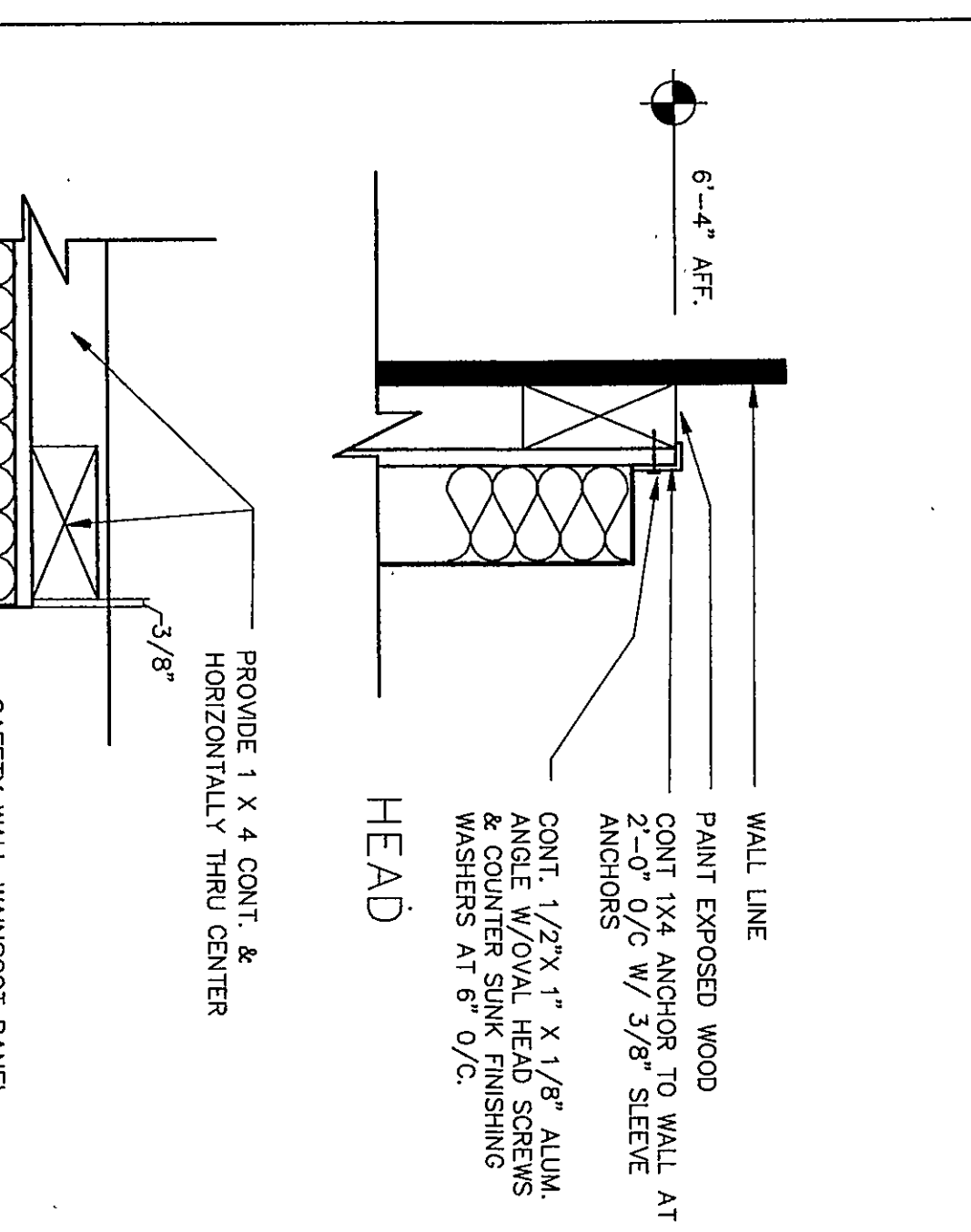
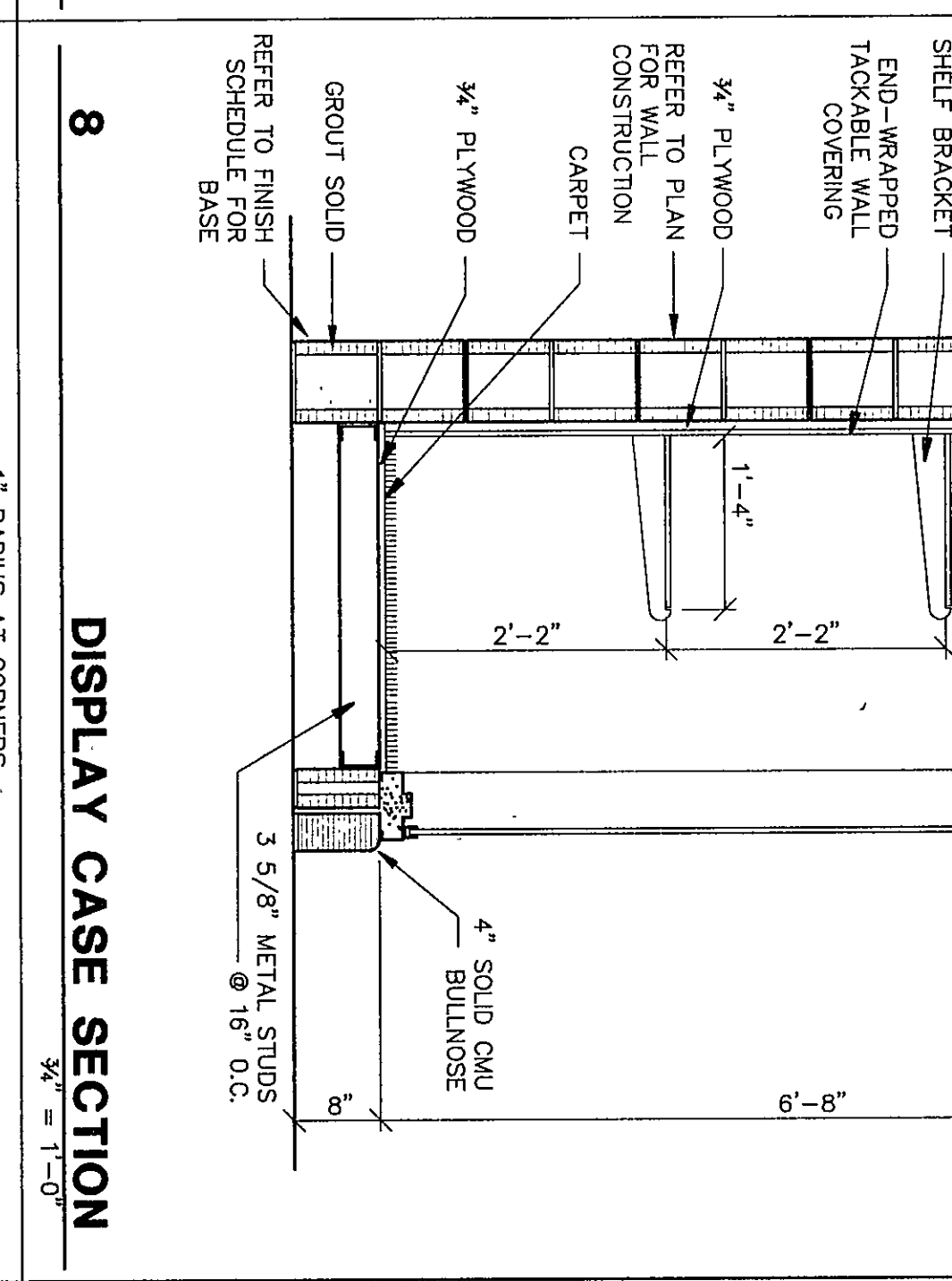
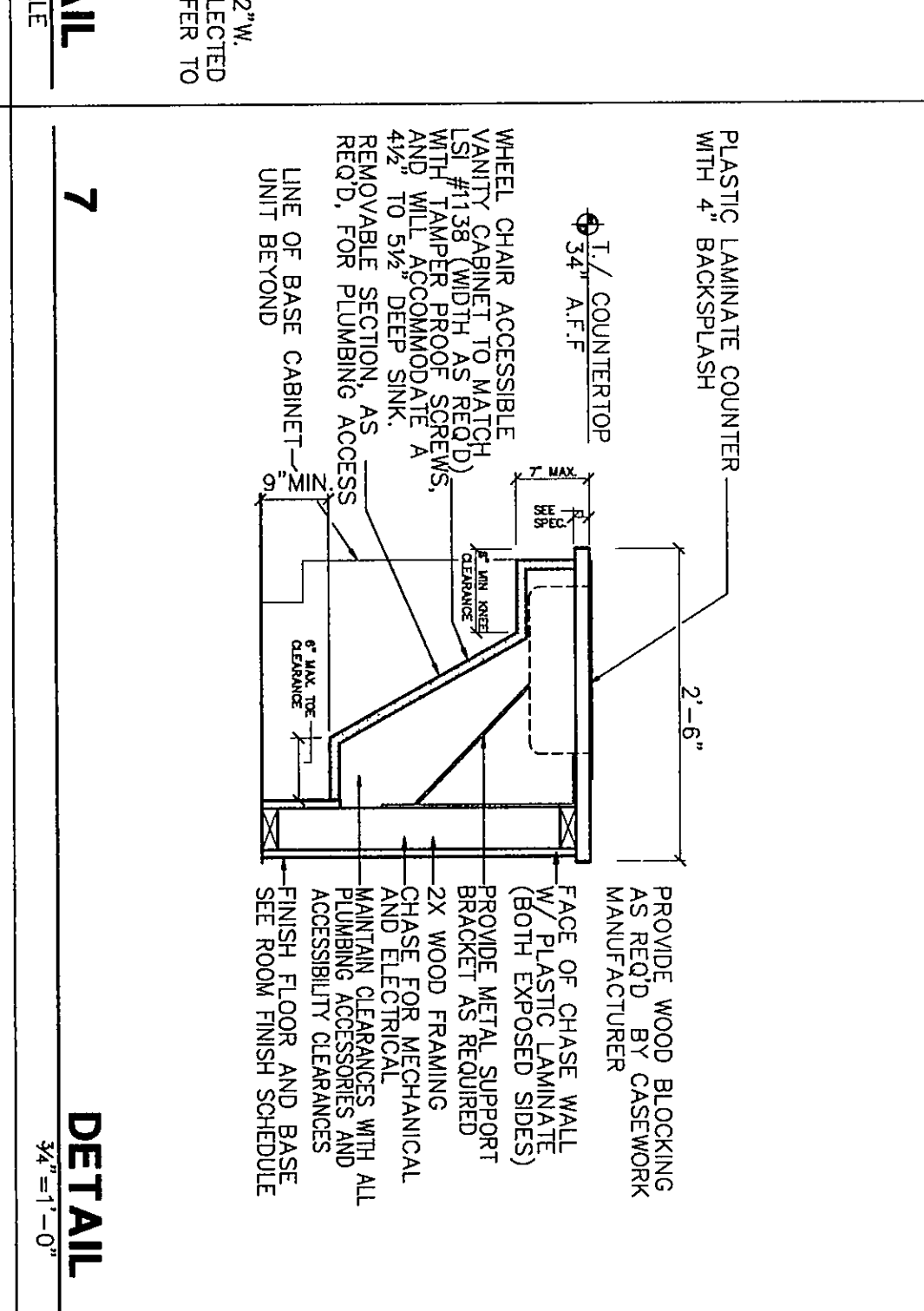
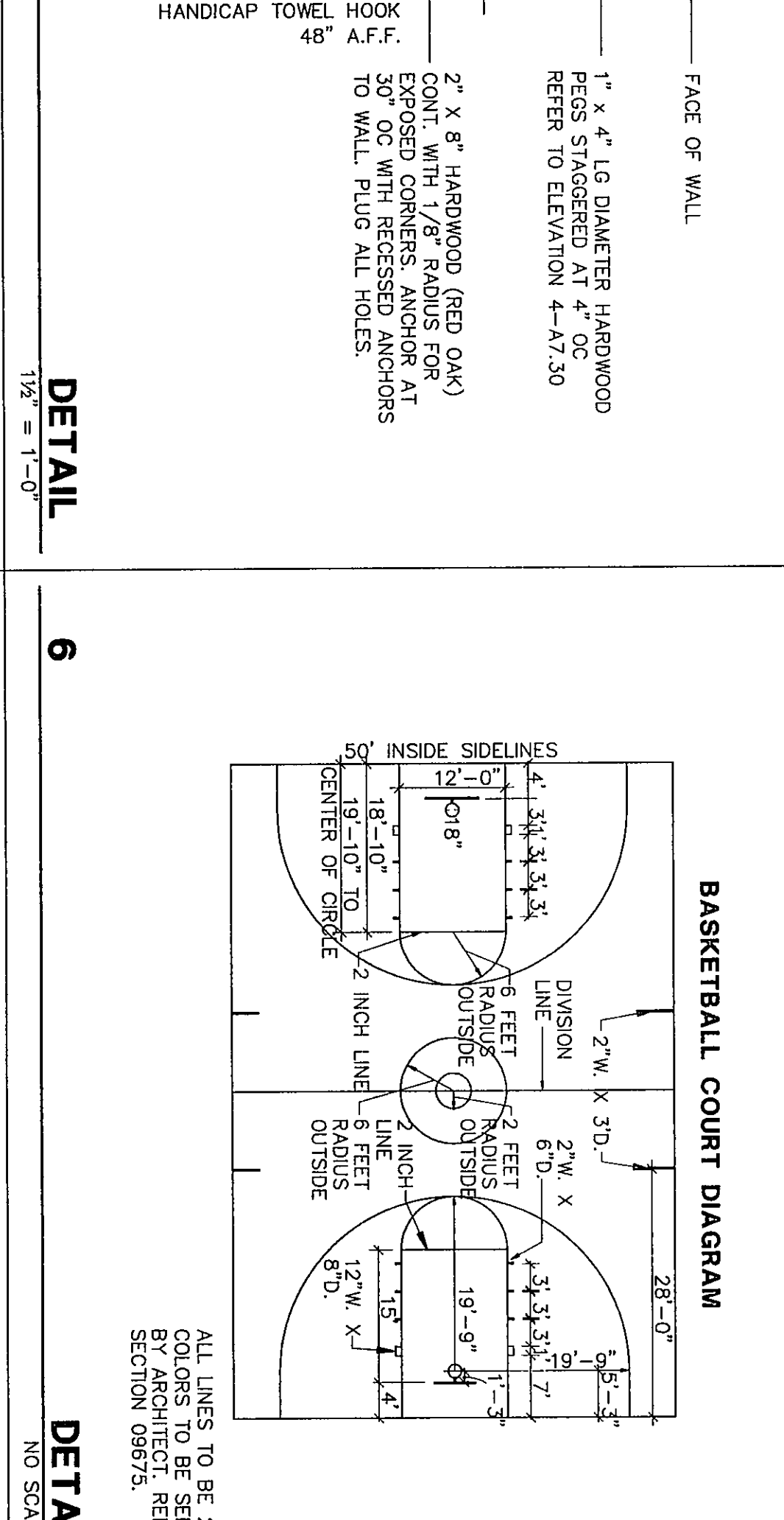


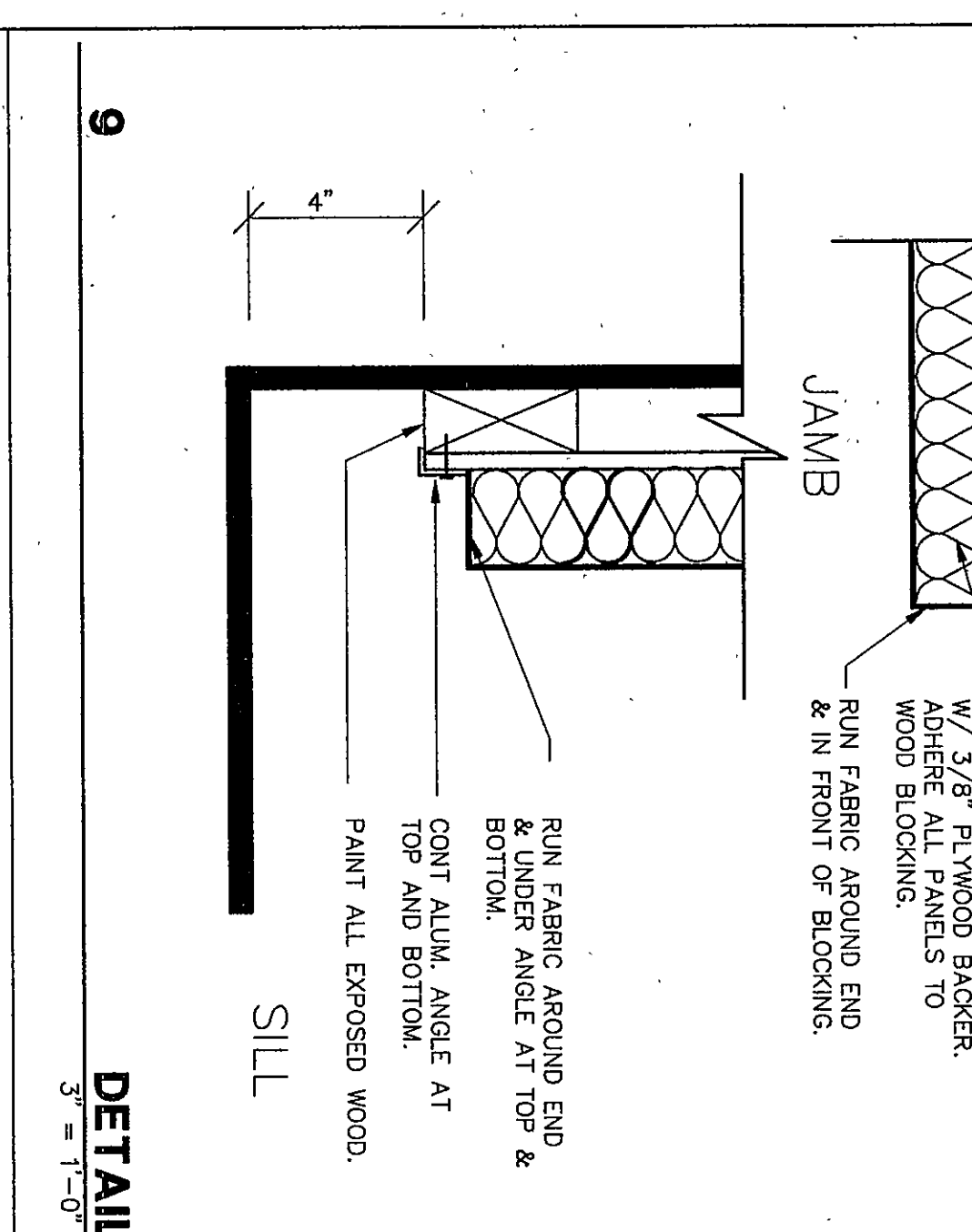
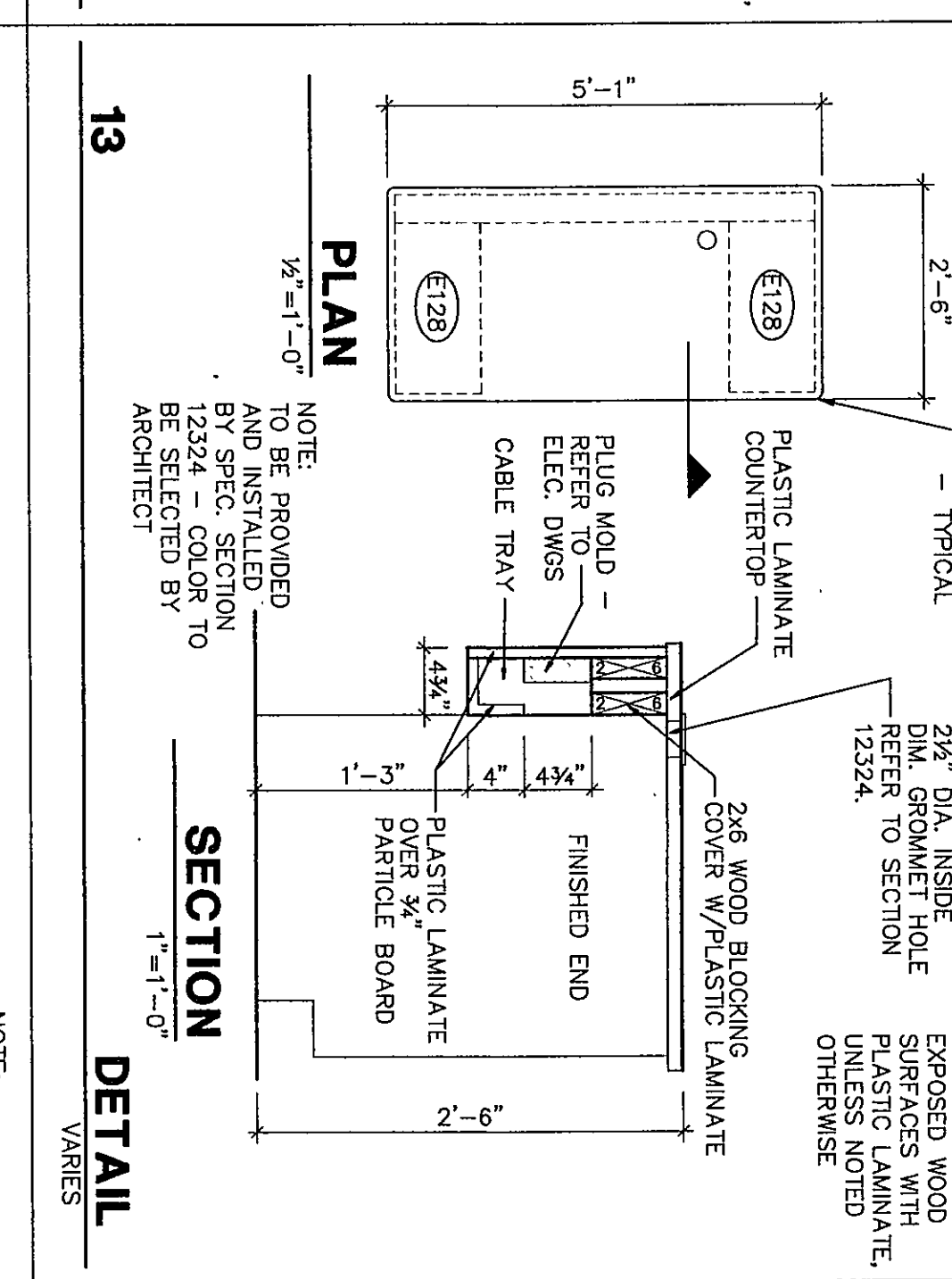
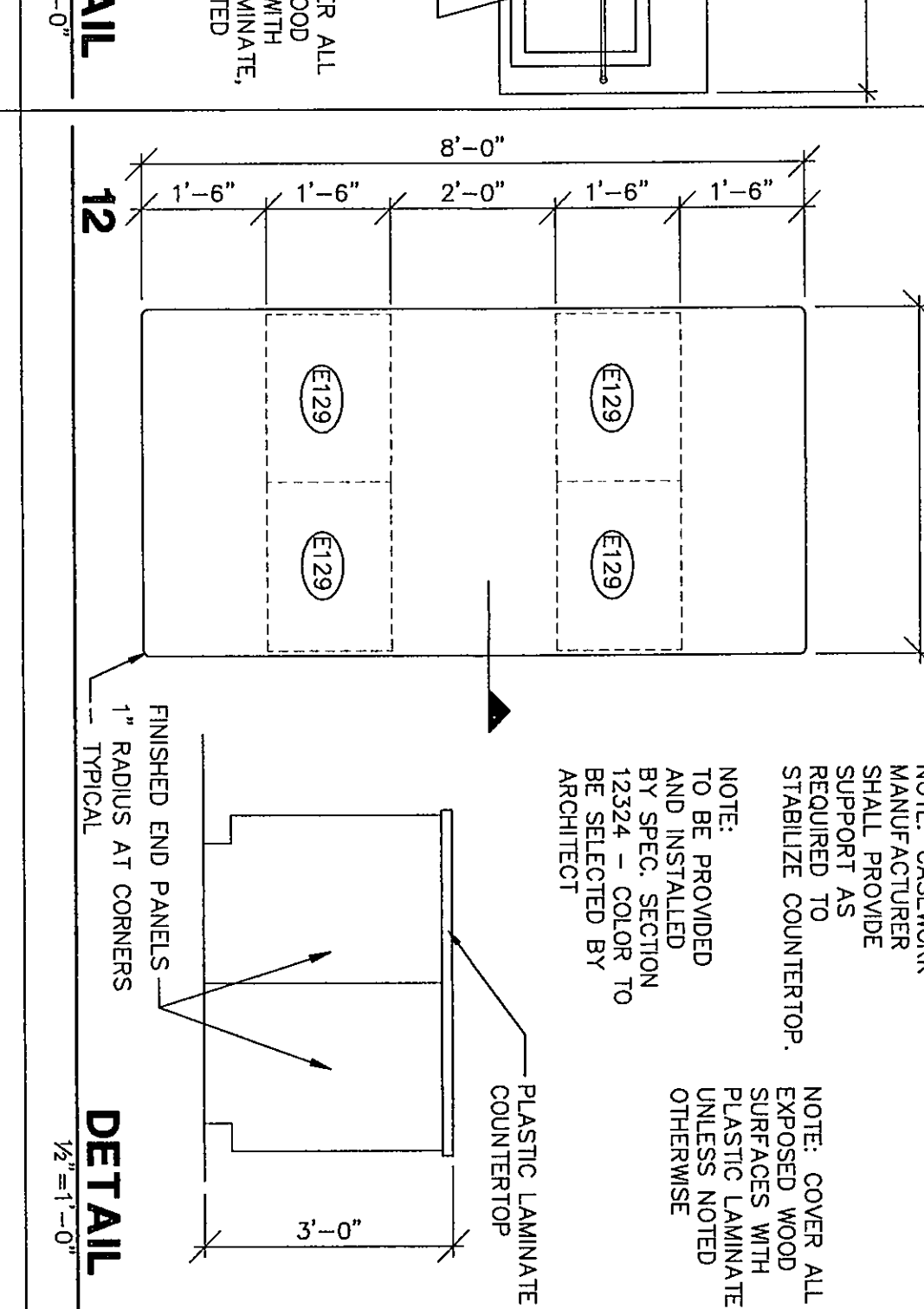
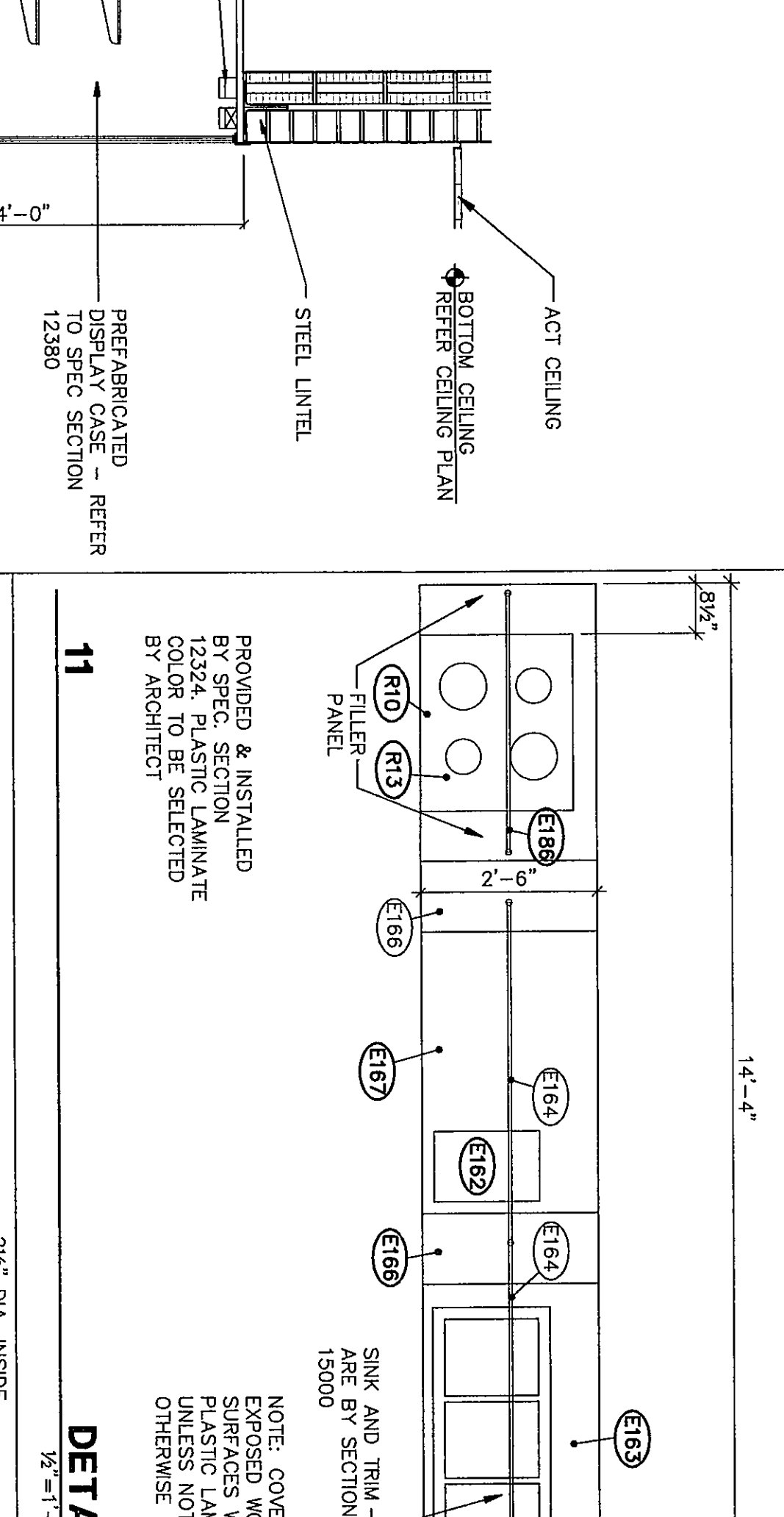
CONTINUOUS 2X HARDWOOD LAMINATED PLANKS GLUED TOGETHER USING TYPE 1 EPOXY ADHESIVE. PLANKS TO BE BASED PLANS TO BE FASTENED TO BE BLOCKING WITH STAINLESS STEEL W/ODA STAGGERED AT 3'-0\"/>



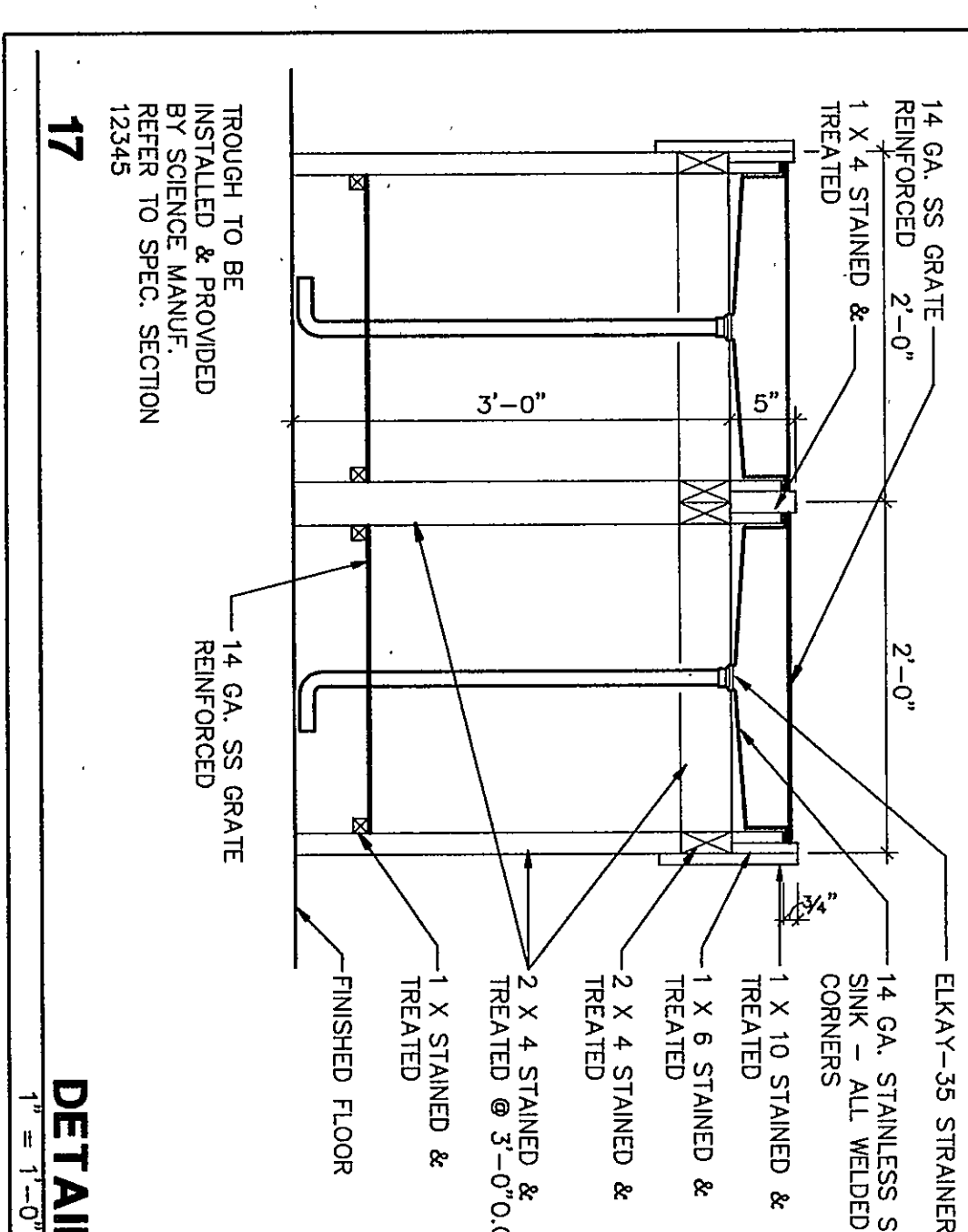
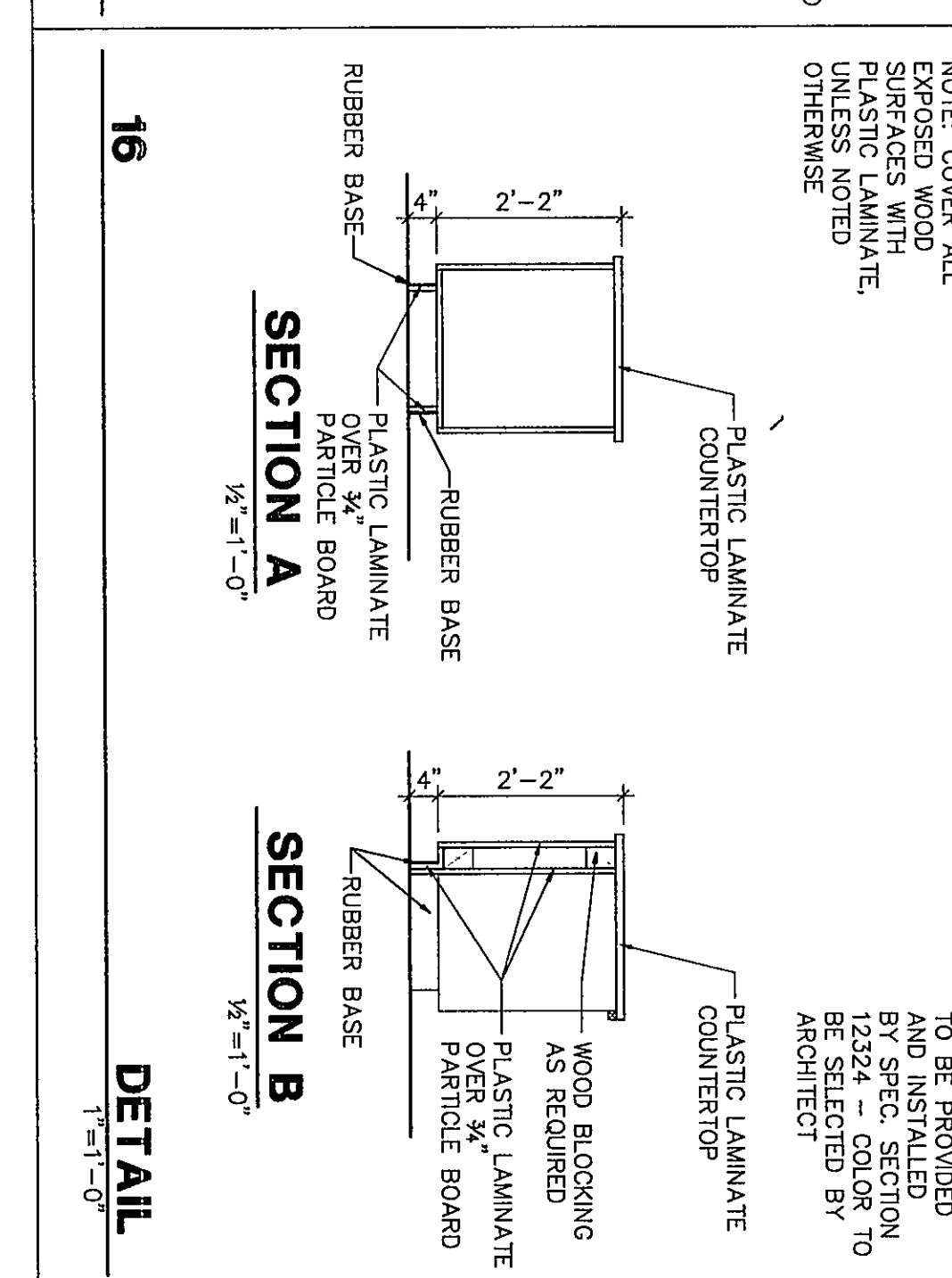
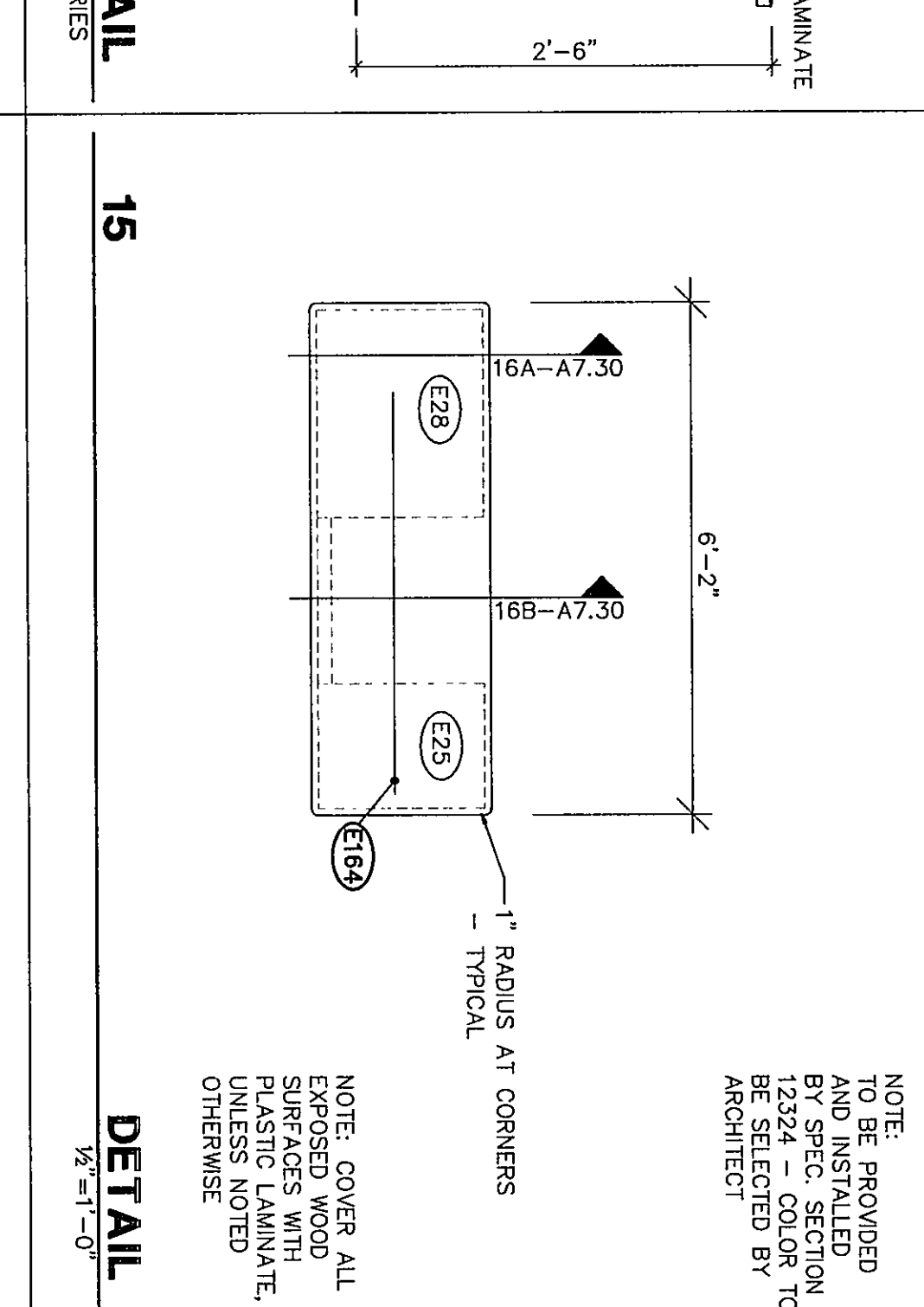
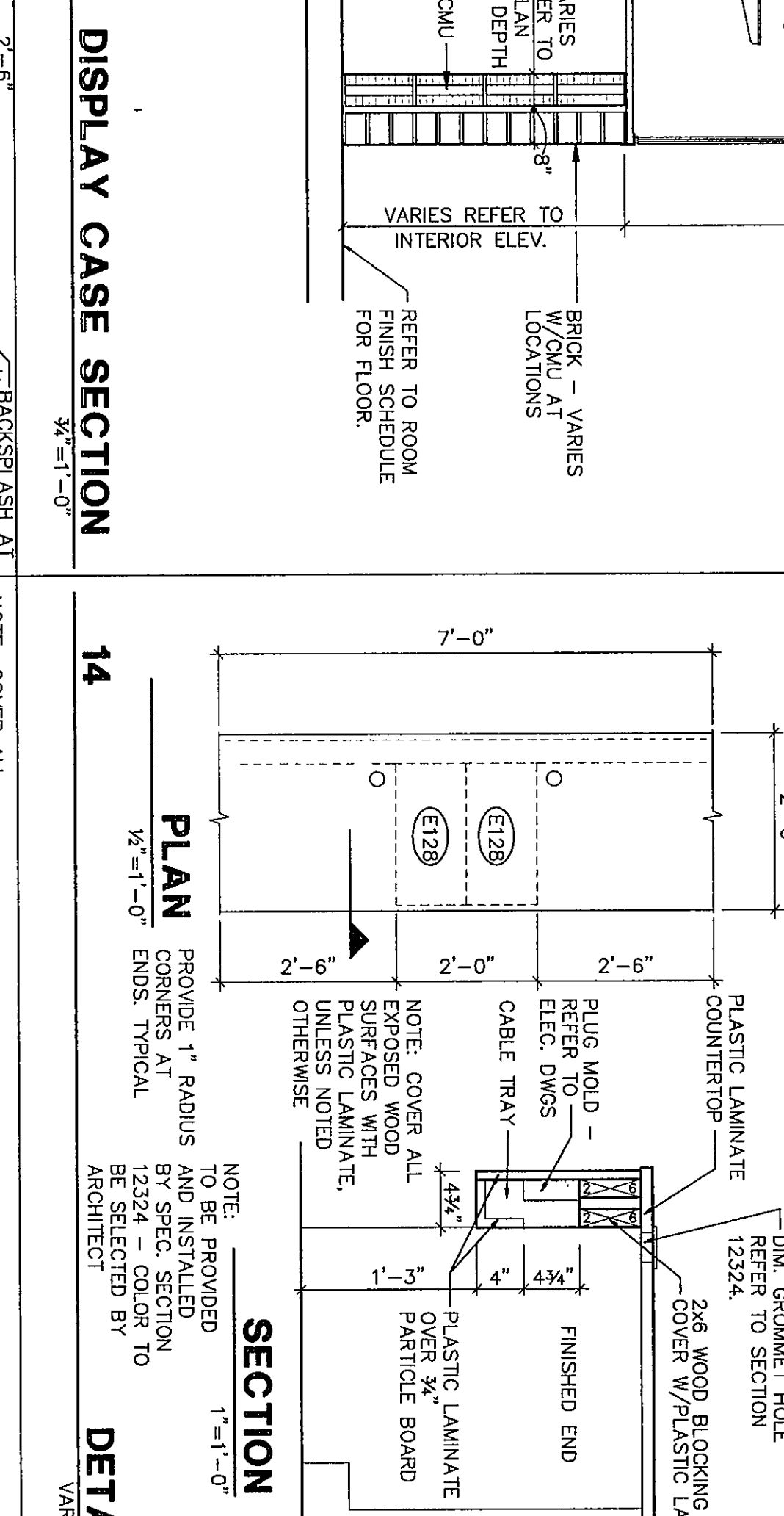
CONTINUOUS 2X HARDWOOD LAMINATED PLANKS GLUED TOGETHER USING TYPE 1 EPOXY ADHESIVE. PLANKS TO BE BASED PLANS TO BE FASTENED TO BE BLOCKING WITH STAINLESS STEEL W/ODA STAGGERED AT 3'-0\"/>



CONTINUOUS 2X HARDWOOD LAMINATED PLANKS GLUED TOGETHER USING TYPE 1 EPOXY ADHESIVE. PLANKS TO BE BASED PLANS TO BE FASTENED TO BE BLOCKING WITH STAINLESS STEEL W/ODA STAGGERED AT 3'-0\"/>



CONTINUOUS 2X HARDWOOD LAMINATED PLANKS GLUED TOGETHER USING TYPE 1 EPOXY ADHESIVE. PLANKS TO BE BASED PLANS TO BE FASTENED TO BE BLOCKING WITH STAINLESS STEEL W/ODA STAGGERED AT 3'-0\"/>



CONTINUOUS 2X HARDWOOD LAMINATED PLANKS GLUED TOGETHER USING TYPE 1 EPOXY ADHESIVE. PLANKS TO BE BASED PLANS TO BE FASTENED TO BE BLOCKING WITH STAINLESS STEEL W/ODA STAGGERED AT 3'-0\"/>

