

ROOM NO.	ROOM NAME	AREA S.F.	CEILING HEIGHT
N101	VESTIBULE	397	10'-0"
N102	CORRIDOR	3554	10'-0"
N103	CONCESSION STAND	337	9'-4"
N104	DINING ROOM	104	9'-4"
N105	DRINK ROOM	130	9'-4"
N106	SHOWER	130	9'-4"
N107	STORAGE	749	9'-4"
N108	ELEVATOR	71	9'-4"
N109	COACH LOCKER	52	9'-4"
N110	STAIR	74	9'-4"
N111	STAIR	222	9'-4"
N112	STAIR	104	9'-4"
N113	TOILET	49	9'-4"
N114	TOILET	397	9'-4"
N115	PE STORAGE	425	9'-4"
N116	PE STORAGE	15252	9'-4"
N117	PE STORAGE		
N118	PE STORAGE		
N119	PE STORAGE		
N120	PE STORAGE		

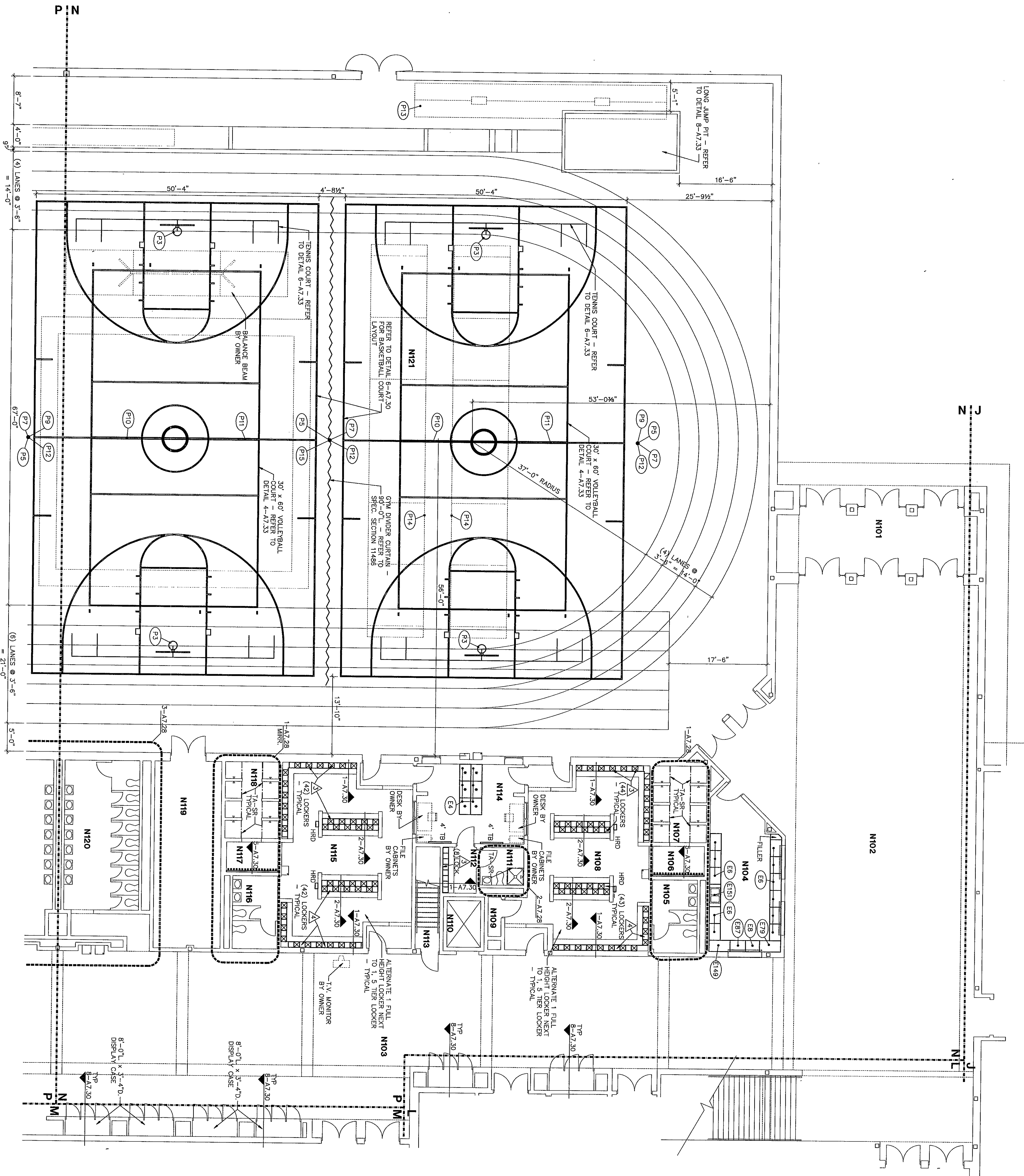
#### EQUIPMENT PLAN GENERAL NOTES

- INDICATES SCHEDULED RESIDENTIAL AND SPECIALTY CASEWORK. REFER TO SPECIFICATION SECTION 11450 FOR SCHEDULE.
- INDICATES SCHEDULED DARKROOM CASEWORK. REFER TO SPECIFICATION SECTION 11470 FOR SCHEDULE.
- INDICATES SCHEDULED PHYSICAL EDUCATION CASEWORK. REFER TO SPECIFICATION SECTION 11480 FOR SCHEDULE.
- INDICATES SCHEDULED MEDIA CENTER CASEWORK. REFER TO SPECIFICATION SECTION 12315 FOR SCHEDULE.
- INDICATES SCHEDULED EDUCATIONAL CASEWORK. REFER TO SPECIFICATION SECTION 12324 FOR SCHEDULE.
- INDICATES SCHEDULED SERVICE CASEWORK. REFER TO SPECIFICATION SECTION 12345 FOR SCHEDULE.
- INDICATES SCHEDULED MUSIC CASEWORK. REFER TO SPECIFICATION SECTION 12324 FOR SCHEDULE.
- COUNTERTOPS SHALL BE PROVIDED WITH A 4" HIGH BACKSPASH AND BROS/CLASH EXCEPT WHEN DETAILED OTHERWISE.
- PROVIDE FILTERS AS REQUIRED BETWEEN CASEWORK UNITS AND OTHER WALL UNITS AND WALL.
- PROVIDE CONTINUOUS COUNTERTOPS.
- ALL EXPOSED ENDS AND BACKS SHALL BE FINISHED.
- THE CABINET INSTALLER SHALL CALL OUT BETWEEN COUNTERTOPS AND BACKSPLASHES, ENDSPLASHES AND WALLS.
- THE CABINET INSTALLER SHALL CUT CASEWORK UNITS AS REQUIRED FOR PLUMBING/ELECTRICAL LINES AND CABINET-INSTALLED EQUIPMENT.
- ALL WALL-MOUNTED CASEWORK SHALL BE MOUNTED WITH THE TOP @ 7'-0" A.F.F. UNLESS NOTED OTHERWISE.
- SEE SHEET A7.28 FOR MOUNTING HEIGHTS.
- ALL CASEWORK DOORS AND DRAWERS SHALL BE LOCKABLE - RETED PER ROOM UNLESS NOTED OTHERWISE.
- CABINETS INDICATED TO RECEIVE SINKS SHALL BE CONSTRUCTED COORDINATE WITH DIVISION 15 FOR SINK SIZES.
- PROVIDE A FINISHED TOP ON ALL CABINETS THAT DO NOT HAVE A BULKHEAD ABOVE THEM.
- PROVIDE ABOVE ALL WALL CABINETS BELOW BULKHEADS CLOSURE PER. REFER TO DETAIL 3-A7.29.
- REFER TO DETAIL 4-A7.28 FOR WALL CABINET CONSTRUCTION.
- VERIFY LOCATION OF T.V. MONITOR IN CLASSROOMS IF ALTERNATIVE FOR THE SLOPED PROJECTION SCREEN IS NOT ACCEPTED.

#### LOCKER LEGEND

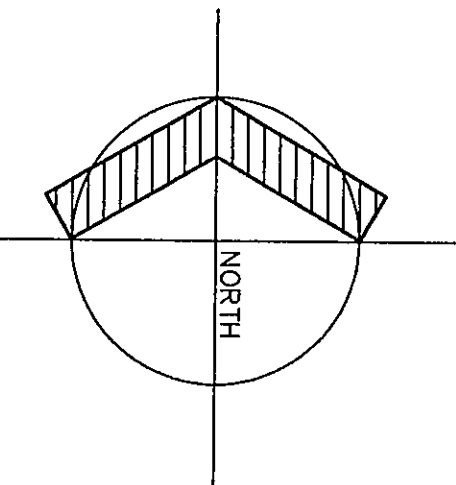
- 12" X 12" X 60" STANDARD LOCKERS  
REFER TO DETAIL 3-A7.29 & SPEC.  
SECT. 10500.
- 12" X 12" X 72" STANDARD LOCKERS  
WITH SLOPED TOPS - REFER TO DETAIL 3-A7.30 & SPEC. SECT. 10500.
- 12" X 12" X 60" ATHLETIC LOCKERS  
WITH SLOPED TOPS - REFER TO DETAILS 1-A7.30 & 2-A7.30 AND SPEC. SECTION 10505.
- 12" X 12" X 12" 5 TIER HIGH ATHLETIC LOCKERS WITH SLOPED TOPS - REFER TO DETAILS 1-A7.30 AND 2-A7.30 AND SPEC. SECTION 10505.
- 24" X 18" X 72" ATHLETIC LOCKERS WITH SLOPED TOPS - REFER TO DETAIL 1-A7.30 & SPEC. SECT. 10505.
- 24" X 21" X 72" ATHLETIC LOCKERS WITH SLOPED TOPS - REFER TO DETAIL 3-A7.30 & SPEC. SECT. 10505.

PROVIDE LOCKERS FOR THE PHYSICALLY CHALLENGED PER SPEC. SECTION 10500.



#### EQUIPMENT PLAN UNIT N1

1/8" = 1'-0"

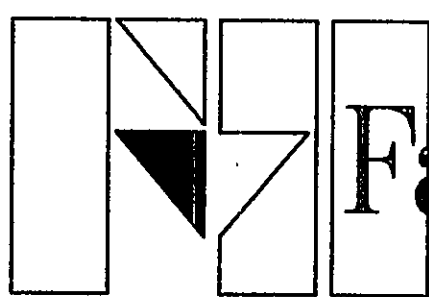


#### EQUIPMENT PLAN UNIT N1

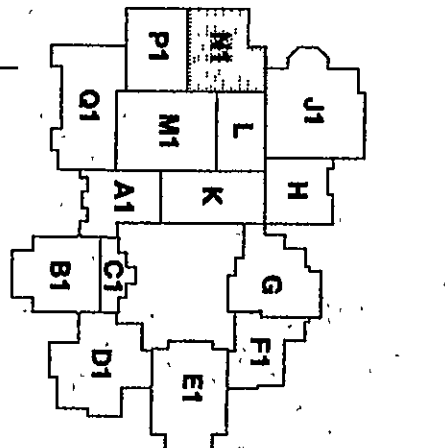
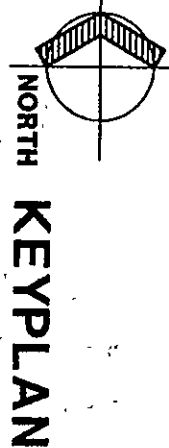
DRAWN BY: LEC/SB COMM. NO.: 95067.00  
CHECKED BY: JHJ DATE: APRIL 21, 1997

A7.20

REVISIONS NO. DATE



**Fanning/Howey Associates, Inc.**  
Architects Engineers Consultants



THE NEW  
**CHESTERTON HIGH SCHOOL**  
FOR THE  
DUNELAND SCHOOL CORPORATION  
CHESTERTON, INDIANA

COPYRIGHT 1997 BY FANNING/HOWEY ASSOCIATES, INC.

