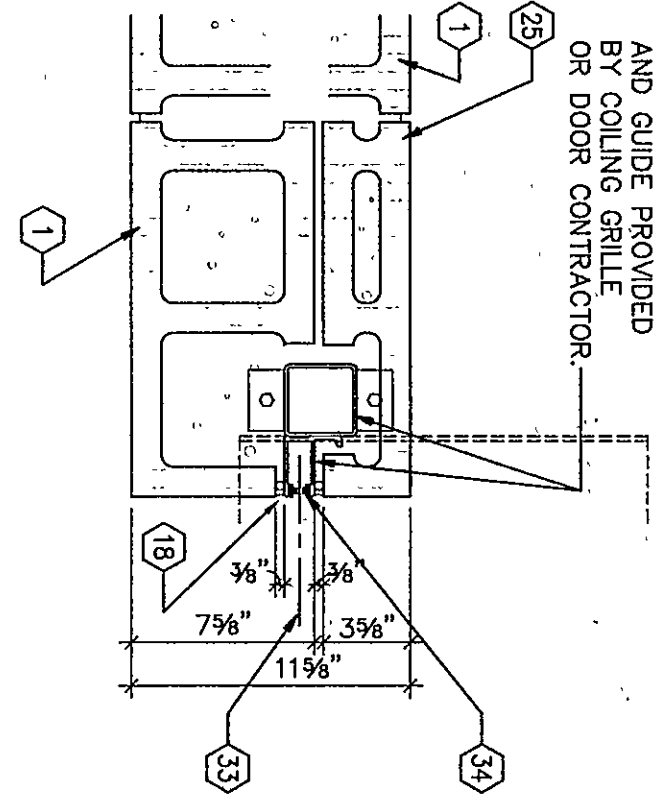
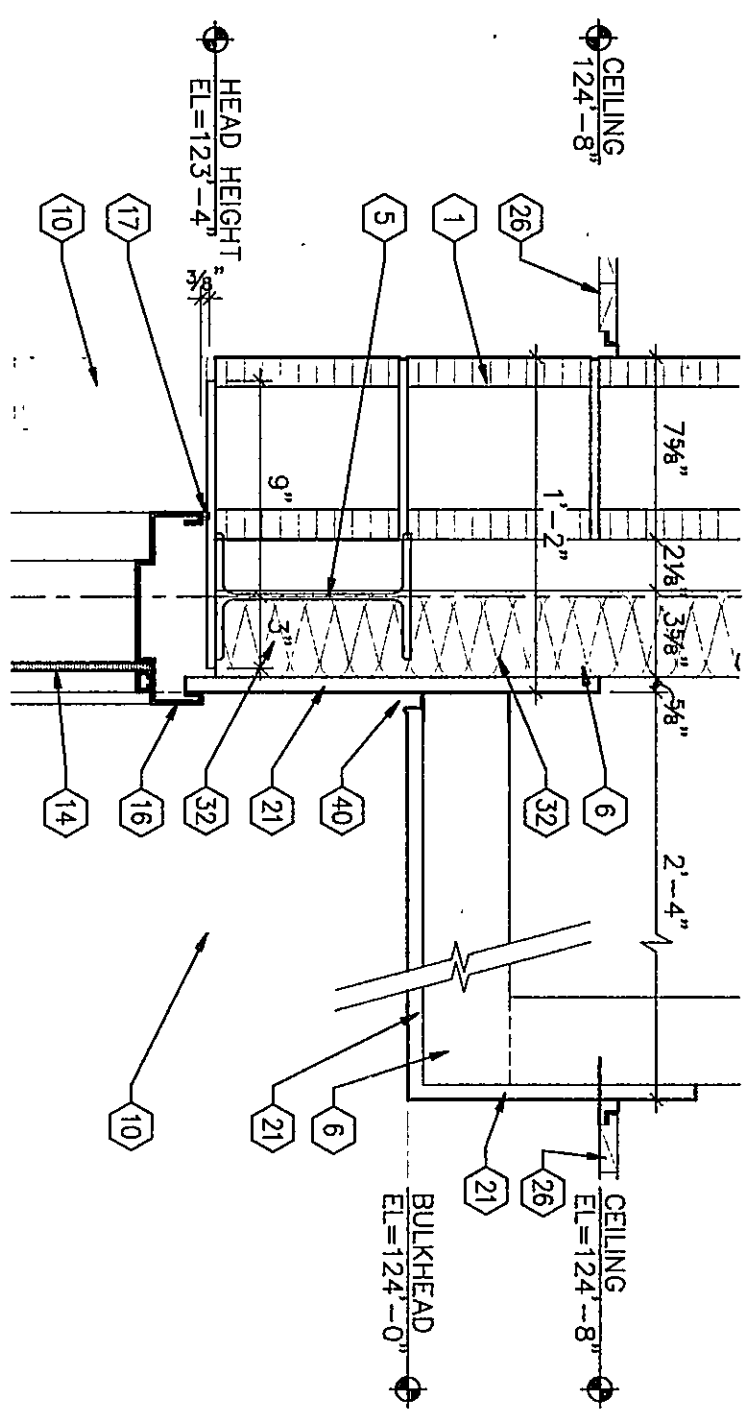


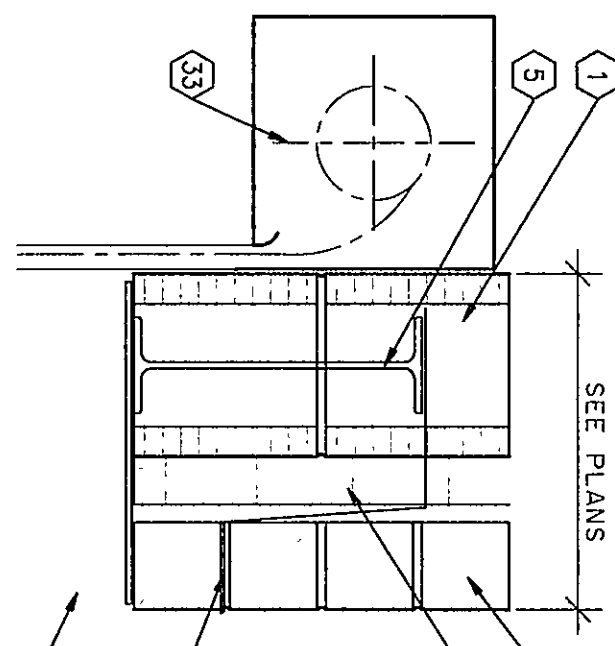
32. © D215A  
CU. © D215B



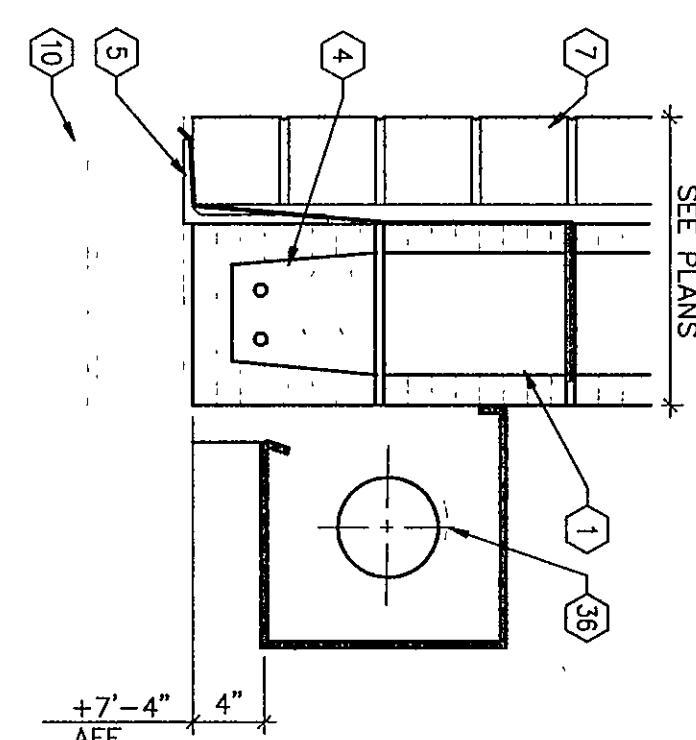
1  
JAMB  
1/2" = 1'-0"



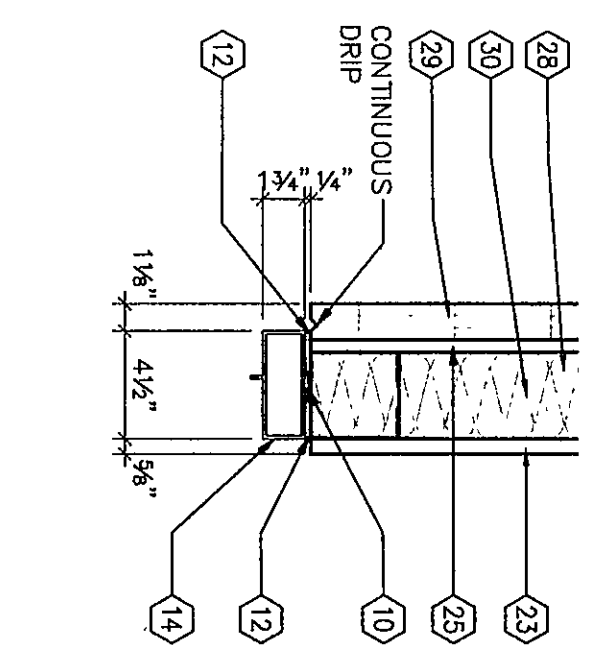
4  
HEAD  
1/4" = 1'-0"



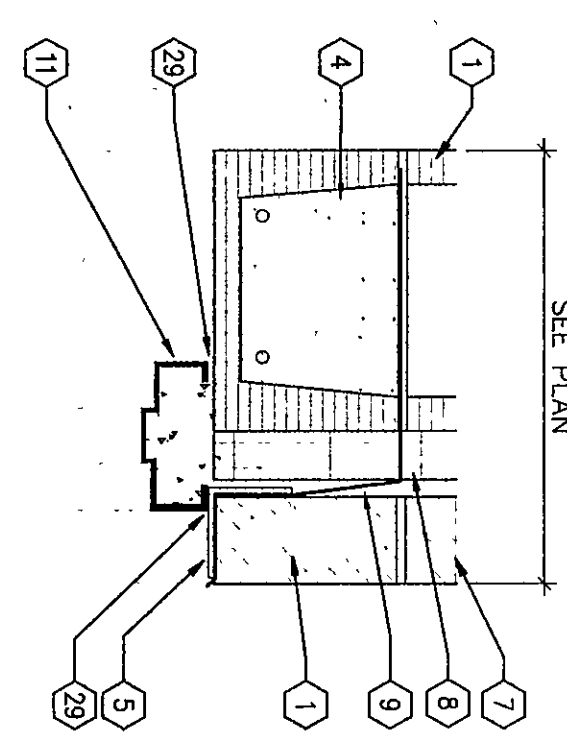
7  
HEAD  
1/2" = 1'-0"



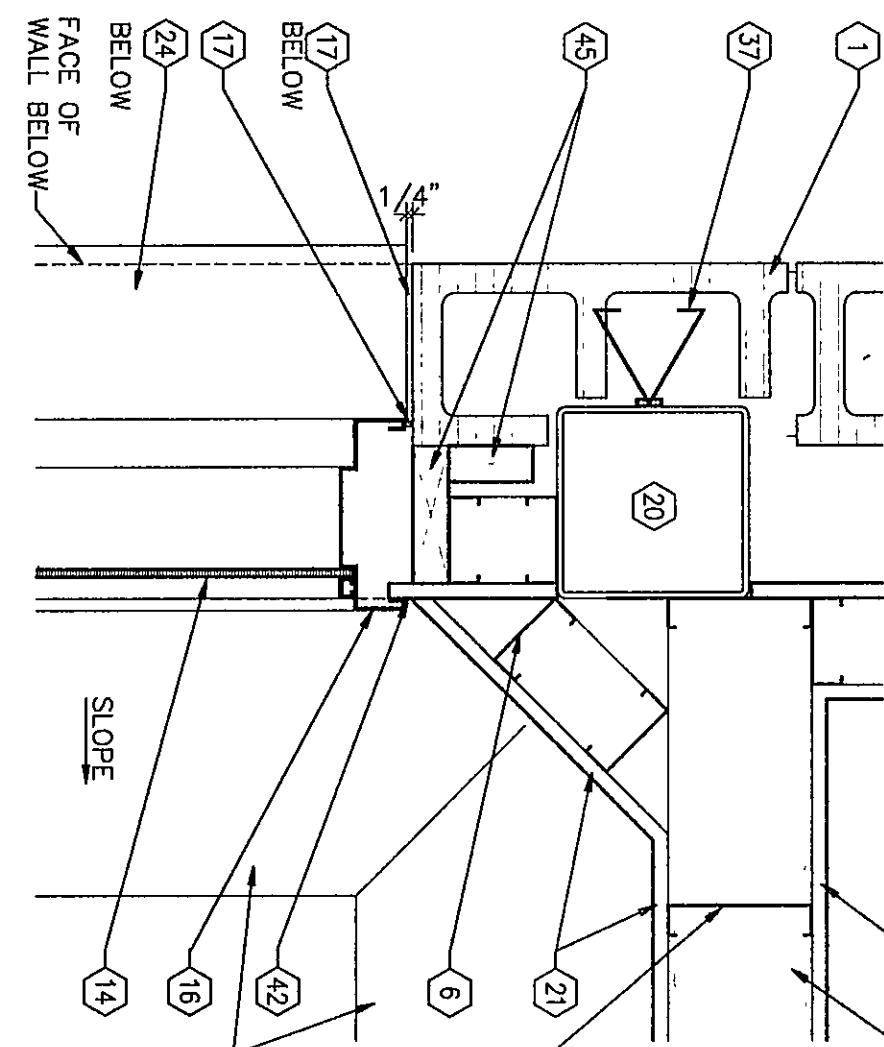
10  
HEAD  
1/2" = 1'-0"



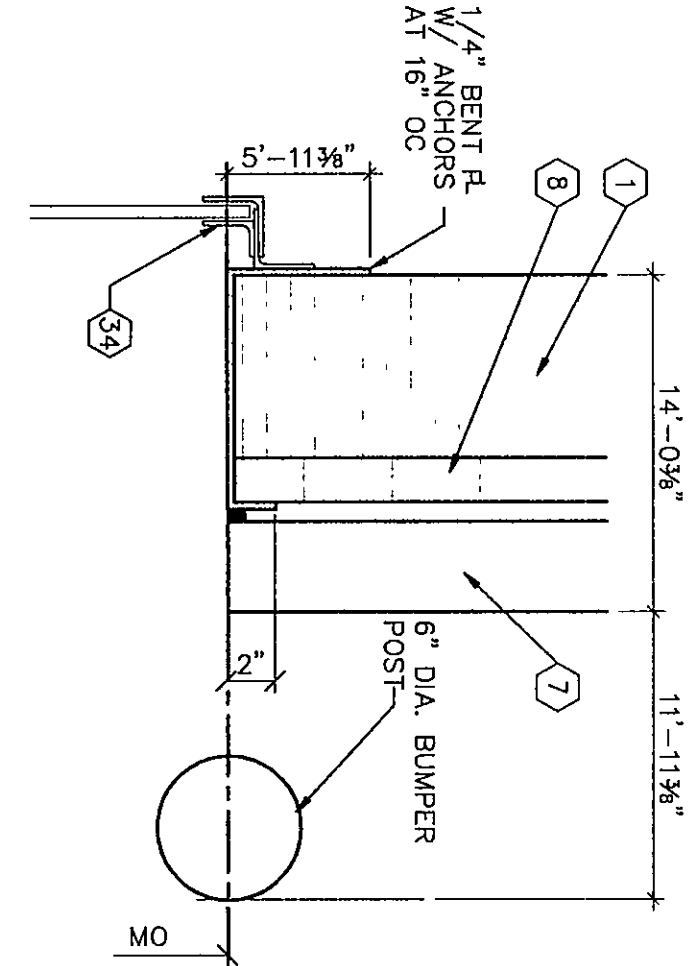
18  
HEAD  
1/2" = 1'-0"  
REFER TO SHEET A6.3 1/2" = 1'-0"  
FOR TYPICAL NOTES.



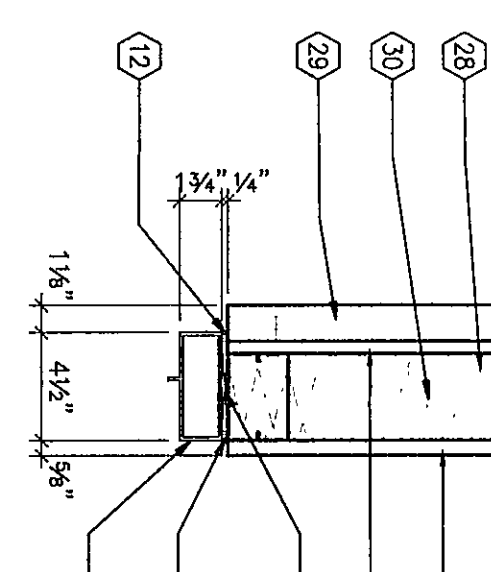
2  
HEAD  
1/2" = 1'-0"



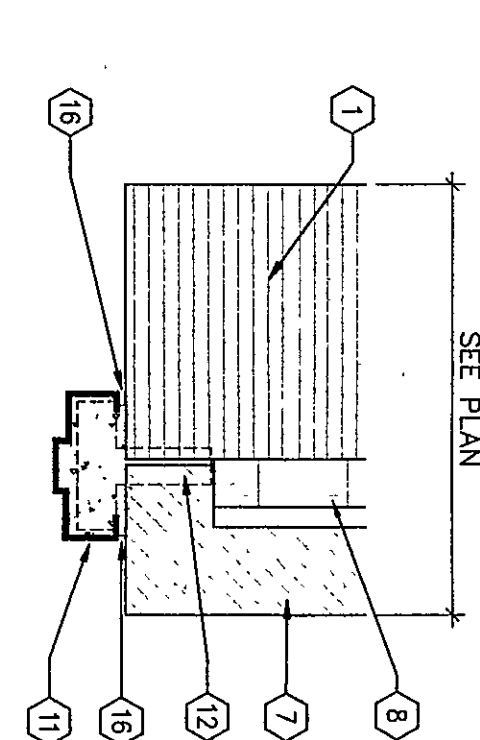
5  
JAMB  
1/2" = 1'-0"



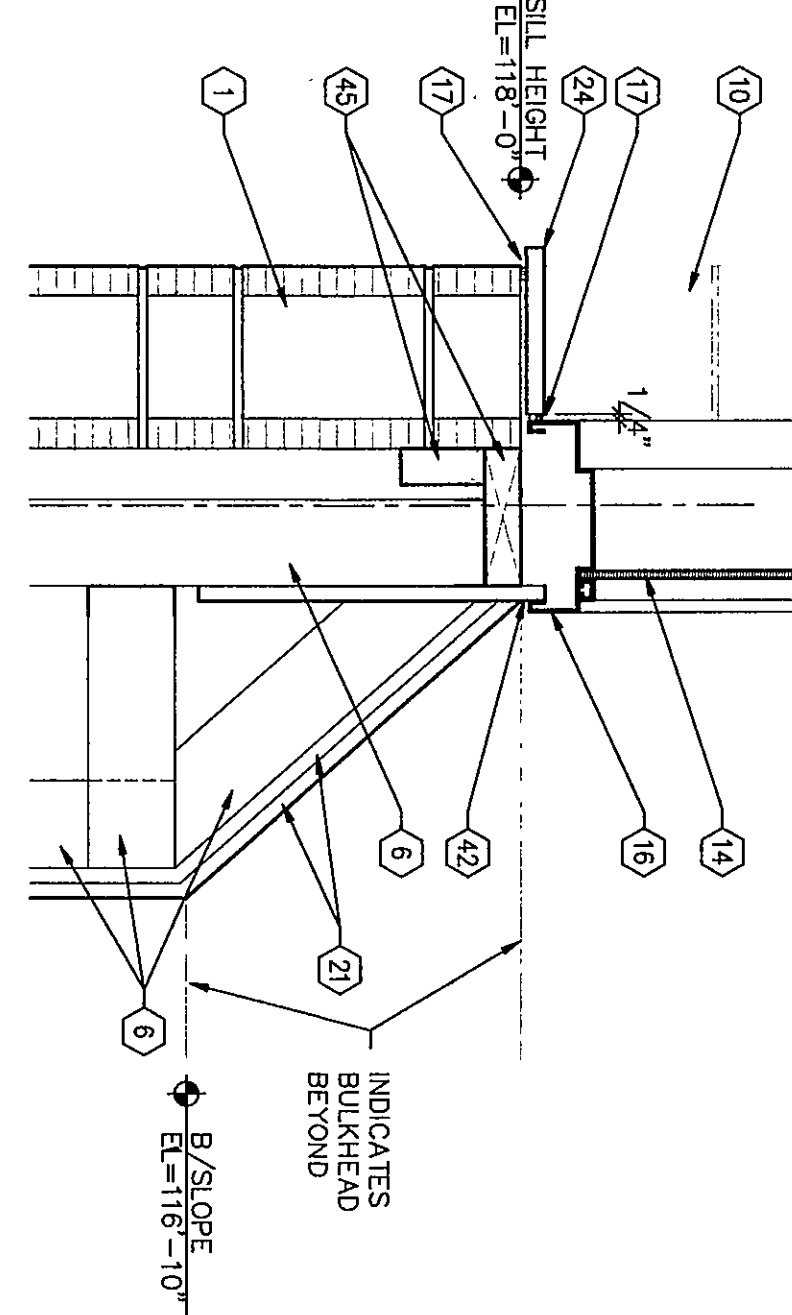
8  
JAMB  
1/2" = 1'-0"



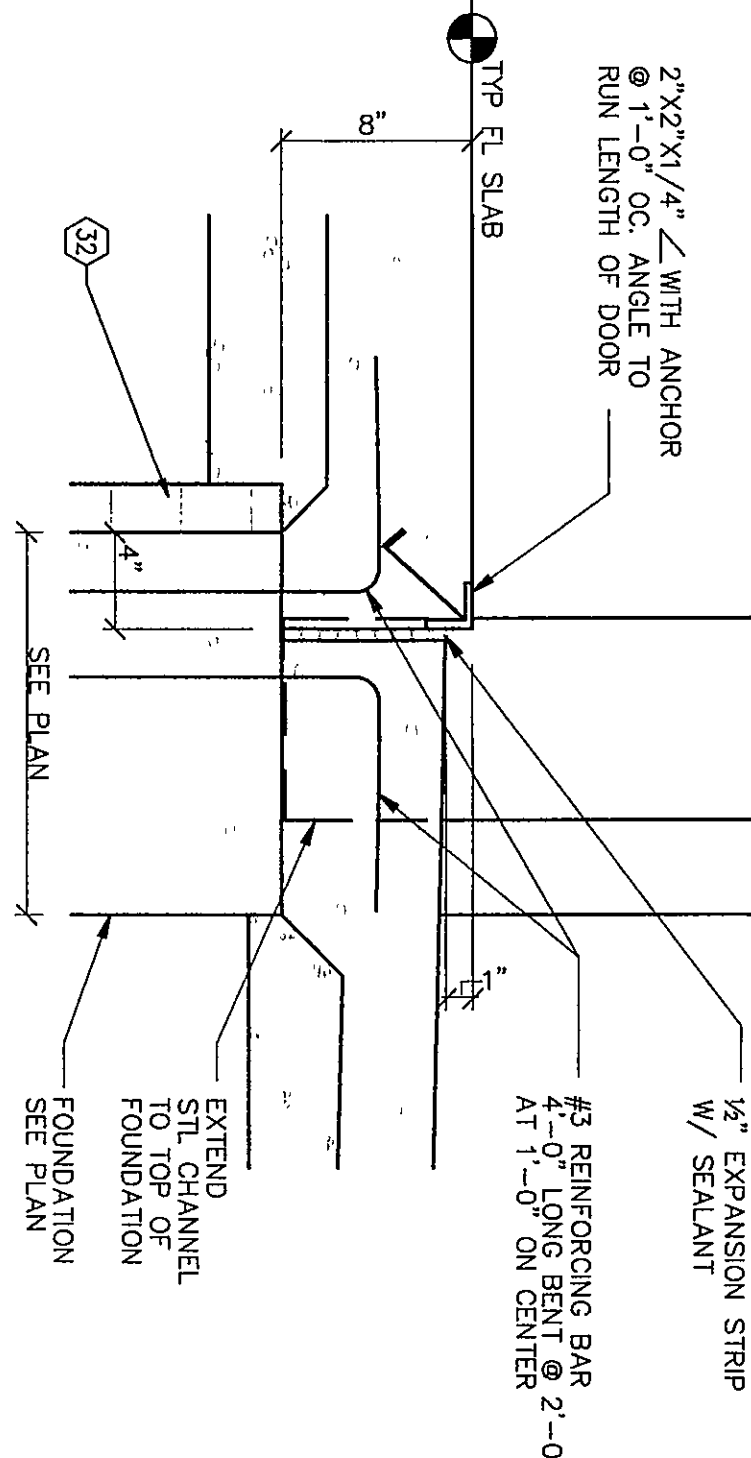
19  
JAMB  
1/2" = 1'-0"  
REFER TO SHEET A6.3 1/2" = 1'-0"  
FOR TYPICAL NOTES.



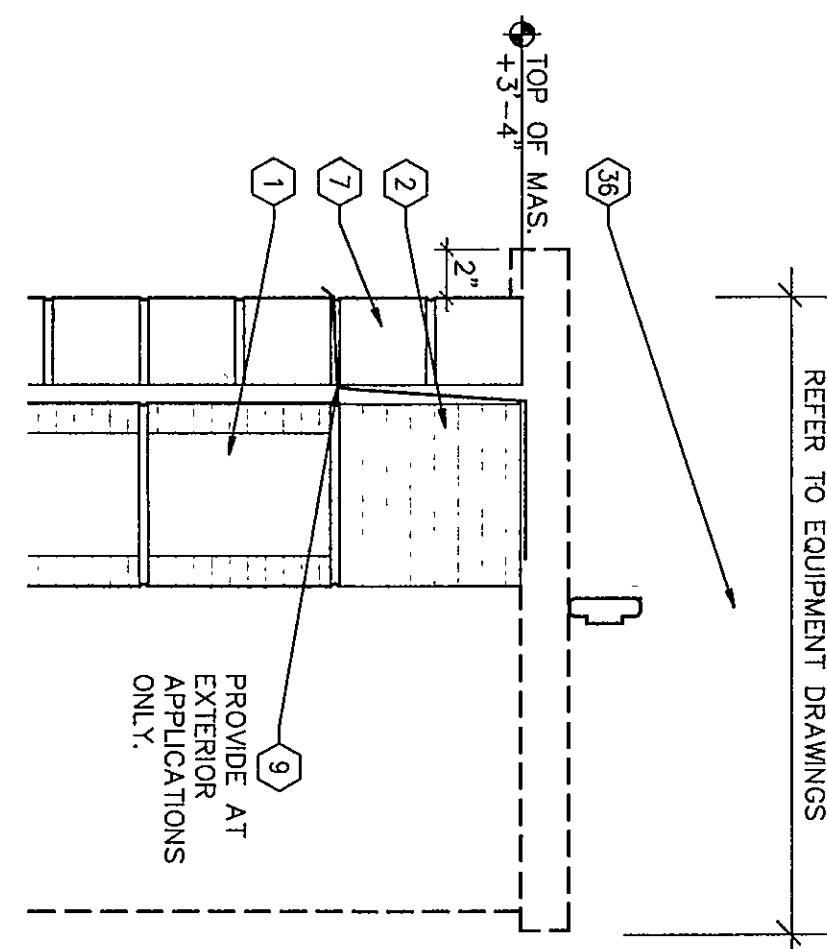
3  
JAMB  
1/2" = 1'-0"



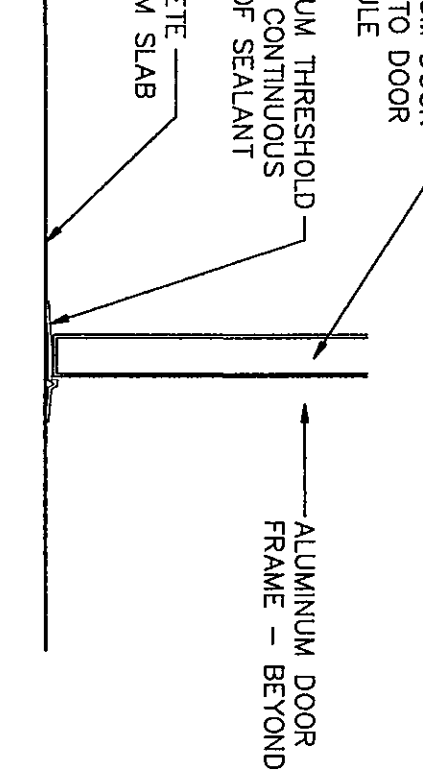
6  
SILL  
1/2" = 1'-0"



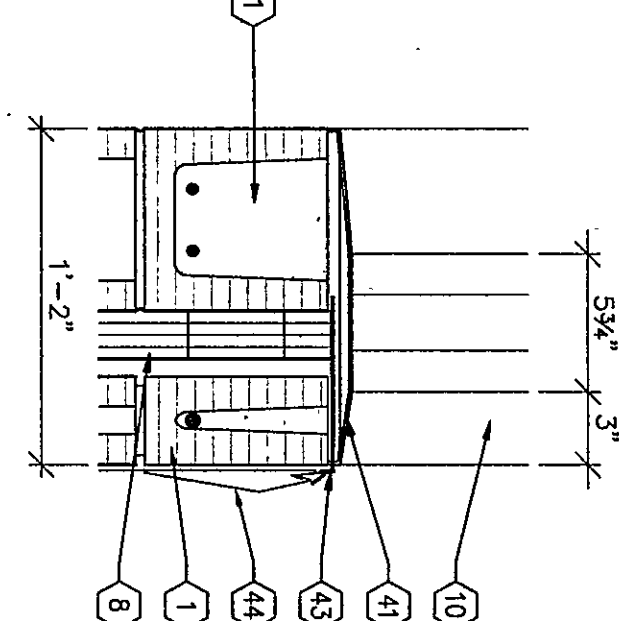
9  
SILL  
1/2" = 1'-0"



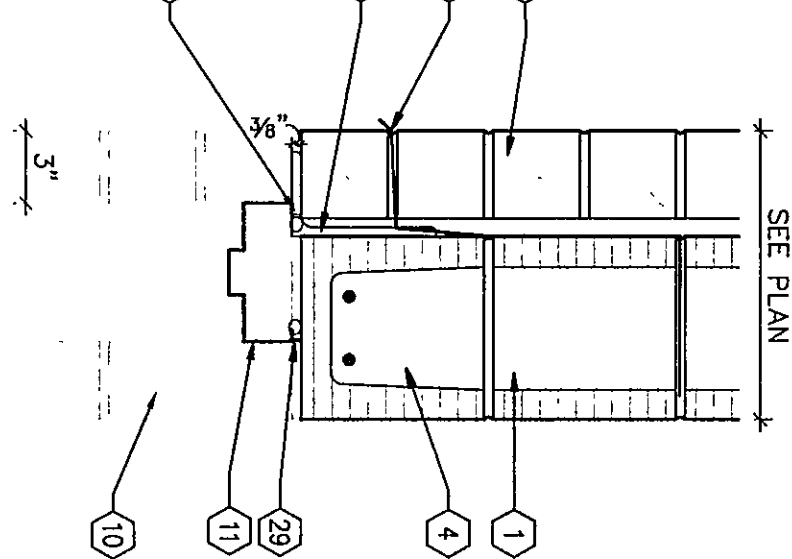
12  
SILL  
1/2" = 1'-0"



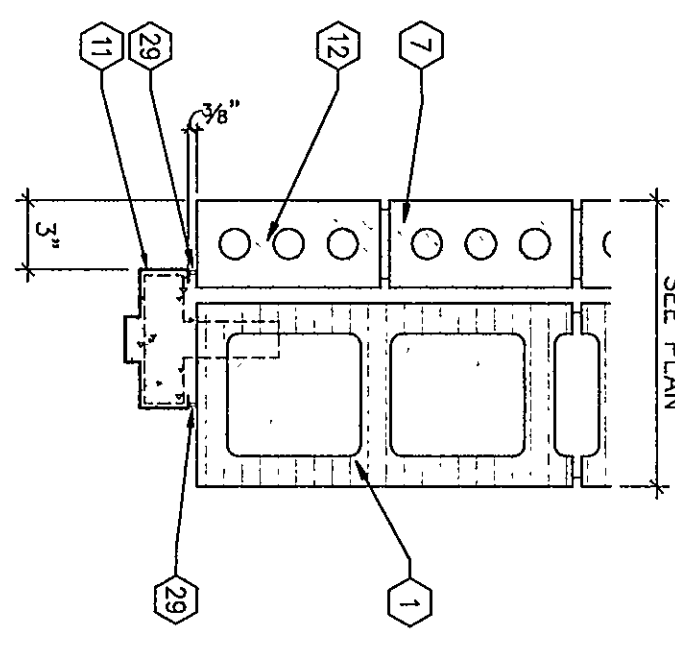
20  
SILL  
1/2" = 1'-0"



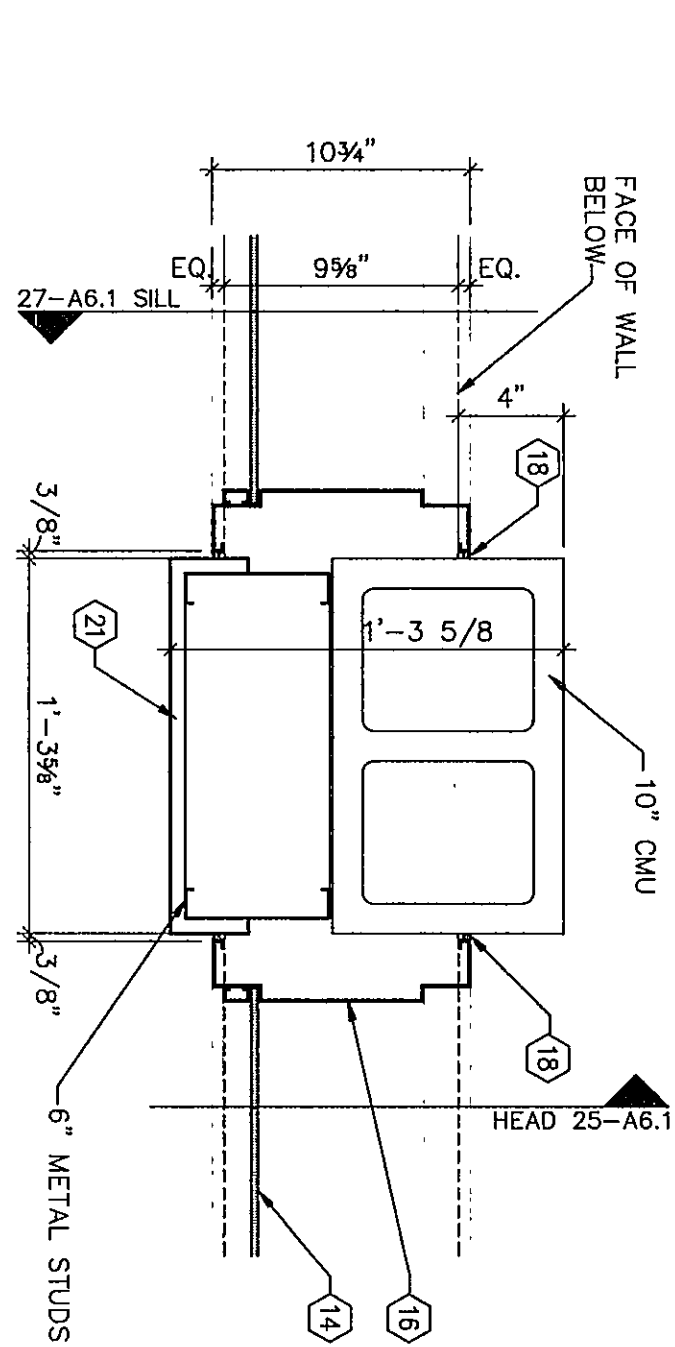
13  
SILL  
1/2" = 1'-0"



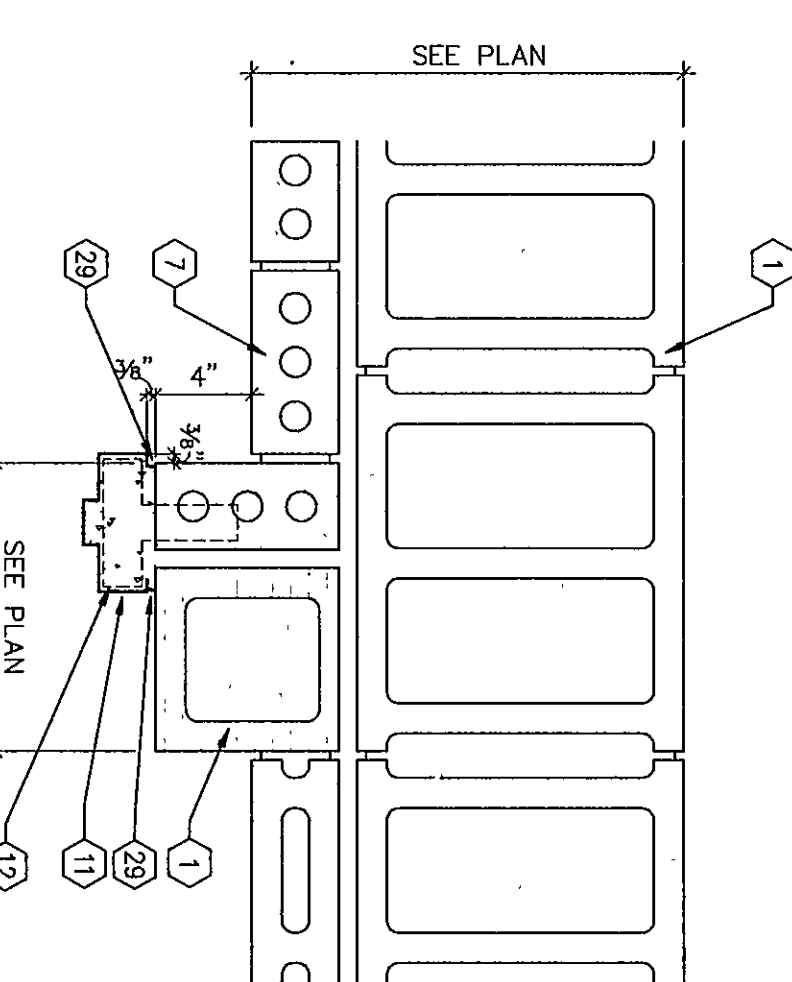
14  
HEAD  
1/2" = 1'-0"



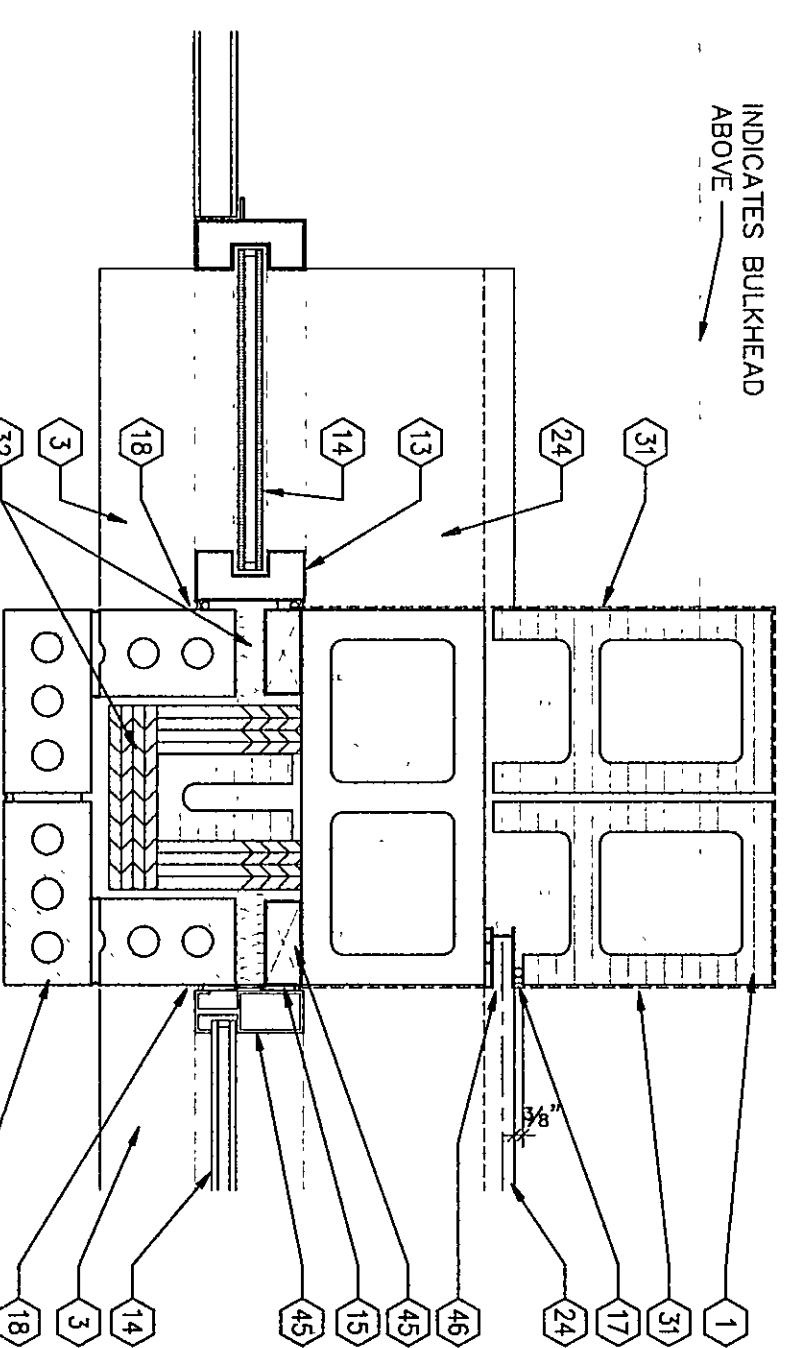
15  
JAMB  
1/2" = 1'-0"



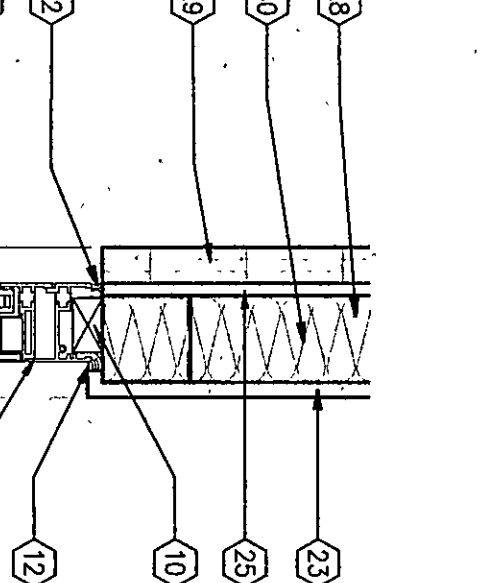
16  
JAMB  
1/2" = 1'-0"



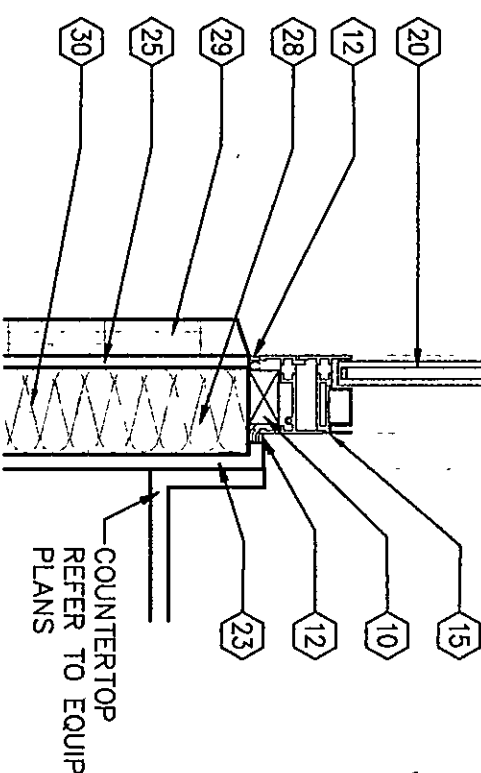
17  
JAMB  
1/2" = 1'-0"



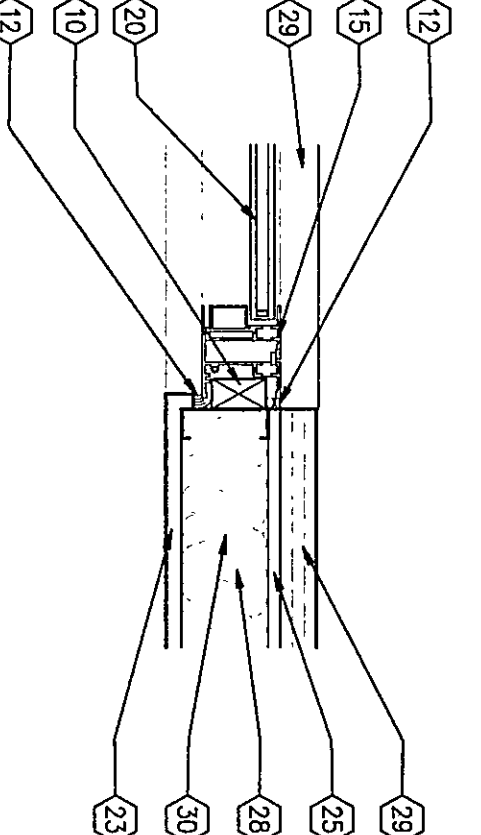
21  
JAMB  
1/2" = 1'-0"



22 HEAD DETAIL  
1/2" = 1'-0"  
REFER TO SHEET A6.3  
FOR TYPICAL NOTES.



23 SILL DETAIL  
1/2" = 1'-0"  
REFER TO SHEET A6.3  
FOR TYPICAL NOTES.

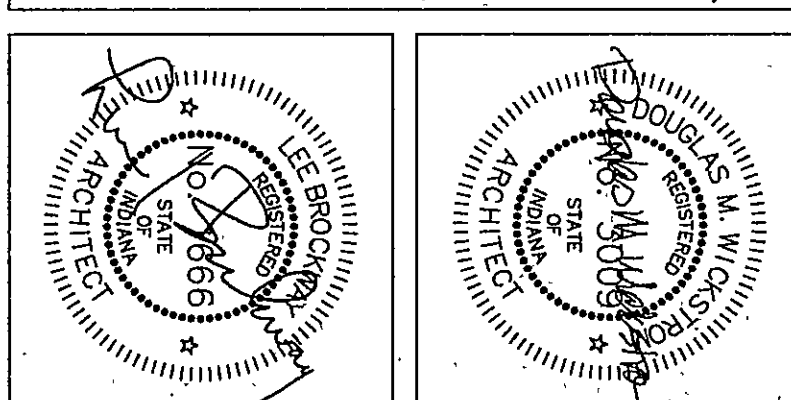


24 JAMB DETAIL  
1/2" = 1'-0"  
REFER TO SHEET A6.3  
FOR TYPICAL NOTES.

# KEYNOTES - DOOR DETAILS

1. CMU - REFER TO SECTION 04200.
2. SOLID CMU - REFER TO SECTION 04200.
3. CAST STONE - REFER TO SECTION 04200.
4. CMU LINTEL. REFER TO SECTION 04200.
5. STEEL LINTEL. REFER TO SECTION 04200.
6. 3/4" METAL STUDS AT 16" OC.
7. FACE BRICK - REFER TO SECTION 04200.
8. 2" RIGID CAVITY INSULATION.
9. THRU-WALL FLASHING WITH WEIR HOLES.
10. WALL BEYOND.
11. HOLLOW METAL FRAME. GROUT FRAME FULL.
12. ALUMINUM FRAME. REFER TO SECTION 08121.
13. GLAZING BY SECTION 08200.
14. WOOD SHIM AND SEALANT WITH BACKER ROD BOTH SIDES.
15. REFER TO SECTION 08100.
16. SEALANT WITH BACKER ROD.
17. SEALANT WITH BACKER ROD BOTH SIDES.
18. TREATED WOOD BLOCKING.
19. STEEL COLUMN. REFER TO SECTION 04200.
20. 5/8" TYPE "X" GYPSUM WALLBOARD.
21. METAL STUD FRAMING.
22. DIMENSIONAL STONE - REFER TO SECTION 04200.
23. 7/8" MARBLE STOOL.
24. 4" CMU.
25. ACT CEILING - REFER TO SECTION 09510.
26. STAINLESS STEEL DOOR FRAME. REFER TO SECTION 08331.
27. MAKE GROUT OUT TO A DEPTH OF 3/4" AND FILL WITH SEALANT.
28. STAINLESS STEEL DOOR GUIDES. REFER TO SECTION 08331.
29. INDICATES SKIN COAT - REFER TO PLANS AND ROOM FINISH SCHEDULE FOR SPECIFIC LOCATIONS.
30. INSULATION - REFER TO SECTION 07210.
31. COLLING OVERHEAD DOOR - REFER TO SECTION 08332.
32. COLLING OVERHEAD TRACK - REFER TO SECTION 08332.
33. STRUCTURAL COLUMN. REFER TO THE STRUCTURAL DRAWINGS.
34. MASSPORT TEST. 4" x 4" x 4" C. WELDED TO COLUMN.
35. REFER TO SECTION 04200.
36. 1" x 4" OAK CHAIR RAIL. REFER TO DETAIL 4.48.1.
37. REVEAL DRYWALL TRIM - REFER TO DETAIL 4.48.1.
38. THRESHOLD - REFER TO THE DOOR AND FRAME SCHEDULE.
39. SET OUTSIDE EDGE IN BED OF SEALANT.
40. SEALANT.
41. PRE-FINISHED ALUMINUM FLASHING - REFER TO SECTION 08550.
42. REGLET AND COUNTERFLASHING - REFER TO SECTION 07550.
43. ALUMINUM WINDOW - REFER TO SECTION 08550.
44. WOODEN DOOR FRAME. REFER TO SECTION 08550.
45. FINISHED WALL SURFACE - REFER TO SECTION 12500.
46. 5/8" SHEATHING - REFER TO SECTION 04100.
- 47.

COPYRIGHT 1997 BY FANNING/HOWEY ASSOCIATES, INC.



THE NEW  
**CHESTERTON HIGH SCHOOL**  
FOR THE  
DUNELAND SCHOOL CORPORATION  
CHESTERTON, INDIANA

**Fanning/Howey Associates, Inc.**  
Architects Engineers Consultants

## DOOR DETAILS

DRAWN BY: TCB COMM. NO.: 95067.00  
CHECKED BY: JHJ DATE: APRIL 21, 1997

REVISIONS NO. DATE

**A6.4**

CHESTERTON HIGH SCHOOL  
95067.00

07-A-10A