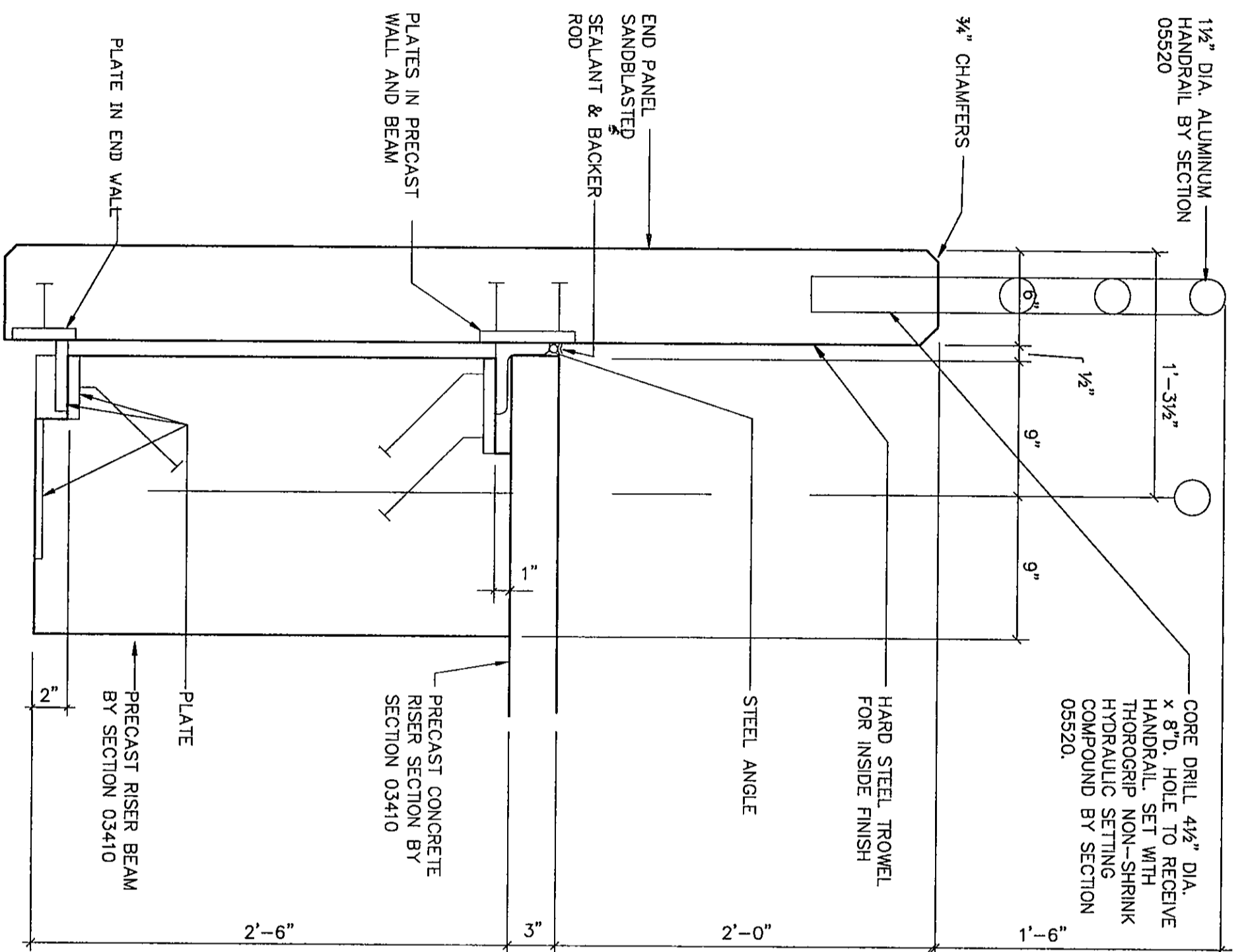
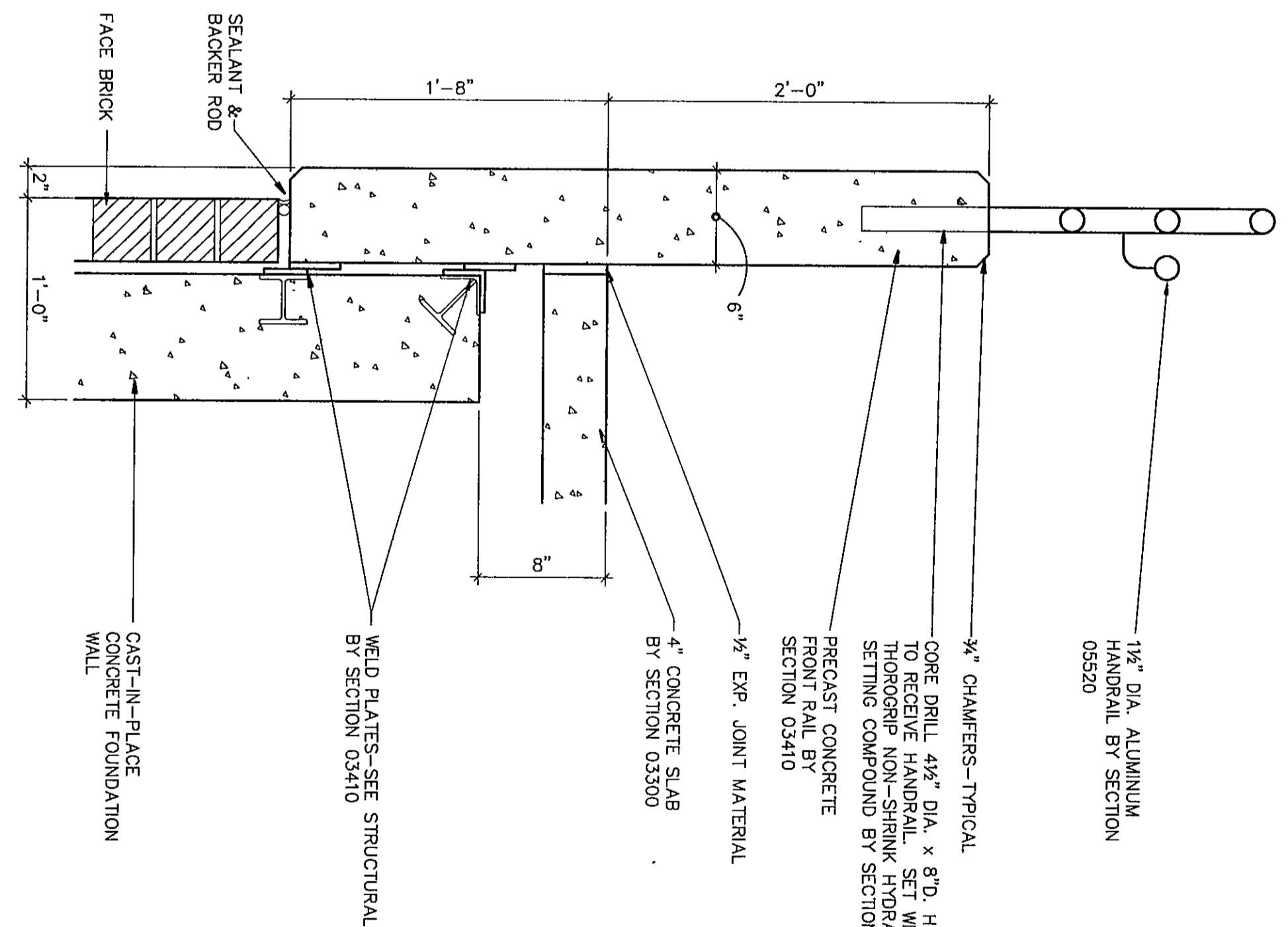


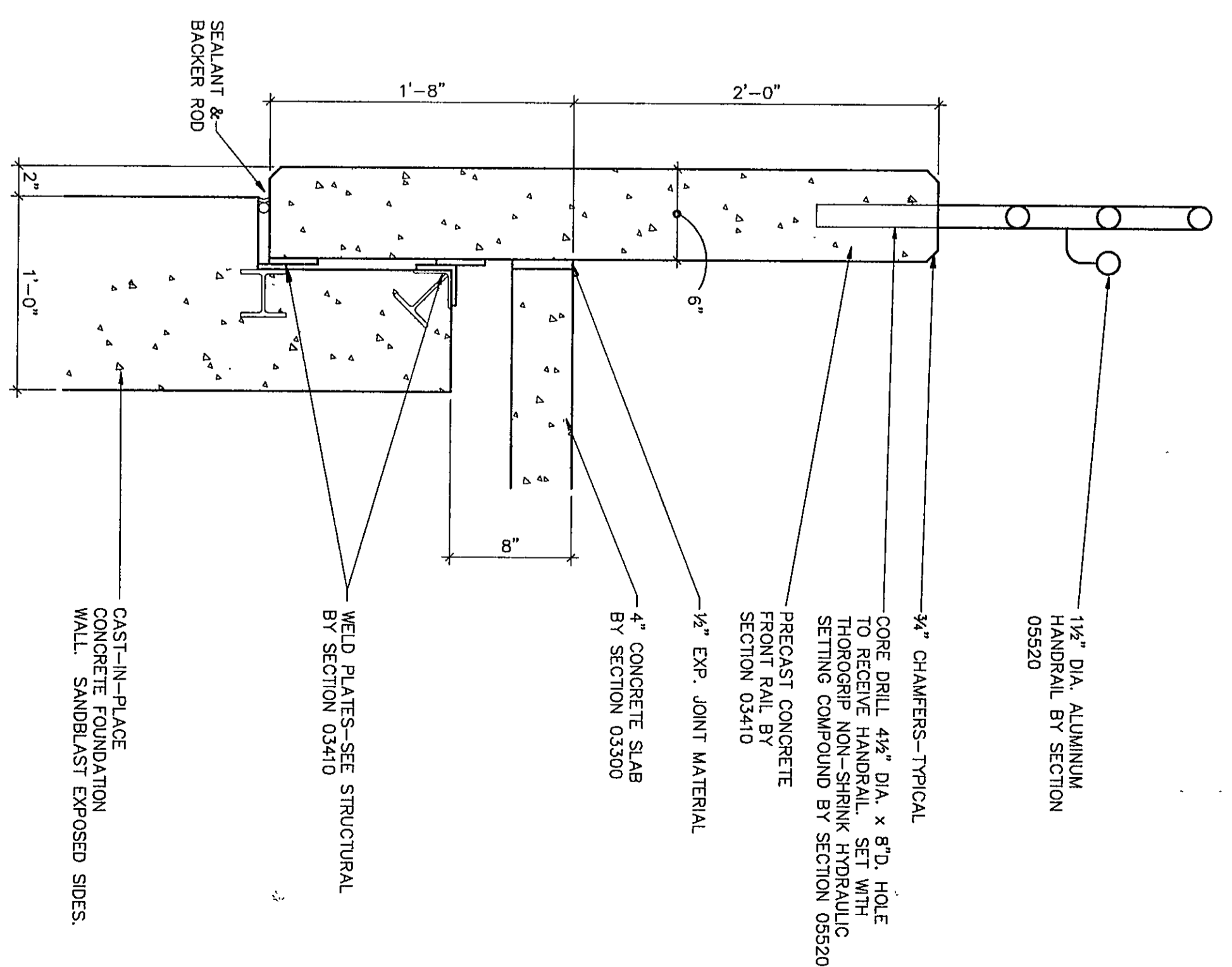
SECTION 1
1 1/2" = 1'-0"



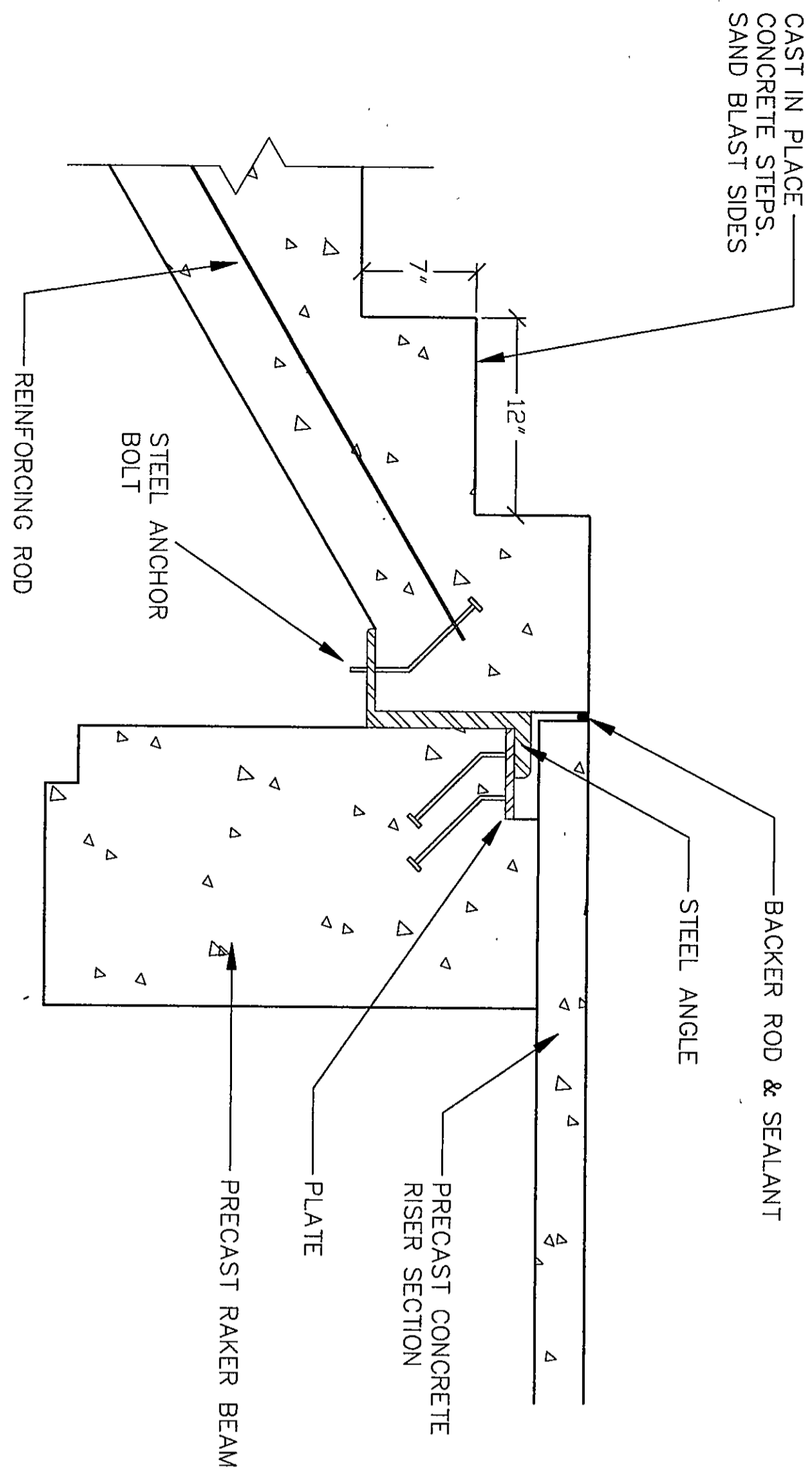
SECTION 2
1 1/2" = 1'-0"



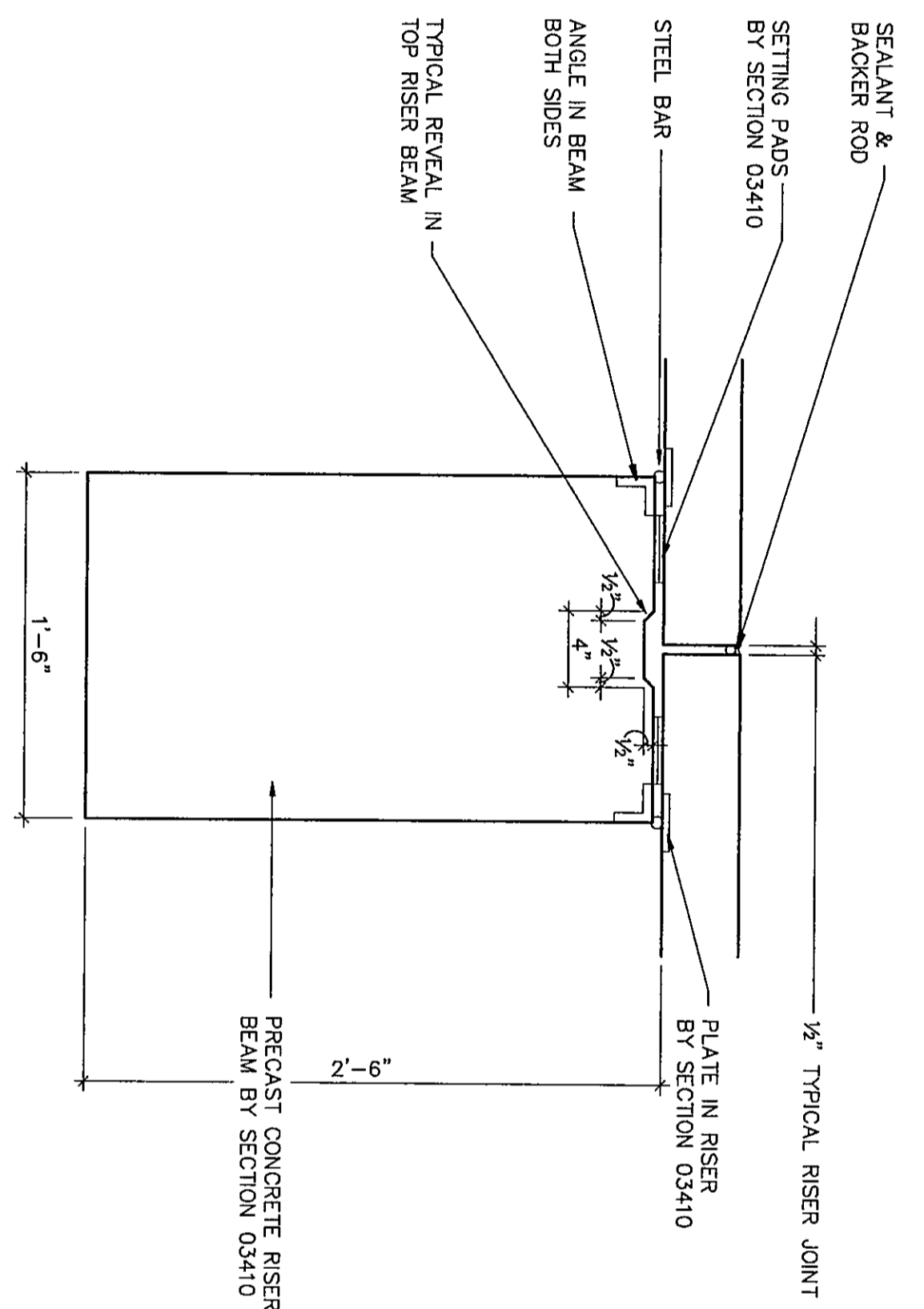
SECTION 3
1 1/2" = 1'-0"



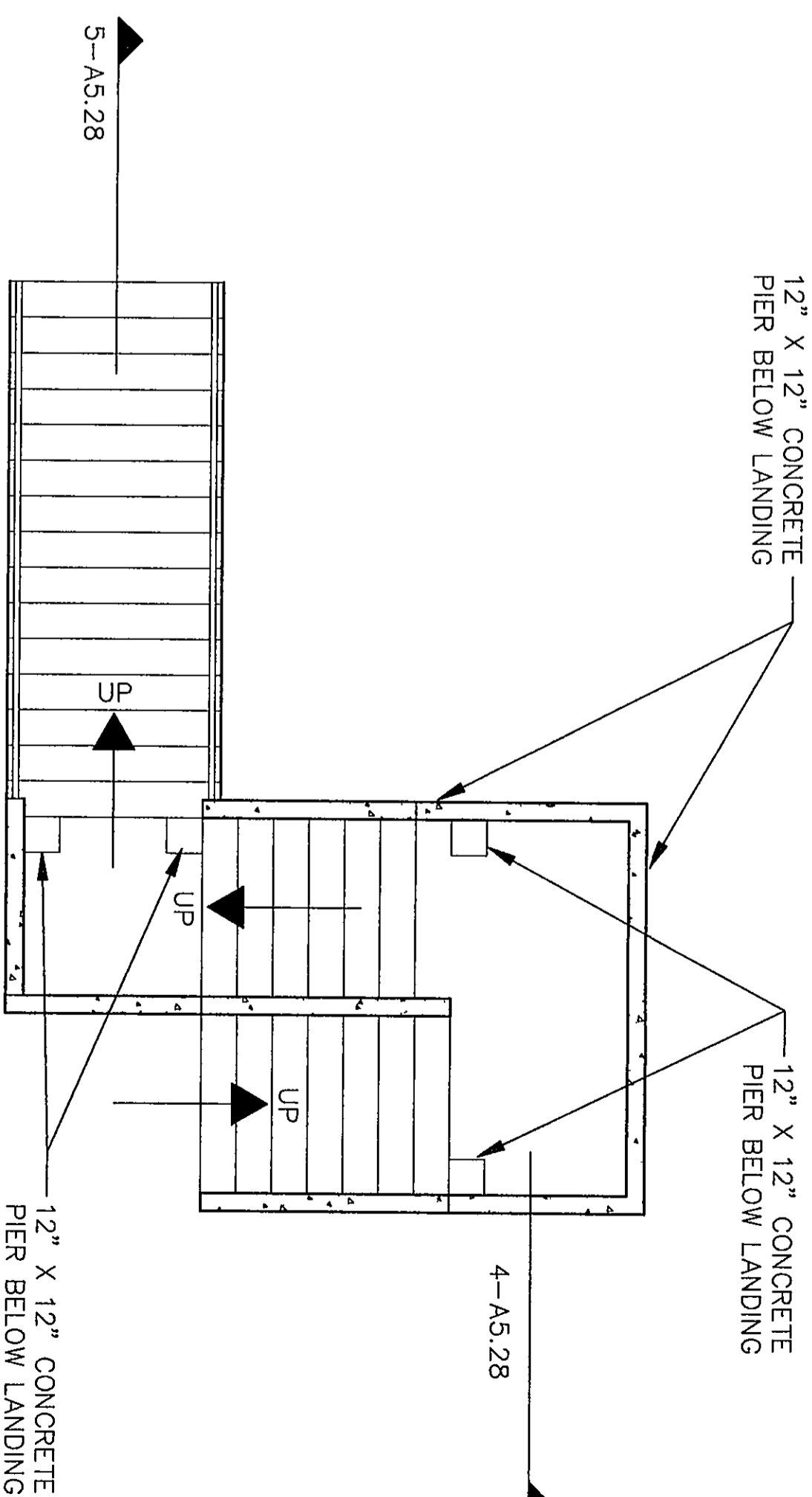
SECTION 4
1 1/2" = 1'-0"



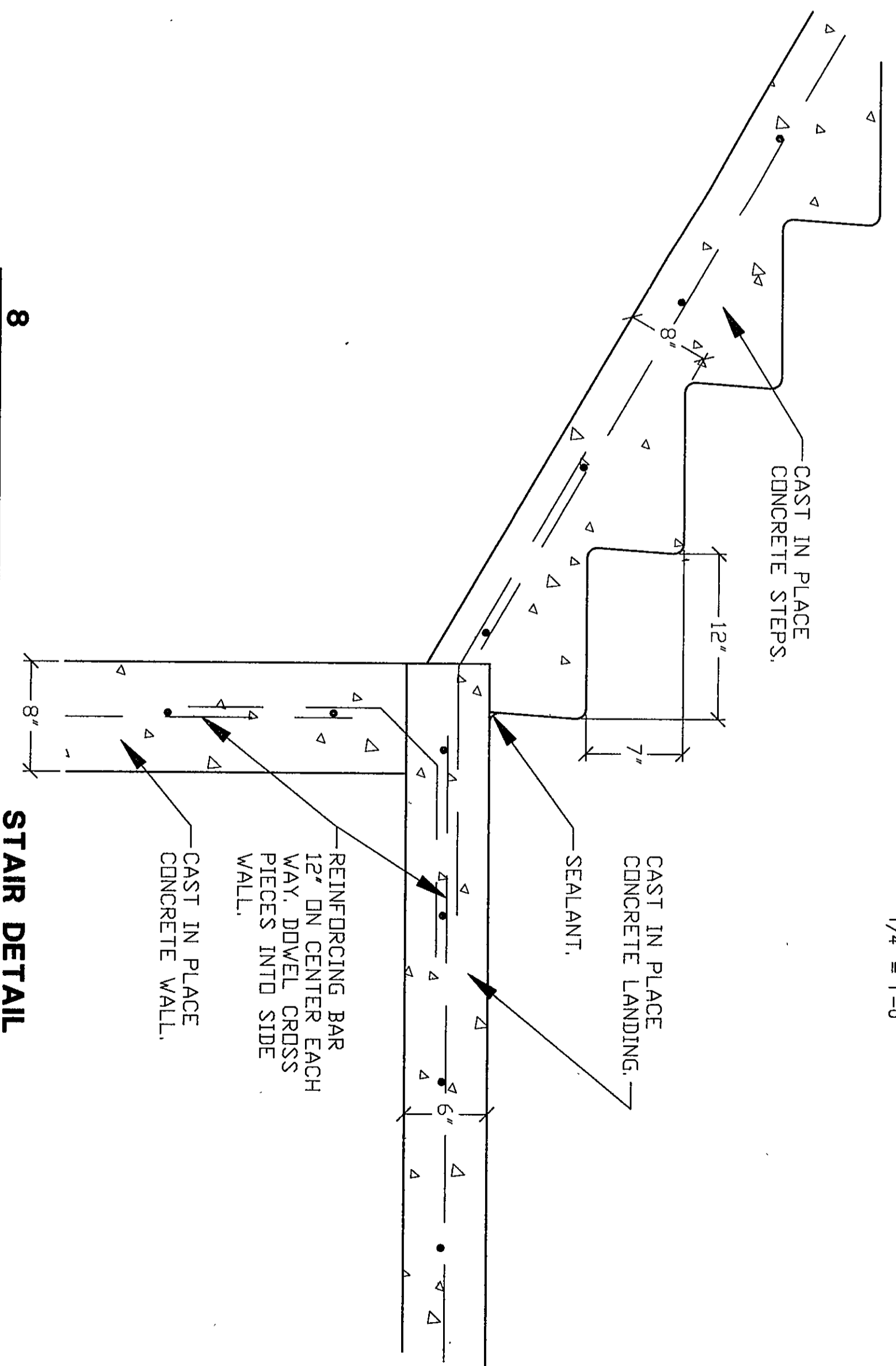
DETAIL 5
1 1/2" = 1'-0"



DETAIL 6
1 1/2" = 1'-0"

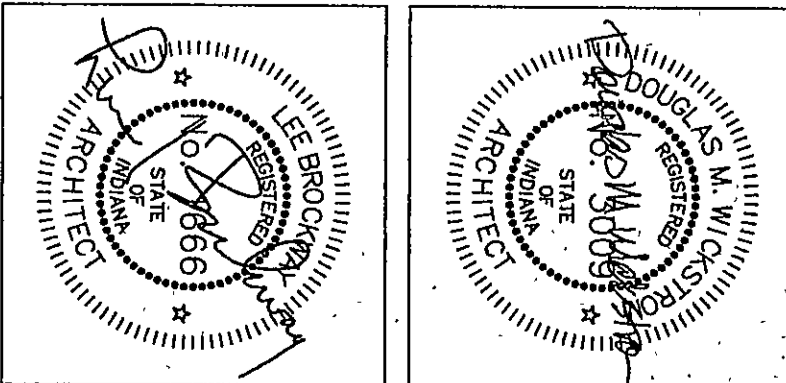


PLAN DETAIL 7
1/4" = 1'-0"



STAIR DETAIL 8
1-1/2" = 1'-0"

Copyright 1997 by Fanning/Howey Associates, Inc.



THE NEW
CHESTERTON HIGH SCHOOL
FOR THE
DUNELAND SCHOOL CORPORATION
CHESTERTON, INDIANA

Fanning/Howey Associates, Inc.
Architects Engineers Consultants

WALL SECTIONS

DRAWN BY: TOD COMM. NO.: 95067.00
CHECKED BY: LEC DATE: APRIL 21, 1997

A5.28

REVISIONS NO. DATE

CHESTERTON HIGH SCHOOL
95067.00

q1-k-100