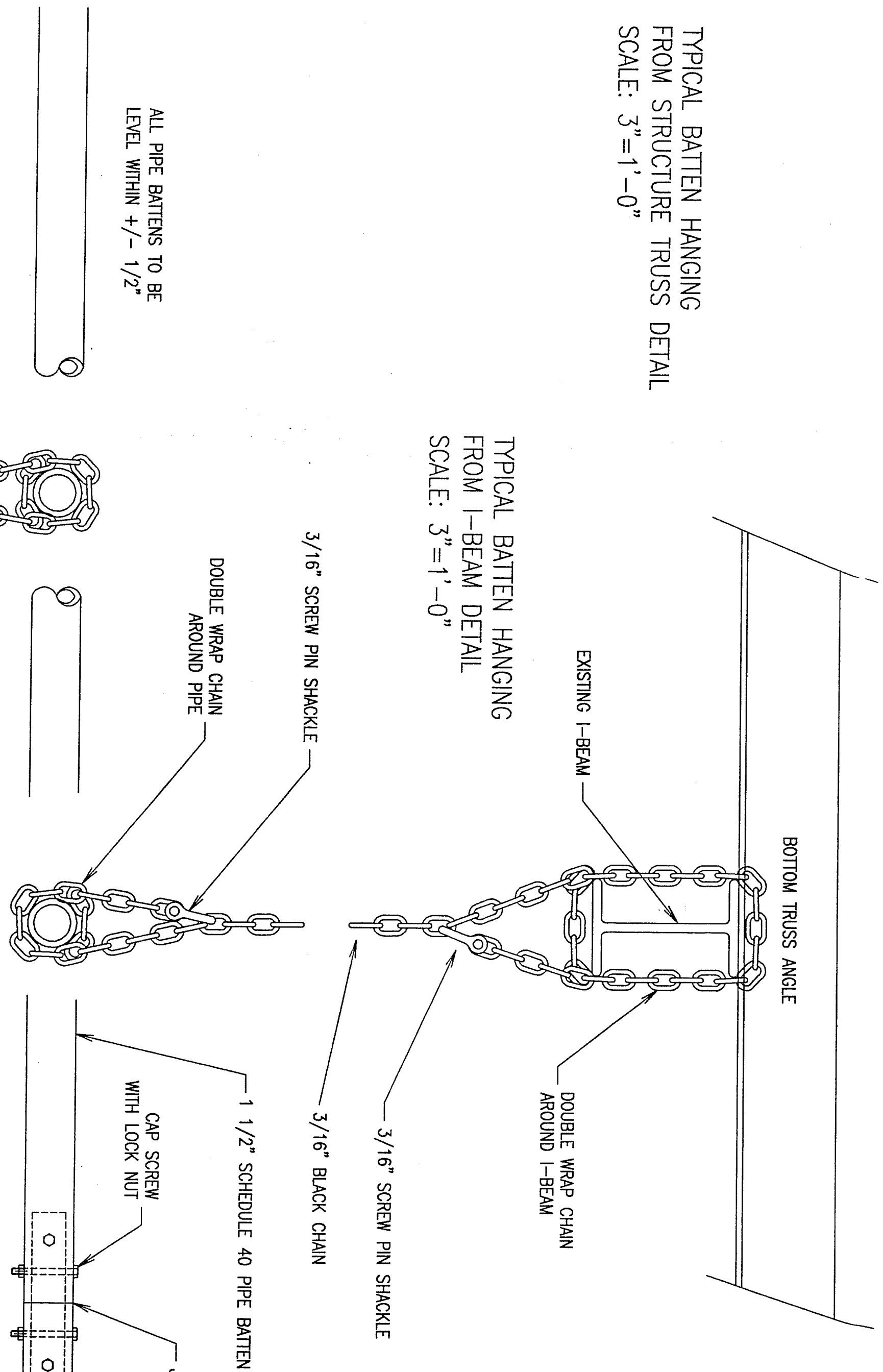
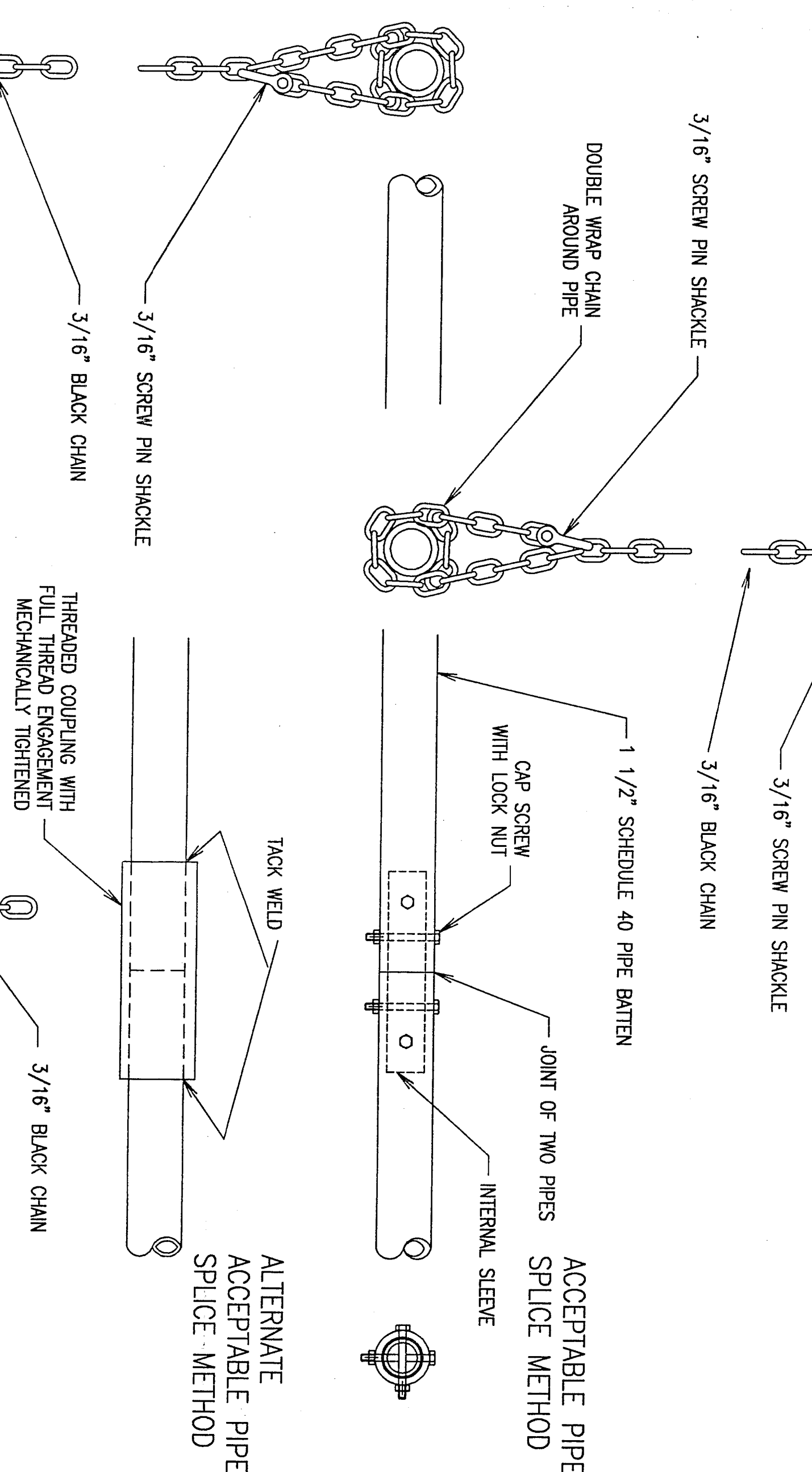


TYPICAL BATTEN HANGING
FROM STRUCTURE TRUSS DETAIL
SCALE: 3"=1'-0"

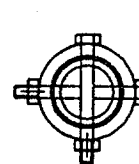


- NOTES:
1. ALL SUSPENSION HARDWARE TO BE SUPPLIED AND INSTALLED BY WENGER CORP.
 2. ALL MANUFACTURED SUSPENSION HARDWARE TO BE PAINTED BLACK. ALL STANDARD HARDWARE TO HAVE STANDARD MANUFACTURER'S FINISH.

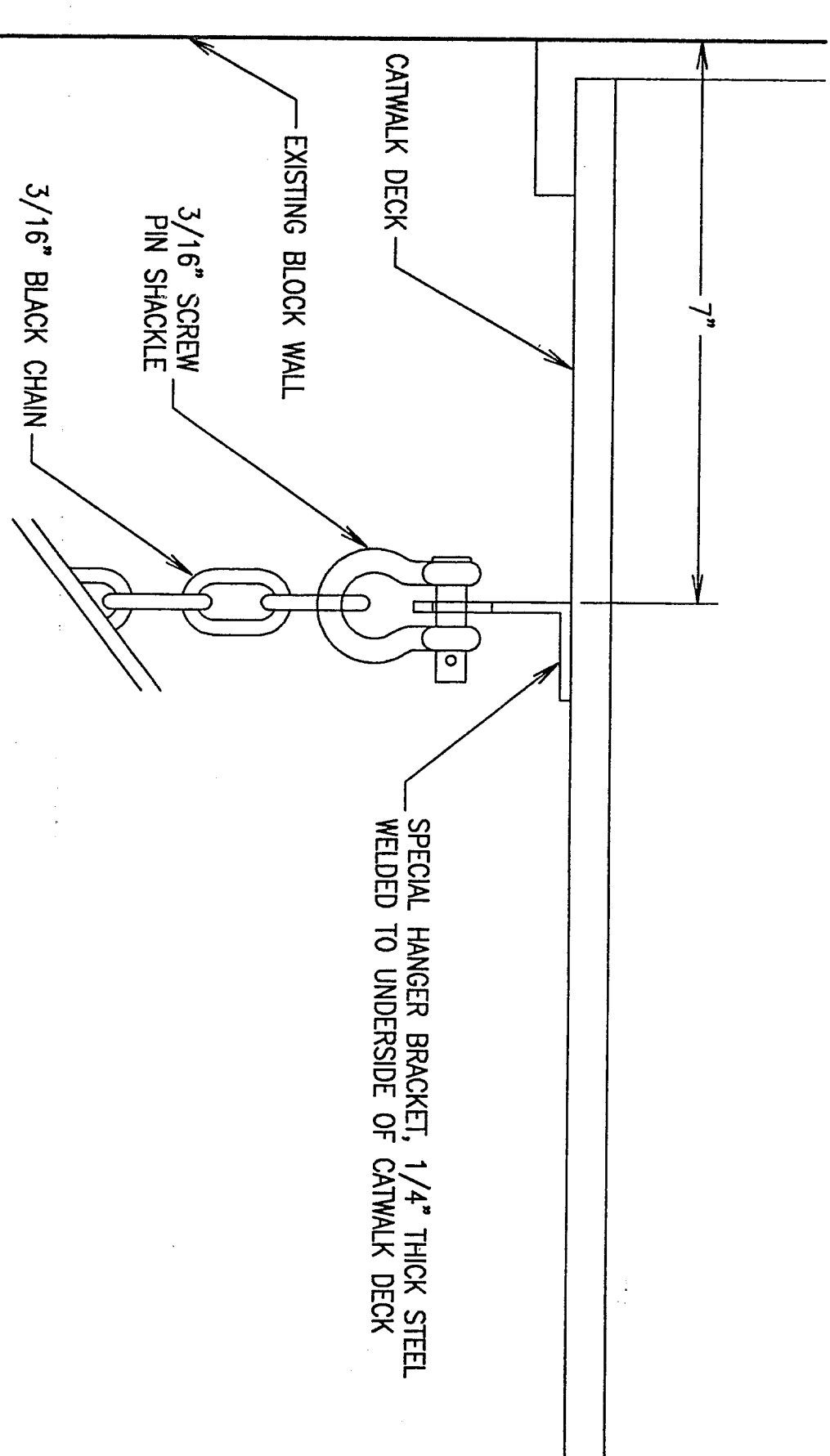
TYPICAL BATTEN HANGING
FROM I-BEAM DETAIL
SCALE: 3"=1'-0"



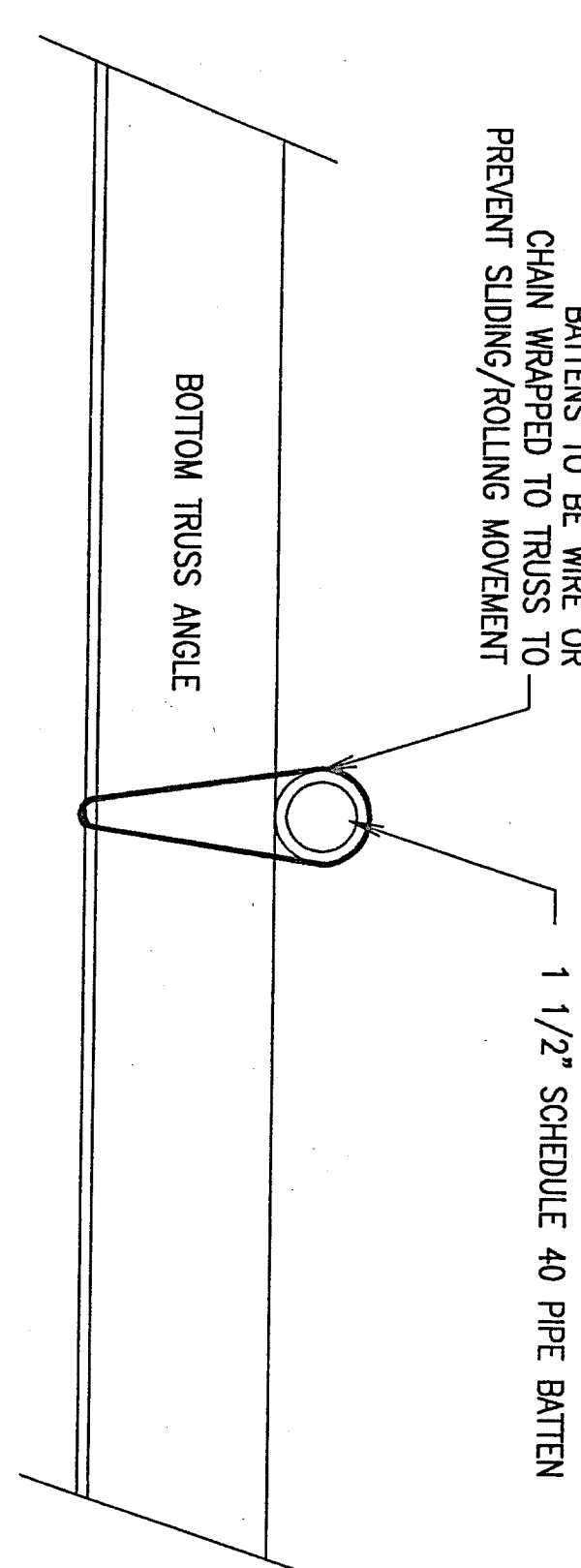
ALTERNATE
ACCEPTABLE PIPE
SPUCE METHOD



CATWALK HANGER DETAIL
SCALE: 6"=1'-0"

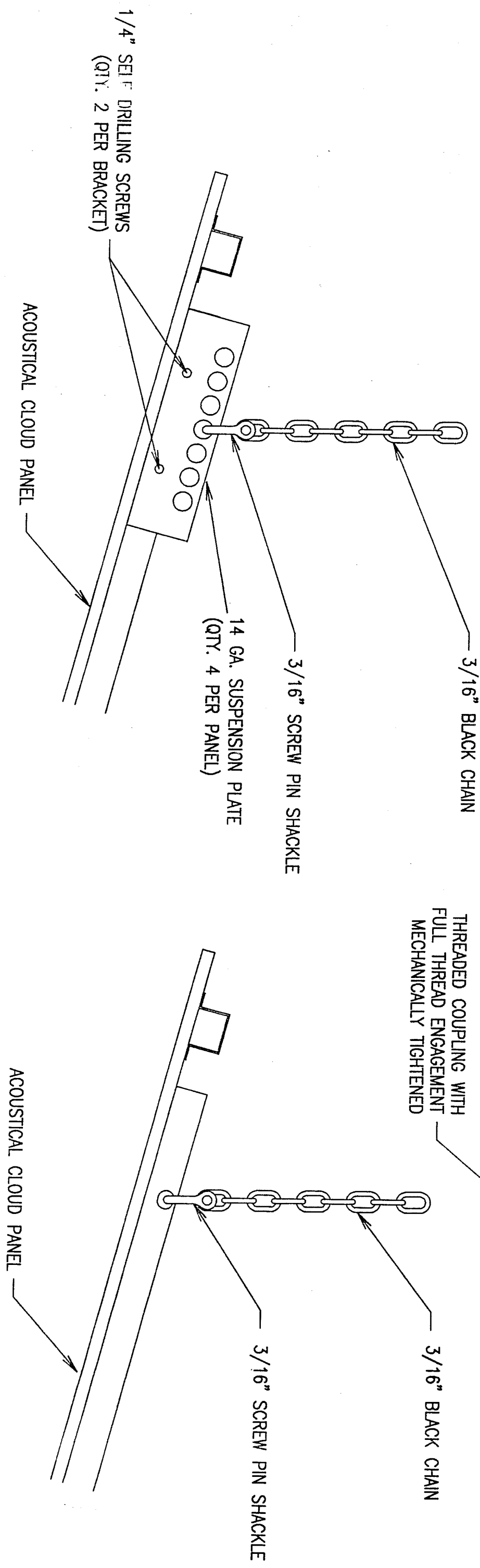


BATTENS TO BE WIRE OR
CHAIN WRAPPED TO TRUSS TO
PREVENT SLIDING/ROLLING MOVEMENT

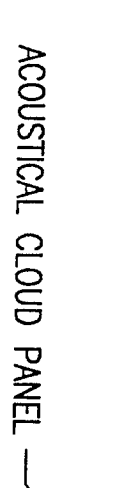


ADDITIONAL PIPE BATTENS (C,E,G)
ATTACHED TO ROOF STRUCTURE TRUSS
SCALE: 3"=1'-0"

ACOUSTICAL CLOUD PANEL
SUSPENSION DETAIL
USED ON ROW 3,
STAGE SIDE OF ROW 4,
AND 4'X4' PANELS OF ROW 7
SCALE: 3"=1'-0"



TYPICAL ACOUSTICAL CLOUD PANEL
SUSPENSION DETAIL
SCALE: 3"=1'-0"



REVISIONS

SEE SHEET 1

LEVEL 1

PREPARED FOR:

CHESTERTON HIGH SCHOOL NORTH
CHESTERTON, INDIANA

SIMILAR TO:

DATE: 12/01/97
DRAWN BY: J NEAL
CHECKED BY: MI

This drawing and specification
contains information
Proprietary. Any reproduction,
disclosure, or use thereof is
expressly prohibited without the
written permission of Wenger
Corporation.

SCALE: 3"=1'-0"
L.M. NO. A-1059-1D

OWATONNA, MN - TELEPHONE: 507-445-4100

DWG. NO. A-1059-1D

SHEET 4 OF 7

REV. 1