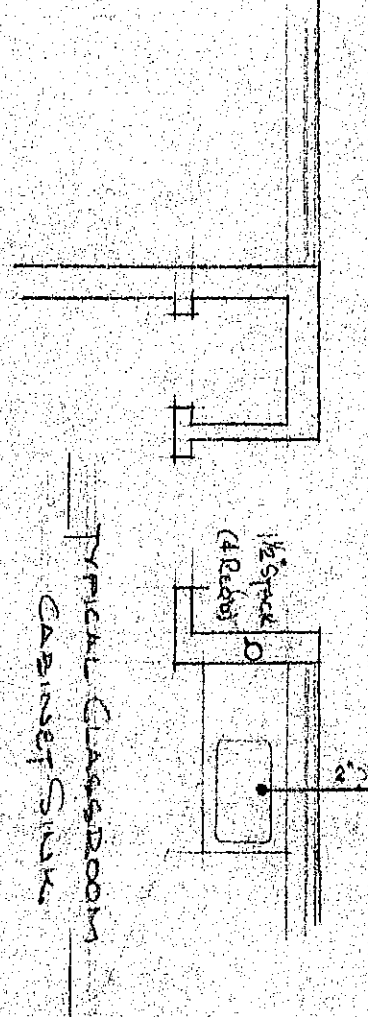
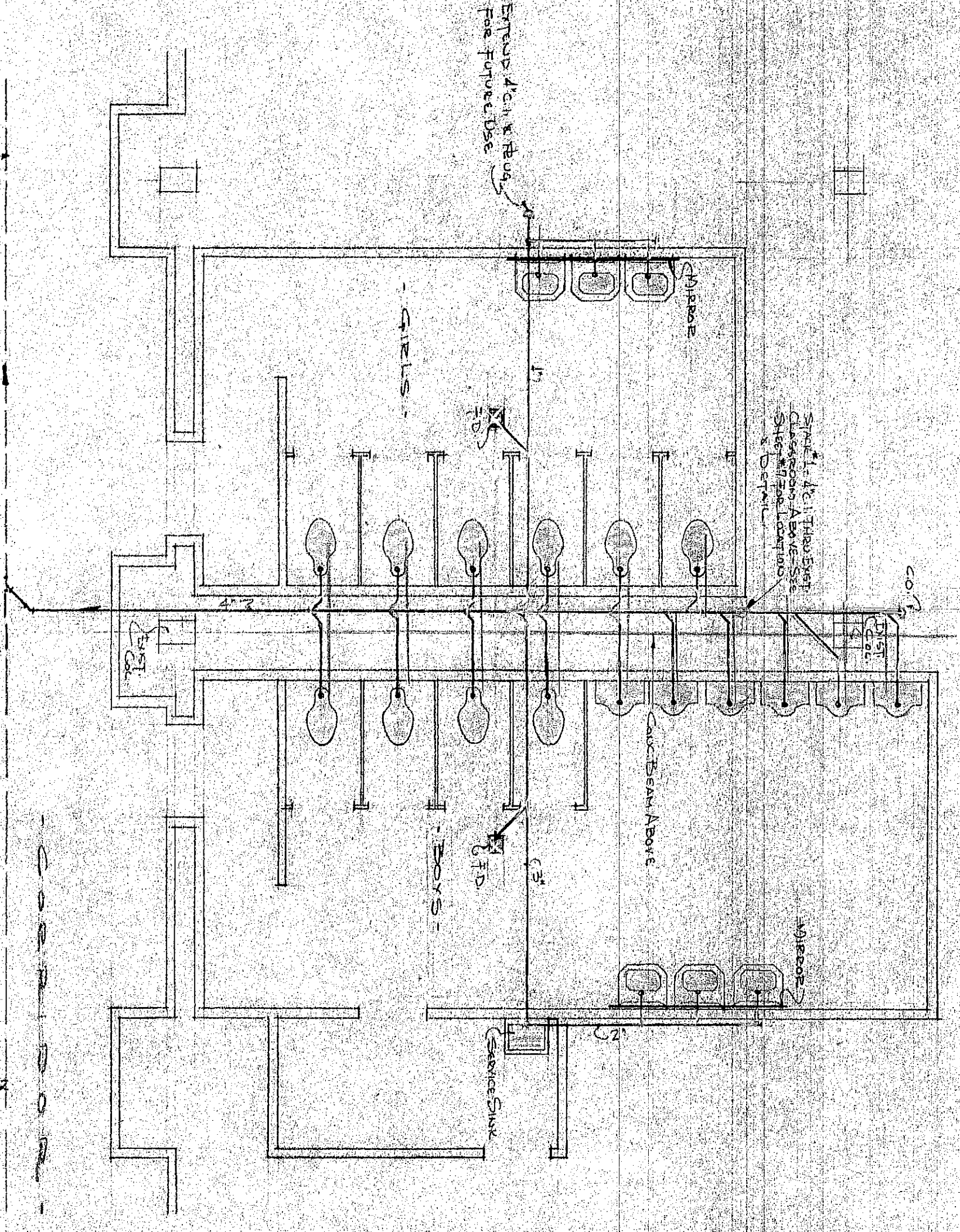
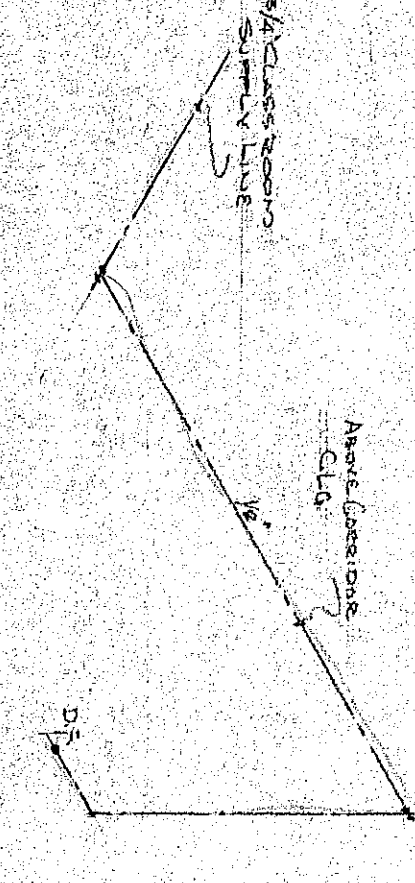


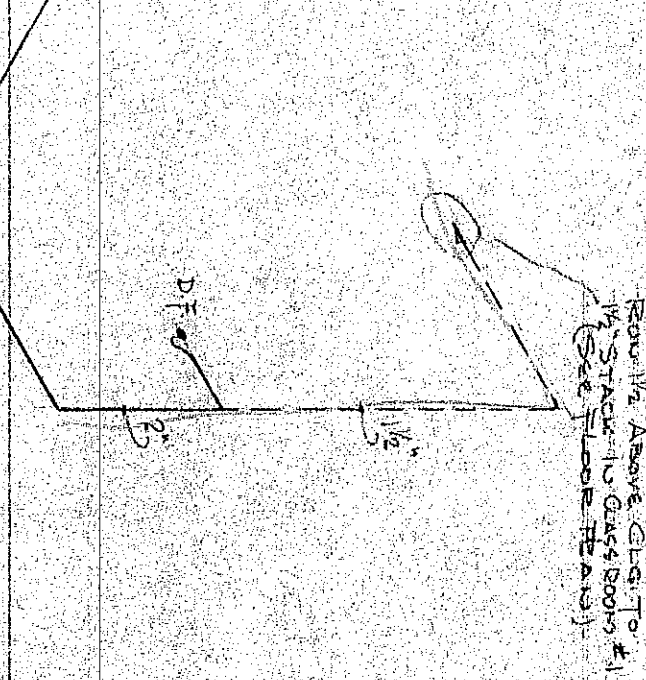
- FURNISHING FIXTURE SCHEDULE -		
QTY	ITEMS	SPECIFICATION
10	WATER CLOSETS ✓	AMERICAN STANDARD - GLASSO # 2891-9 OF EQUAL WALL HUNG. CARRIAGE FITTING WITH FOOT SUPPORT. SHOWN SET TO UNFLOATED DOWN COUNTELED FLUSH VALVE.
6	LAVATORIES ✓	AMERICAN STD - "PUMPE" # 3574 OF EQUAL TO 18" VITREOUS GLASS - SPURLOCK ADAPTOR FOR UP DOWN TO BE INSTALLED WITH STEEL CARRIAGES.
6	URINALS ✓	AMERICAN STD - WASHAL # 4055 OF EQUAL VITREOUS GLASS WASHOUT WITH ELEVATED SHIELD VALVE ONE EACH - VACUUM CARRIAGES. (THIS HAVING CONSTRUCTION GLASS - CHILD PROOF - WALL HUNGERS.
1	DRINKING FOUNTAIN	AMERICAN STD - ABDO # 27051 OF EQUAL
1	SERVICE SINK ✓	AMERICAN STD - ABDO # 27051 OF EQUAL
4	CAPTAIN SINKS ✓	AMERICAN STD - ABDO # 27051 OF EQUAL WITH TOWEL SHED, SINK SET SPACED, THIS WATER & FOOT # 2535 OF EQUAL. (SEE SPECIFICATIONS FOR SETTING DETAILS - SEE SPECIFICATIONS)
2	WASHBOARDS ✓	AMERICAN STD - ABDO # 27051 OF EQUAL
3	WASHBOARDS ✓	AMERICAN STD - ABDO # 27051 OF EQUAL
4	WASHBOARDS ✓	AMERICAN STD - ABDO # 27051 OF EQUAL
10	TOILET CARRIAGES	SEE DET SHEET # 3 - VITREOUS GLASS CARRIAGES



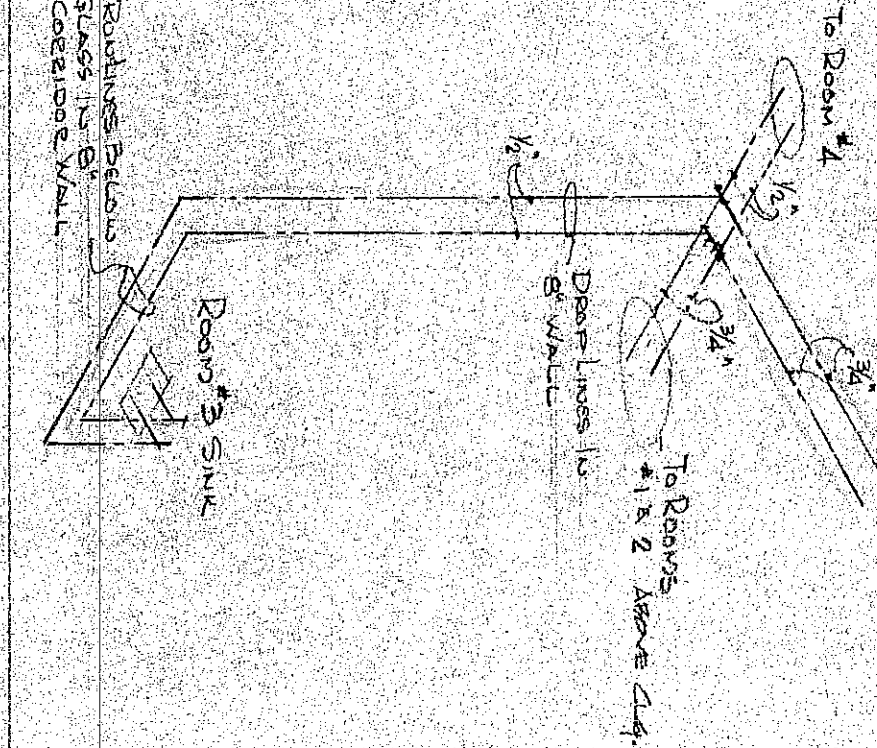
- PLAN - DRAIN LINES -
1/8" SCALE



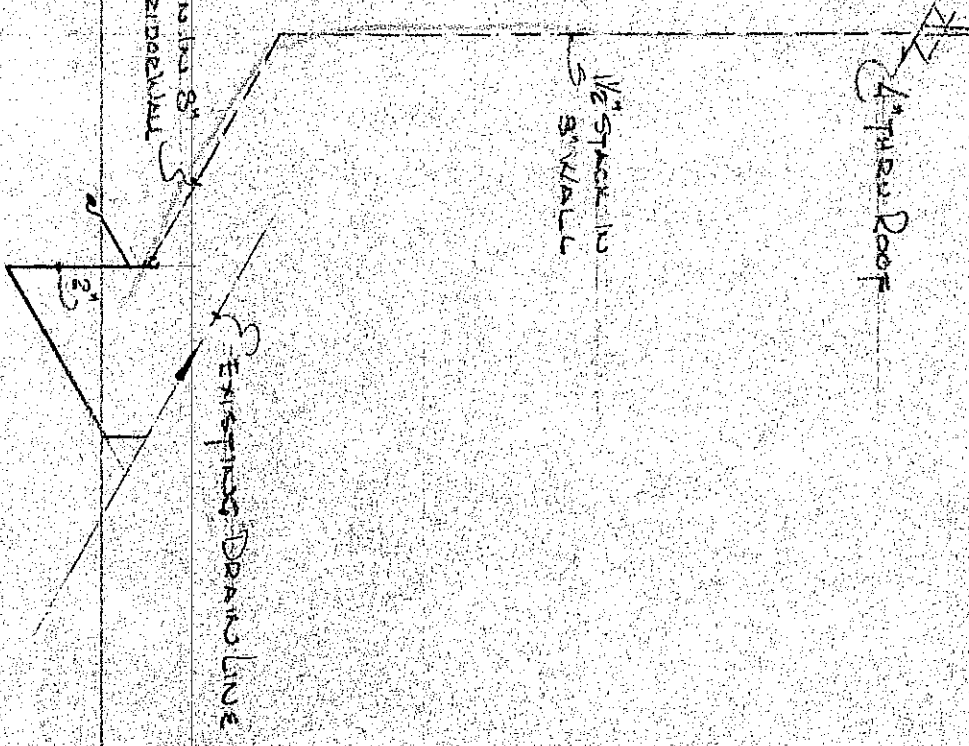
- DRINKING FOUNTAIN WATER LINE -
READ



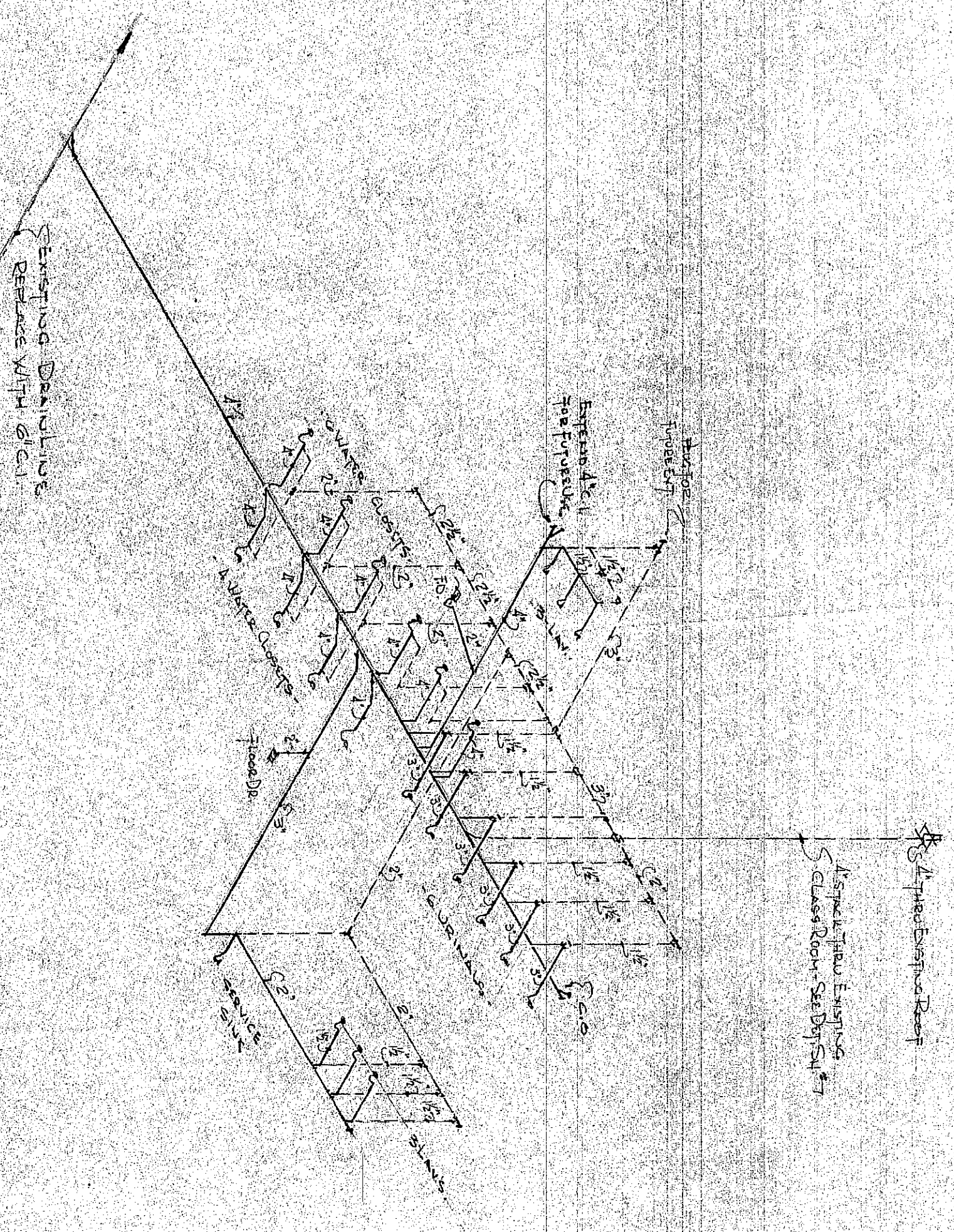
- DRINKING FOUNTAIN DRAIN -
READ



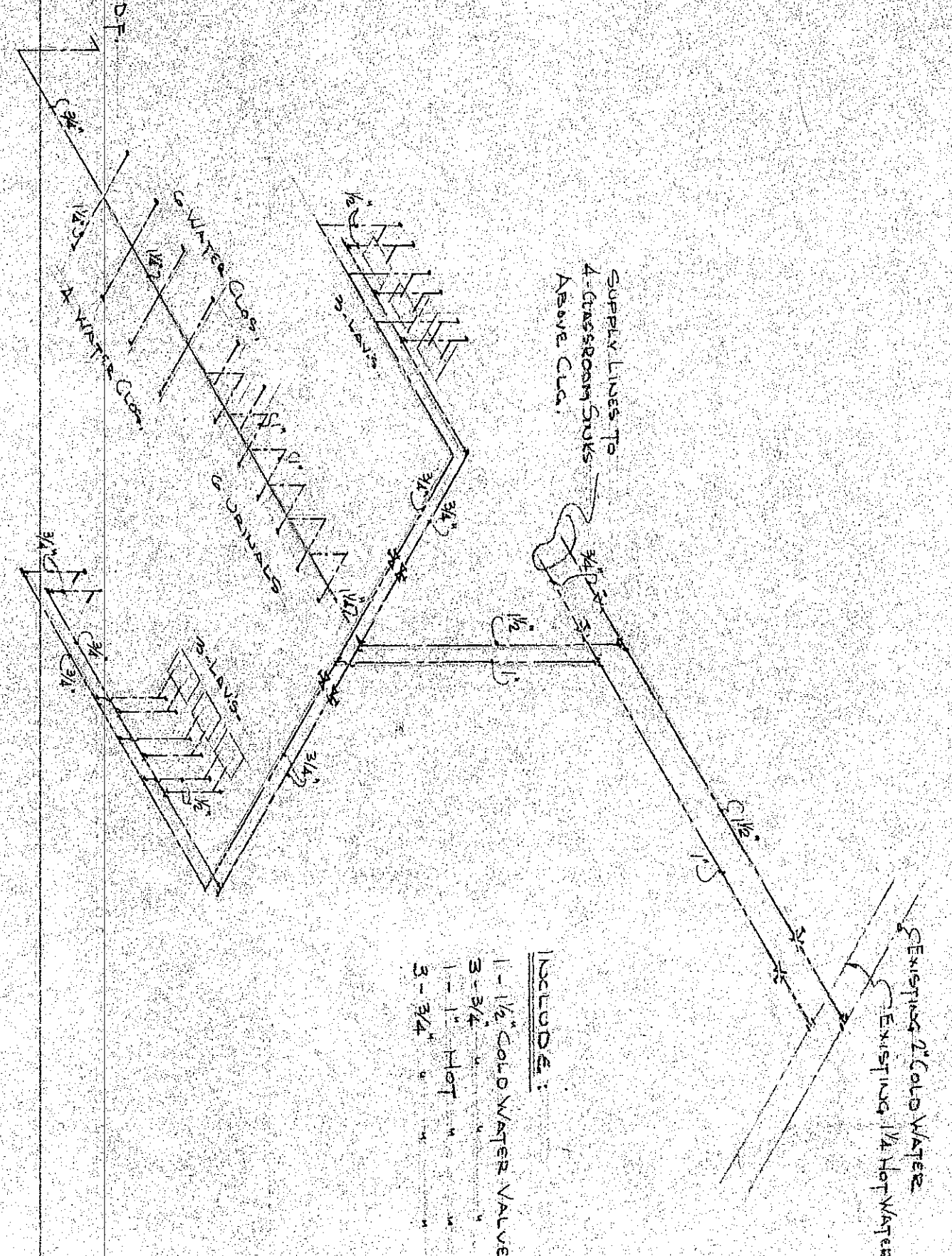
- CLASS ROOM WATER PIPING -
TYPICAL DIAGRAM



- TYPICAL CLASSROOM PIPING -
4\"/>



- DRAIN PIPING -
Boys' Restroom
Drain Lines
Vent Lines



- WATER PIPING -
Boys' Restroom
Water Lines
Hot Water

ENGINEERS

CHESTER L. STEMP

AND ASSOCIATES

CHESTER, IND.

ADDITION TO VOST SCHOOL

WESTCHESTER TOWNSHIP SCHOOL

13

OF

17

4-2-59