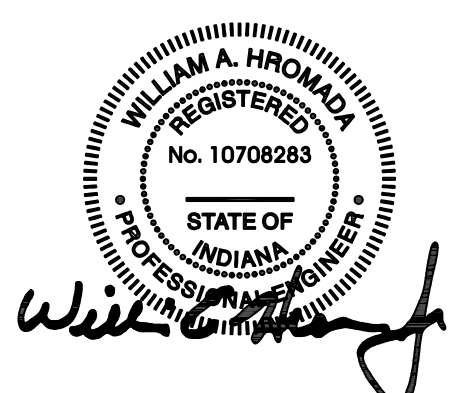
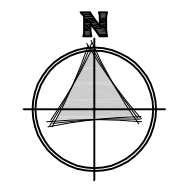
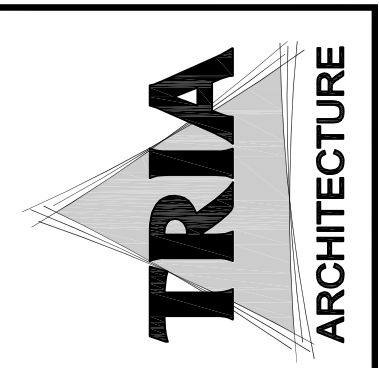
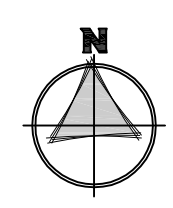
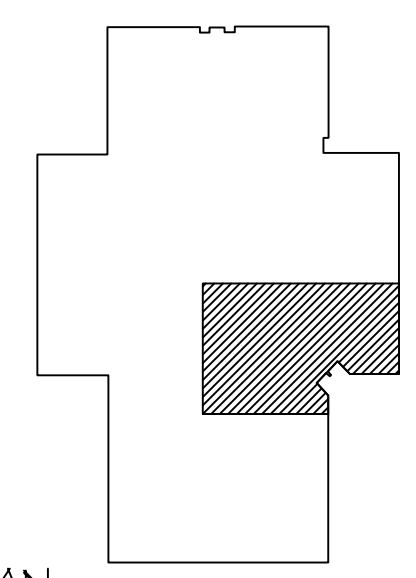


1 PLUMBING EXISTING PLAN
1/4" = 1'-0"



KEY PLAN
NOT TO SCALE

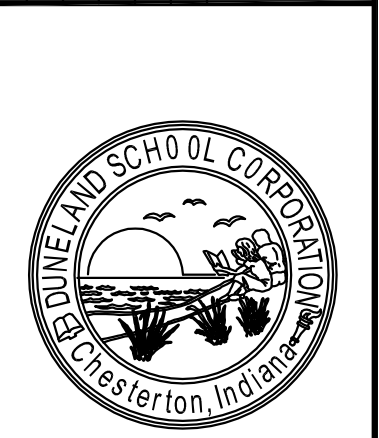


STRUCTURAL CONSULTANT:
Larson Engineering, Inc.
1500 N. 10th Street, Suite 100
Westfield, Indiana 46084-1000
(773) 234-1000
(773) 234-1001

MEP CONSULTANT:
Miles Engineering Group
1111 W. 10th Street, Suite 100
Westfield, Indiana 46084-1000
(773) 234-1000
(773) 234-1001

DUNELAND SCHOOL CORPORATION
2015
JACKSON ELEMENTARY SCHOOL RENOVATIONS
811 N. 400 E., VALPARAISO, IN 46383

| | |
|-----------------------------|-----------|
| PROJECT NUMBER: E-008 | REVISION: |
| PROJECT DATES: 5/05 | 1 |
| DRAWN BY: | 2 |
| ISSUED FOR BIDDING: 8/10/05 | 3 |
| PLUMBING EXISTING PLAN | 4 |



P101