

1 PARTIAL FIRST FLOOR FINISH PLAN
1/8" = 1'-0"

FLOOR FINISH PLAN GENERAL NOTES

1. REFER TO SPECIFICATIONS FOR ADDITIONAL INFORMATION.
2. MAKE EXISTING FLOOR SLAB SMOOTH AND FLAT TO FLOOR FINISH MANUFACTURER'S TOLERANCE WITH MATERIAL SUITABLE TO FLOOR FINISH MANUFACTURER PRIOR TO INSTALLATION.
3. ALL TRANSITIONS BETWEEN DISSIMILAR FLOORING MATERIALS ARE TO RECEIVE A NEW TRANSITION STRIP.
4. PROVIDE VINYL COVERED BASE AT AREAS OF RESILIENT FLOORING - PROVIDE VINYL STRAIGHT BASE AT CARPETED AREAS.
5. AT AREAS WHERE PATCHING OF WALL BASE IS REQUIRED - FINISH TO MATCH ADJACENT IN MATERIAL, COLOR, HEIGHT, FINISH AND PROFILE.
6. PAINT ALL EXPOSED SURFACES OF ALL WALL CONSTRUCTION (NEW AND EXISTING) IN WORK AREA - UNLESS NOTED OTHERWISE.
7. PAINT ALL GYPSUM BOARD CEILINGS AND SOFFITS - UNLESS NOTED OTHERWISE.
8. DO NOT PAINT PREFINISHED ITEMS, FACE BRICK, AND TILE FINISHES.
9. PROVIDE WALL BASE AT ALL LOCATIONS OF NEW FLOOR FINISH AND NEW WALL CONSTRUCTION - UNLESS NOTED OTHERWISE.
10. AT ALL DOORS AND FRAMES INSTALLED IN EXISTING OPENINGS - PATCH AND PAINT EXISTING ADJACENT SURFACES AFTER FRAME INSTALLATION - DO NOT PAINT PREFINISHED ITEMS - MATCH EXISTING COLOR, UNLESS NOTED OTHERWISE.

FLOOR FINISH PLAN REFERENCED NOTES

1. WALL CONSTRUCTION (NEW AND EXISTING).
2. COLUMN.
3. DOOR AND FRAME (NEW AND EXISTING).
4. WINDOW (NEW AND EXISTING).
5. CASEWORK.

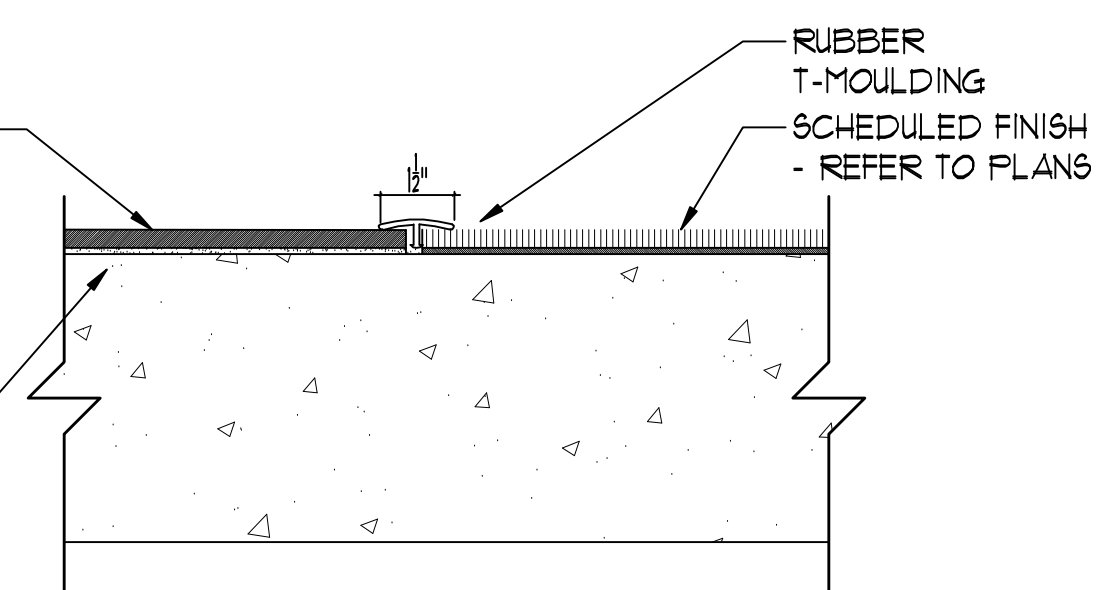
FLOOR FINISH LEGEND

- ETR (EXISTING TO REMAIN) - PROTECT EXISTING FLOORING DURING CONSTRUCTION - CONTRACTOR TO REPAIR ANY AFFECTED AREAS - MATCH ADJACENT FINISH IN MATERIAL, COLOR, TEXTURE AND SIZE
- 12"x12" VINYL COMPOSITE TILE (UP TO 2 COLORS) WITH VINYL BASE
- BROADLOOM CARPET WITH VINYL BASE (FIELD COLOR)
- CONCRETE - MATCH EXISTING ADJACENT IN TEXTURE, FINISH AND COLOR
- CPT CARPET - REFER TO SPECIFICATIONS
- T-1 TRANSITION STRIP - REFER TO DETAIL 2/A9.10

NOTE:
CONTRACTOR TO VERIFY CONDITIONS AT EACH TRANSITION AND SIZE REDUCERS ACCORDINGLY

SCHEDULED FINISH
-REFER TO PLANS

CONCRETE SLAB TO
BE PREPARED FOR
FLOOR FINISH PER
MANUFACTURER'S
RECOMMENDATIONS

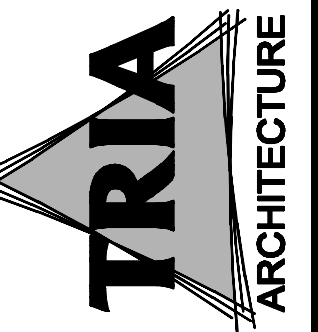
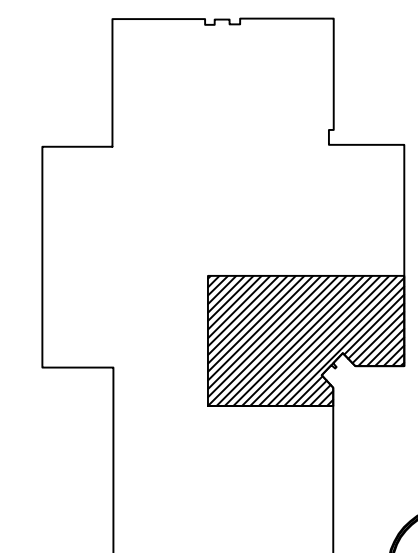


2 TRANSITION DETAIL
3" = 1'-0"

KEY PLAN
NOT TO SCALE



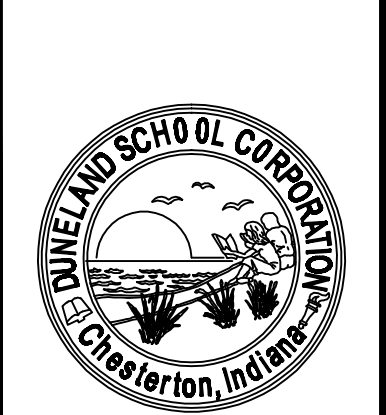
Expires 12/1/2015



STRUCTURAL CONSULTANT
Larson Engineering, Inc.
1600 N. 10th Street, Suite 100
Indianapolis, IN 46204
(317) 630-3400
(317) 630-3500
FAX (317) 630-3500
Miles Engineering Group
9711 INDIANAPOLIS BLVD
SUITE 100
INDIANAPOLIS, IN 46260
(317) 793-1600
(317) 793-1601
(317) 793-1602

DUNELAND SCHOOL CORPORATION
2015
JACKSON ELEMENTARY SCHOOL RENOVATIONS
811 N. 400 E., VALPARAISO, IN 46383

PROJECT NUMBER: E-008
PROJECT NAME: JACKSON
DRAWN BY: JTG
ISSUED FOR BIDDING: 04/10/2015
PARTIAL FIRST FLOOR FINISH PLAN



A9.10