

DUNELAND SCHOOL CORPORATION

2015 JACKSON ELEMENTARY SCHOOL RENOVATIONS

JACKSON ELEMENTARY SCHOOL 811 N. 400 E., VALPARAISO, IN 46383

TRIA PROJECT#: 15-008

GENERAL BUILDING CODE REQUIREMENTS

BUILDING CODES REFERENCED:

2012 INTERNATIONAL BUILDING CODE WITH 2014 INDIANA AMENDMENTS

2006 INTERNATIONAL PLUMBING CODE 2ND EDITION AMENDED INDIANA 2012

2008 NATIONAL ELECTRICAL CODE WITH INDIANA AMENDMENTS

2012 INTERNATIONAL MECHANICAL CODE WITH 2014 INDIANA AMENDMENTS

INDIANA ENERGY CONSERVATION CODE 2010

2012 INTERNATIONAL FIRE CODE WITH 2014 INDIANA AMENDMENTS

INDIANA SUPPLEMENTARY FIRE SAFETY RULES

2012 INTERNATIONAL FUEL GAS CODE WITH 2014 INDIANA AMENDMENTS

OCCUPANCY CLASSIFICATION:

EDUCATIONAL GROUP E

TYPE OF CONSTRUCTION:

III-B

DESIGN FIRM REGISTRATION:

THOMAS R. SZURGOT

INDIANA LICENSE NUMBER: *ARI0800173

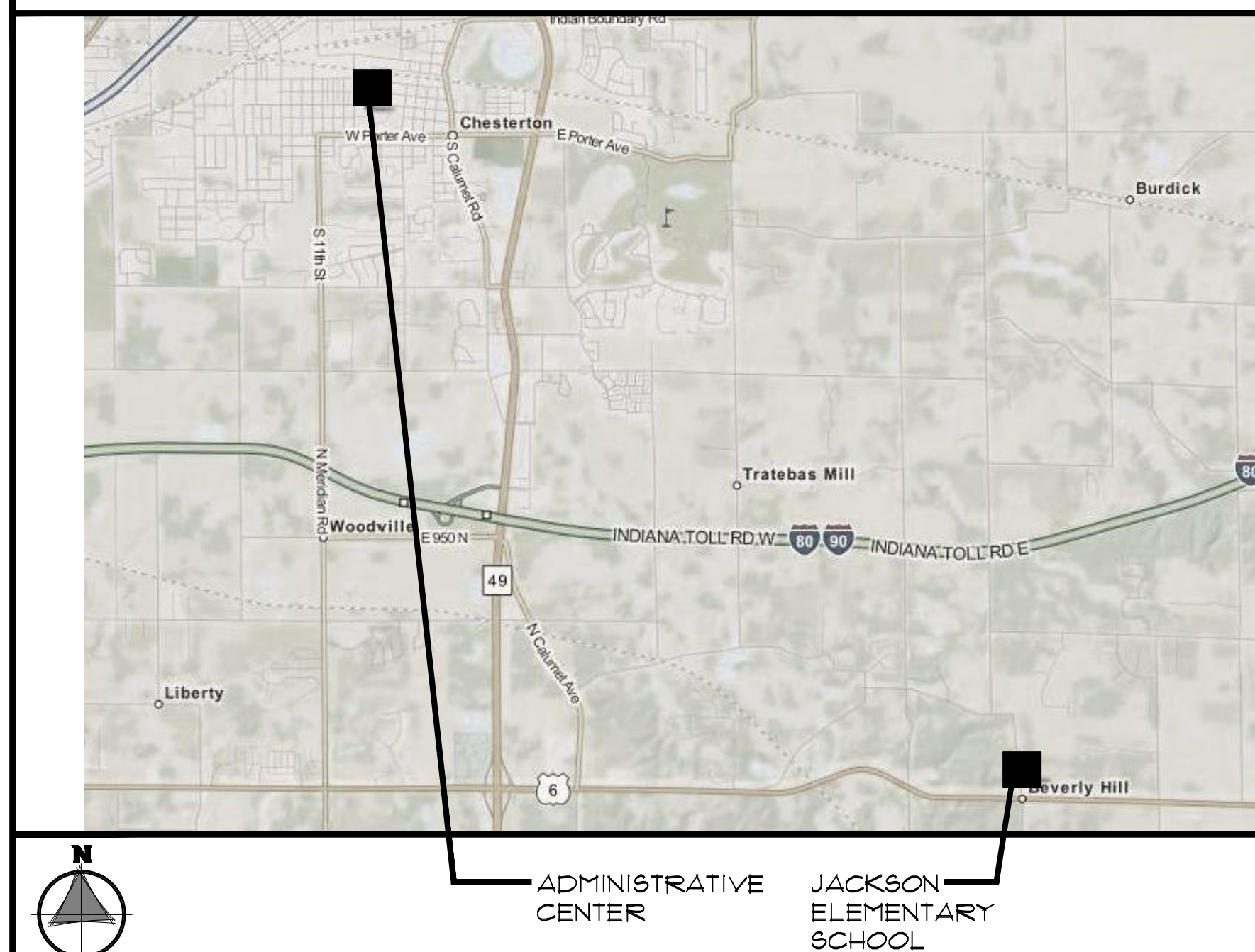
DRAWING INDEX

T1.00	TITLE SHEET, SITE LOCATION MAP, DRAWING INDEX, AND NOTES
A0.01	PARTIAL FIRST FLOOR REFERENCE PLAN
A0.10	PARTIAL EXISTING FIRST FLOOR PLAN
A1.10	PARTIAL FIRST FLOOR PLAN
A2.00	WALL TYPES, DOOR AND FRAME SCHEDULE, DOOR AND FRAME TYPES AND WINDOW TYPES
A2.10	FINISH SCHEDULE AND CASEWORK SCHEDULE
A6.00	DETAILS AND ENLARGED PLAN
A6.01	DETAILS
A7.10	PARTIAL REFLECTED CEILING PLAN
A9.10	PARTIAL FIRST FLOOR FINISH PLAN
M1.01	MECHANICAL - EXISTING PLAN
M2.01	MECHANICAL - FLOOR PLAN
M2.02	MECHANICAL - MEZZANINE PLANS
M3.01	MECHANICAL - SCHEDULES AND ABBREVIATIONS
M3.02	MECHANICAL - NOTES, DETAILS AND DIAGRAMS
P1.01	PLUMBING - EXISTING PLAN
P2.01	PLUMBING - FLOOR PLAN
P3.01	PLUMBING - SCHEDULES, DETAILS AND DIAGRAMS
FP2.01	FIRE PROTECTION - FLOOR PLAN
FP3.01	FIRE PROTECTION - SCHEDULES, DETAILS AND DIAGRAMS
E1.01	ELECTRICAL - EXISTING PLAN
E2.01	ELECTRICAL - NEW WORK PLAN
E3.01	ELECTRICAL - SCHEDULES, DETAILS AND DIAGRAMS
E4.01	ELECTRICAL - SYMBOL LIST

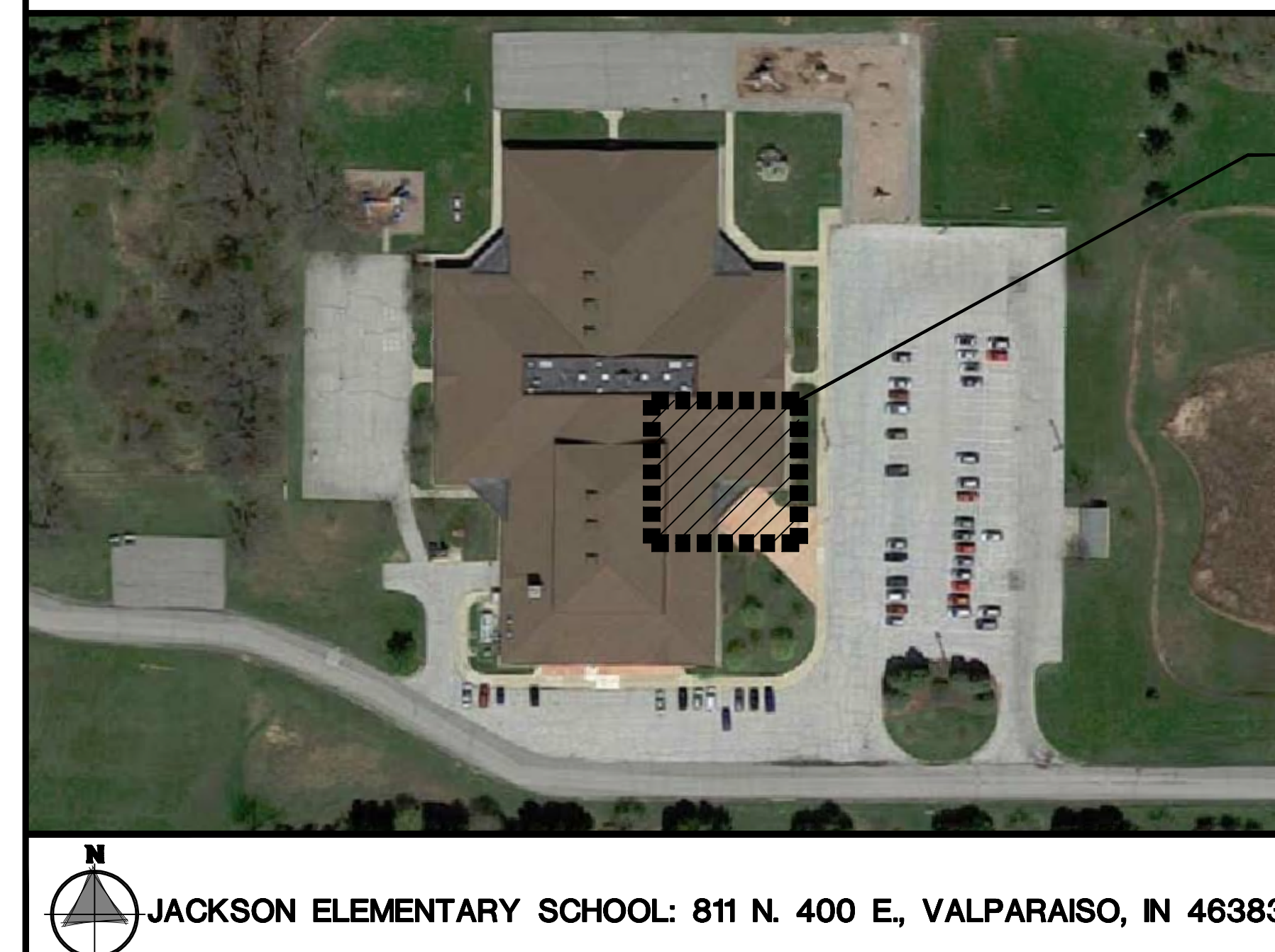
BOARD OF EDUCATION

PRESIDENT	MR. RALPH AYRES
VICE PRESIDENT	MRS. KRISTIN KROEGER
SECRETARY	MR. RONALD STONE
MEMBER	MR. MICHAEL TROUT
MEMBER	MR. JOHN MARSHALL
SUPERINTENDENT	MR. DAVID PRUIS

SITE LOCATION MAP



SITE PLAN



ARCHITECT:

TRIA ARCHITECTURE, INC.

West Suburban Office: 901 McClintock Drive, Suite 100
Burr Ridge, Illinois 60521

South Suburban Office: 1820 Ridge Road, Suite 209
Homewood, Illinois 60430

Phone: 630.455.4500 Fax: 630.455.4040
www.TriaArchitecture.com

STRUCTURAL CONSULTANT:

LARSON ENGINEERING, INC.

1488 Bond Street, Suite 100
Naperville, Illinois 60563

Phone: 630.357.0540 Fax: 630.357.0164
www.larsonengr.com

M.E.P. CONSULTANT:

MILLIES ENGINEERING GROUP

9711 Valparaiso Drive #A
Munster, Indiana 46321

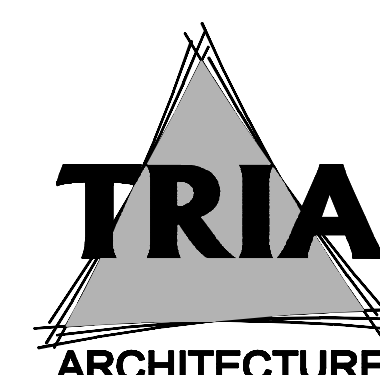
Phone: 219.924.8400 Fax: 219.924.5032
www.milliesengineeringgroup.com

ISSUED FOR BIDDING:

APRIL 20, 2015

TRIA ARCHITECTURE, INC. HEREBY EXPRESSLY
RESERVES ALL COPYRIGHT AND OTHER PROPERTY
RIGHTS PRESENT WITHIN THESE DOCUMENTS.
REPRODUCTION, SALE, OR ALTERATION OF THESE
DOCUMENTS IN WHOLE, OR A PORTION THERE OF,
SHALL BE PROHIBITED WITHOUT PRIOR WRITTEN
CONSENT OF TRIA ARCHITECTURE, INC.

COPYRIGHT 2015 TRIA ARCHITECTURE, INC.



REVISIONS:

T1.00